

ABN

THE ANCIENT MONUMENTS AND
ARCHAEOLOGICAL AREAS ACT 1979

Entry in the Schedule of Monuments

1999

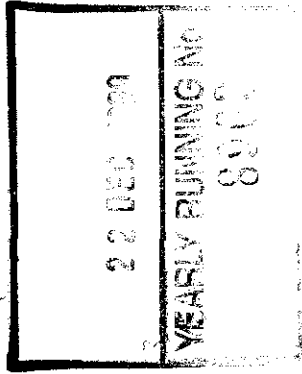
Re: The Monument known as
Knockargety Wood, unfinished hillfort
200m to 370m N of Upper Ruthven

in the Parish of Logie-Coldstone and
County of Aberdeen

Search Sheet No: 17754

Office of the Solicitor
to the
Scottish Executive
Victoria Quay
Edinburgh

MFA08085

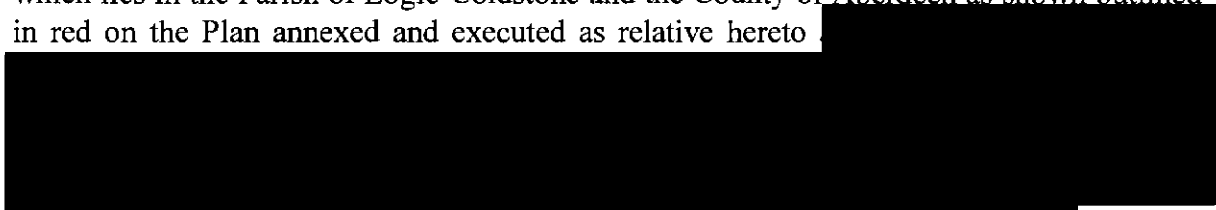


17754

29

THE ANCIENT MONUMENTS AND ARCHAEOLOGICAL AREAS ACT 1979
ENTRY IN THE SCHEDULE OF MONUMENTS

The monument known as Knockargety Wood, unfinished hillfort 200m to 370m N of Upper Ruthven comprises the remains of a slight earthwork, possibly an unfinished hillfort, situated on top of a ridge. The area to be scheduled measures 300m E-W by 180m N-S, to include the remains of the enclosure and an area around in which traces of activities associated with the construction of the enclosure are likely to survive. The monument, which lies in the Parish of Logie-Coldstone and the County of Aberdeen as shown outlined in red on the Plan annexed and executed as relative hereto


 is hereby included in the Schedule of Monuments appearing to the Scottish Ministers to be of national importance compiled and maintained by them under section 1(1) of the Ancient Monuments and Archaeological Areas Act 1979.

Subscribed by Frank James Lawrie, Director of Heritage Policy with Historic Scotland, being an officer of the Scottish Ministers at Edinburgh on the *8th* day of *November* Nineteen hundred and ninety-nine, before this witness Lesley Macdonald, of Longmore House, Salisbury Place, Edinburgh.

 Witness

 Director of Heritage Policy

Register on behalf of the Scottish Ministers in the Register of the County of Aberdeen.


Solicitor, Edinburgh, Agent

MFA08185

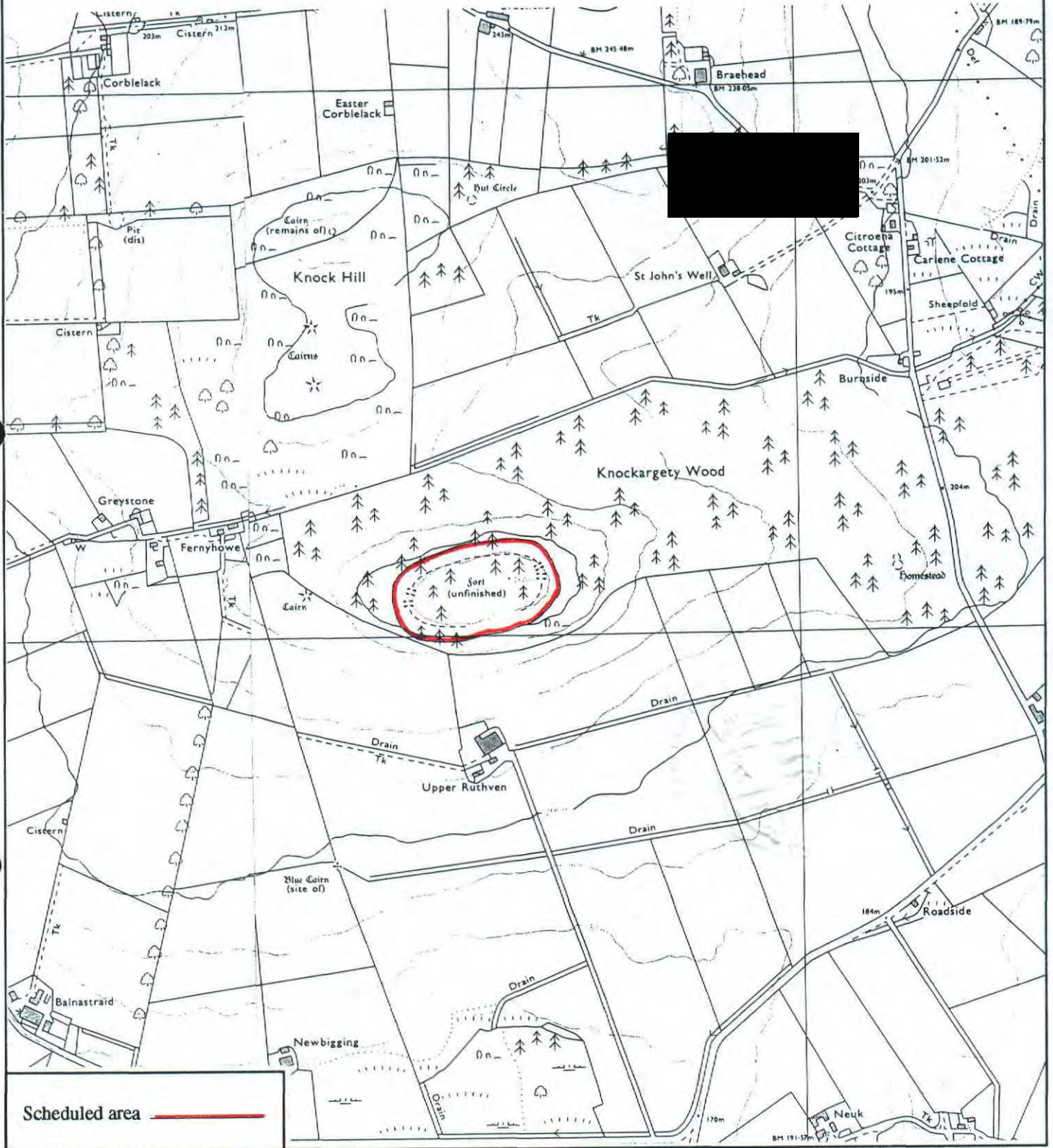
11 REGISTERS OF SCOTLAND
GENERAL REGISTER OF SASINES
COUNTY OF ABERDEEN
FICHE 433 FRAME 3
PRESENTED AND RECORDED ON

22 DEC 1999

ABN 99 4 3 3

3

This is the plan referred to in the entry in the Schedule affecting Knockargety Wood, unfinished hillfort 200m to 370m N of Upper Ruthven, dated 8 November 1999 and is signed as relative thereto.



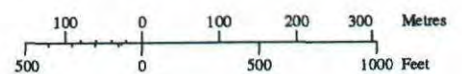
Knockargety Wood, unfinished hillfort 200m to 370m N of Upper Ruthven

Logie-Coldstone Parish



Sheet: NJ40SE

Scale 1:10,000



© Crown copyright reserved