

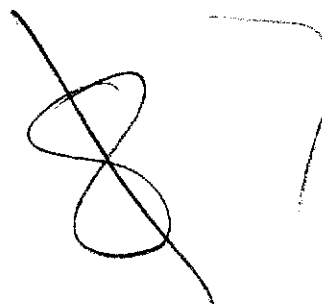
ANK

9607 382
1996

18 JAN 2000	SEARCHING No.
	208

THE ANCIENT MONUMENTS AND
ARCHAEOLOGICAL AREAS ACT 1979

Entry in the Schedule of Monuments



1999

Re: The Monument known as
Balhall Lodge, hut circle and field system
1100m NNE of


in the Parish of Menmuir and
County of Angus


Search Sheet No: 9607

Office of the Solicitor
to the
Scottish Executive
Victoria Quay
Edinburgh

MFA09285

THE ANCIENT MONUMENTS AND ARCHAEOLOGICAL AREAS ACT 1979
ENTRY IN THE SCHEDULE OF MONUMENTS


The monument known as Balhall Lodge, hut circle and field system 1100m NNE of, comprises a hut circle and field system of prehistoric date, visible as turf-covered wall footings and a series of low banks and cairns. The area to be scheduled comprises the remains described and an area around them within which related material may be expected to be found. It is irregular with maximum dimensions of 150m from its easternmost point to its westernmost point and 190m from its northernmost point to its southernmost point. The monument, which lies in the Parish of Menmuir and the County of Angus as shown outlined in red on the Plan annexed and executed as relative hereto 

 is hereby included in the Schedule of Monuments appearing to the Scottish Ministers to be of national importance compiled and maintained by them under section 1(1) of the Ancient Monuments and Archaeological Areas Act 1979.

Subscribed by Frank James Lawrie, Director of Heritage Policy with Historic Scotland, being an officer of the Scottish Ministers at Edinburgh on the 3rd day of November Nineteen hundred and ninety-nine, before this witness Lesley Macdonald, of Longmore House, Salisbury Place, Edinburgh.

 Director of Heritage Policy

Register on behalf of the Scottish Ministers in the Register of the County of Angus.


Solicitor, Edinburgh, Agent

MFA09485

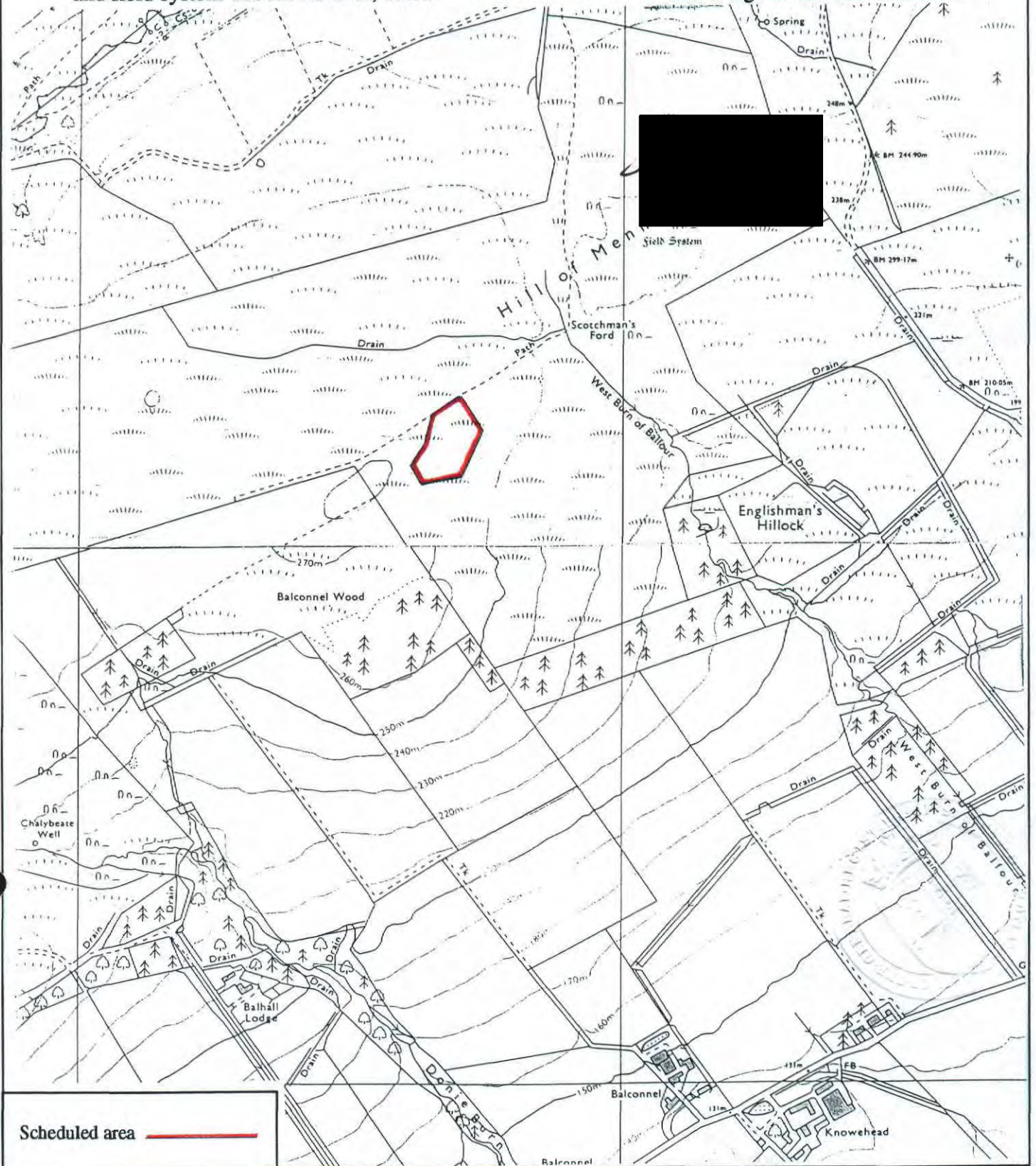
REGISTERS OF SCOTLAND
GENERAL REGISTER OF SASINES
COUNTY OF ANGUS
FICHE 7 FRAME 48
PRESENTED AND RECORDED ON

ANG00

7

18 JAN 2000

This is the plan referred to in the entry in the Schedule affecting Balhall Lodge, hut circle and field system 1100m NNE of, dated 3 November 1999 and is signed as relative thereto.



Scheduled area ———

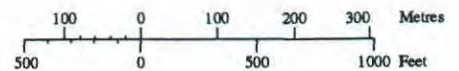
Balhall Lodge, hut circle and field system 1100m NNE of

Menmuir Parish



Sheet: NO56NW

Scale 1:10,000



© Crown copyright reserved