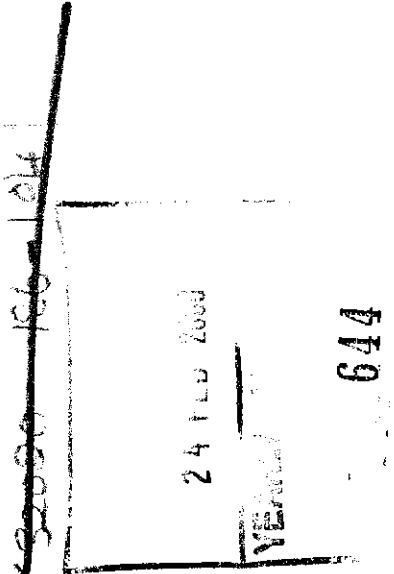


Am

THE ANCIENT MONUMENTS AND
ARCHAEOLOGICAL AREAS ACT 1979



Entry in the Schedule of Monuments

1999

7/6

Re: The Monument known as
Glendoick, souterrains 670m WSW of

in the Parish of Kinfauns and
County of Perth

Search Sheet No: 59205

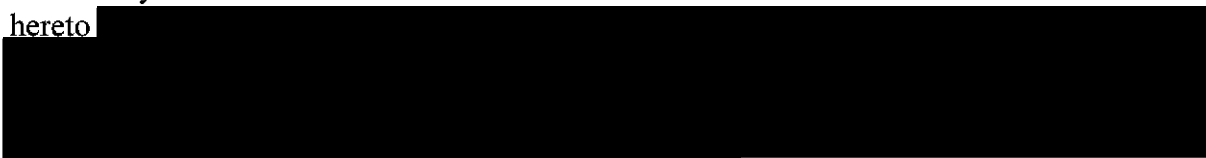
302525997401

Office of the Solicitor
to the
Scottish Executive
Victoria Quay
Edinburgh

MFA02805

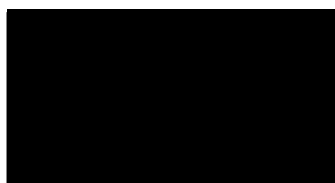
THE ANCIENT MONUMENTS AND ARCHAEOLOGICAL AREAS ACT 1979
ENTRY IN THE SCHEDULE OF MONUMENTS

The monument known as Glendoick, souterrains 670m WSW of comprises two souterrains and associated features of prehistoric date, visible as cropmarks on oblique aerial photographs. The area to be scheduled comprises the remains described and an area around them within which related material may be expected to be found. It is an irregular quadrilateral, aligned approximately NE-SW, with sides measuring 85m (SW), 125m (NW), 70m (NE) and 145m (SE). The monument, which lies in the Parish of Kinfauns and the County of Perth as shown outlined in red on the Plan annexed and executed as relative hereto

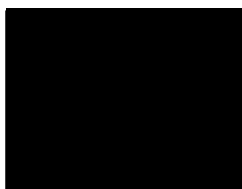


is hereby included in the Schedule of Monuments appearing to the Scottish Ministers to be of national importance compiled and maintained by them under section 1(1) of the Ancient Monuments and Archaeological Areas Act 1979.

Subscribed by Frank James Lawrie, Director of Heritage Policy with Historic Scotland, being an officer of the Scottish Ministers at Edinburgh on the 15th day of November Nineteen hundred and ninety-nine, before this witness Lesley Macdonald, of Longmore House, Salisbury Place, Edinburgh.



Witness



Director of Heritage Policy

Register on behalf of the Scottish Ministers in the Register of the County of Perth.



Solicitor, Edinburgh, Agent

MFA02905

CL
REGISTERS OF SCOTLAND
GENERAL REGISTER OF SASINES
COUNTY OF PERTH
FICHE 33 FRAME 16
PRESENTED AND RECORDED ON 24 FEB 2000

16

