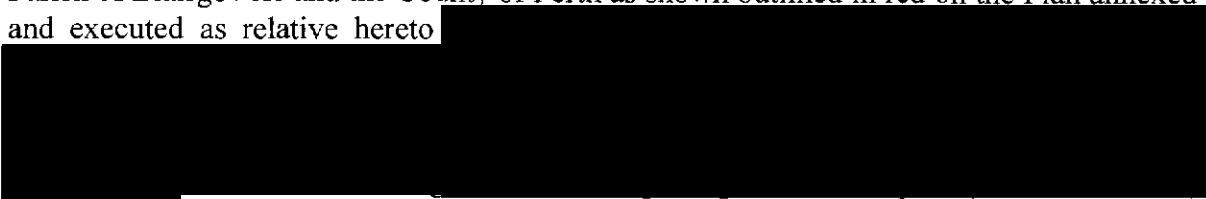


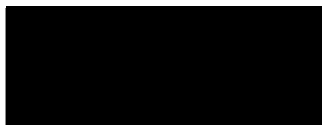
THE ANCIENT MONUMENTS AND ARCHAEOLOGICAL AREAS ACT 1979
ENTRY IN THE SCHEDULE OF MONUMENTS

The monument known as Myreside, ring-ditch and pit-alignment 440m S of comprises a ring-ditch house and pit-alignment of prehistoric date, visible as cropmarks on oblique aerial photographs. The area to be scheduled comprises the remains described and an area around them within which related material may be expected to be found. It is rectangular, measuring 110m along its long axis, by 40m transversely. The monument, which lies in the Parish of Blairgowrie and the County of Perth as shown outlined in red on the Plan annexed and executed as relative hereto

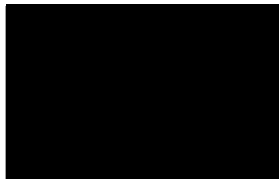


is hereby included in the Schedule of Monuments appearing to the Scottish Ministers to be of national importance compiled and maintained by them under section 1(1) of the Ancient Monuments and Archaeological Areas Act 1979.

Subscribed by Frank James Lawrie, Director of Heritage Policy with Historic Scotland, being an officer of the Scottish Ministers at Edinburgh on the 17th day of February Two thousand and one, before this witness Lesley Macdonald, of Longmore House, Salisbury Place, Edinburgh.



Witness



Director of Heritage Policy

Register on behalf of the Scottish Ministers in the Register of the County of Perth.



An Officer of the Scottish Ministers

MFA00388

REGISTERS OF SCOTLAND
GENERAL REGISTER OF SASINES
COUNTY OF PERTH
FICHE 54 FRAME 12
PRESENTED AND RECORDED ON

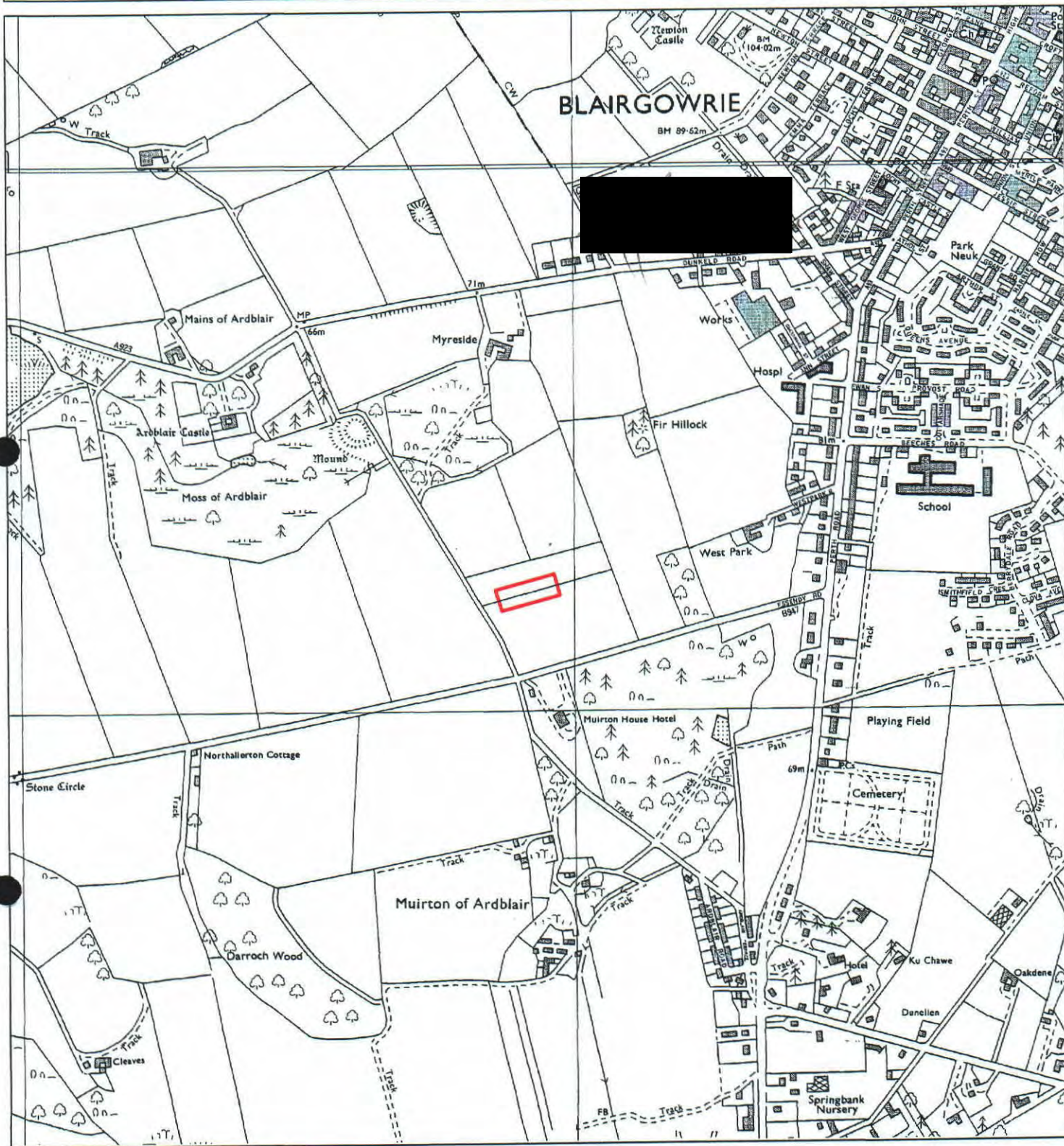
PTH 0 1


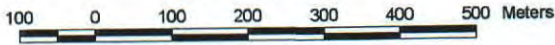
54

16 MAR 2001

12

This is the plan referred to in the entry in the Schedule affecting Myreside, ring-ditch & pit-alignment 440m S of, dated: 13 February 2001 and is signed as relative thereto.



<p>Myreside, ring-ditch & pit-alignment 440m S of</p> <p>Blairgowrie Parish</p> <p>Scheduled Area </p>	<p>N</p>  <p>MapSheet: NO14SE</p>	<p>Scale 1:10,000</p>  <p>This map is reproduced from the OS map by Historic Scotland with the permission of The Controller of Her Majesty's Stationery Office, © Crown copyright. Unauthorised reproduction infringes Crown Copyright and may lead to prosecution or civil proceedings. Licence No. GD 03135G0014.</p>
--	--	---

13