

132587 5/27/27
5573

ABN

THE ANCIENT MONUMENTS AND
ARCHAEOLOGICAL AREAS ACT 1979

Entry in the Schedule of Monuments

1996

27

AS

Re: The Monument known as
Mar, township on banks of Allt an
t-Sionnaich

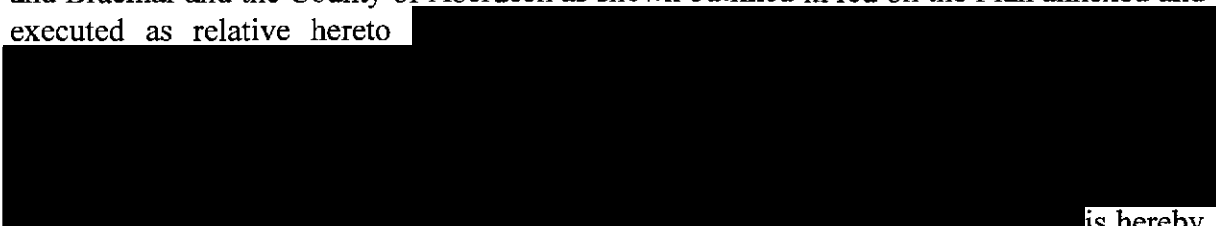
in the Parish of Crathie and Braemar and
County of Aberdeen

Search Sheet No: 132587

Solicitor
to the
Secretary of State
for Scotland
Victoria Quay
Edinburgh

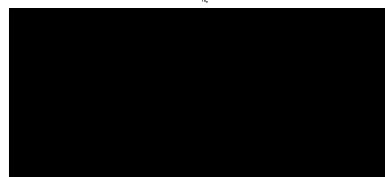
THE ANCIENT MONUMENTS AND ARCHAEOLOGICAL AREAS ACT 1979
ENTRY IN THE SCHEDULE OF MONUMENTS

The monument known as Mar, township on banks of Allt an t-Sionnaich comprises the remains of a farm township consisting of six buildings, a hut, three pens, a corn-drying kiln, and agricultural rigging within an area enclosed by a head dyke. The scheduled area measures 550m SW-NE by a maximum of 200m transversely, to include the visible features of the township and any other features around and between them associated with the construction and use of the settlement. The monument, which lies in the Parish of Crathie and Braemar and the County of Aberdeen as shown outlined in red on the Plan annexed and executed as relative hereto



is hereby included in the Schedule of Monuments appearing to the Secretary of State for Scotland to be of national importance compiled and maintained by him under section 1(1) of the Ancient Monuments and Archaeological Areas Act 1979.

Given under the Seal of the Secretary of State for Scotland.



Assistant Secretary
Date 7 October 1996

Historic Scotland
Longmore House
Salisbury Place
EDINBURGH
EH9 1SH

Register on behalf of the Secretary of State for Scotland in the Register of the County of Aberdeen.

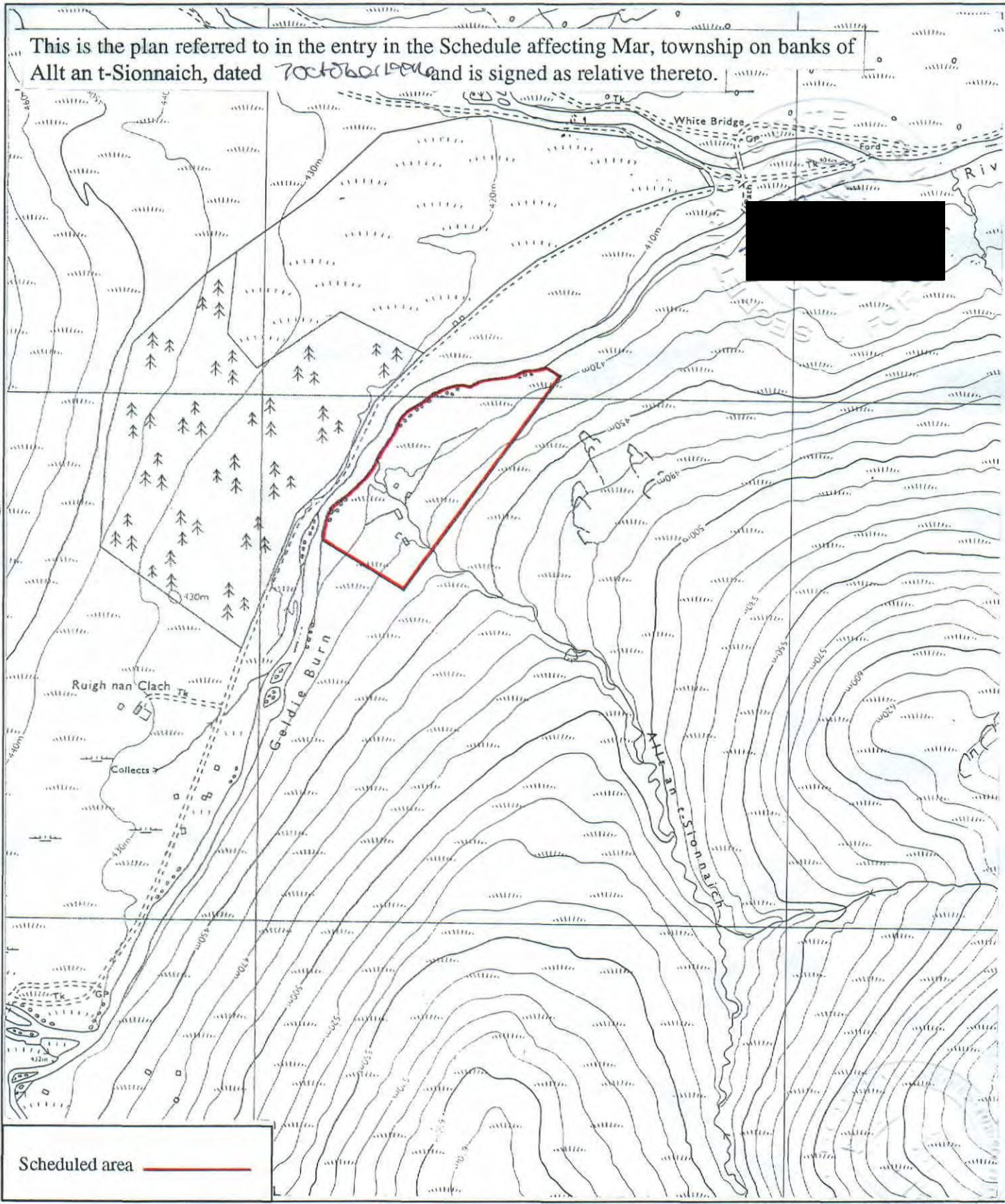


Solicitor, Edinburgh, Agent

MFA07264

REGISTERS OF SCOTLAND ✓
GENERAL REGISTER OF SASINES
COUNTY OF ABERDEEN
FICHE 321 FRAME 12
PRESENTED & RECORDED ON 17 OCT 1997

This is the plan referred to in the entry in the Schedule affecting Mar, township on banks of Allt an t-Sionnach, dated ~~1906~~ and is signed as relative thereto.



Scheduled area

**Mar, township on banks of
Allt an t-Sionnach**

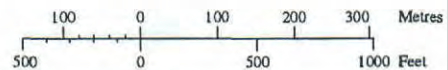
Crathie and Braemar Parish



N

Sheet: NO08NW

Scale 1:10,000



© Crown copyright reserved