

THE ANCIENT MONUMENTS AND
ARCHAEOLOGICAL AREAS ACT 1979

Entry in the Schedule of Monuments

1991

Re: The Monument known as
Bridgeton Hill, cairn 900m ENE of Mains of
Bridgeton

in the Parish of St Cyrus; Benholm and
County of Kincardine

16

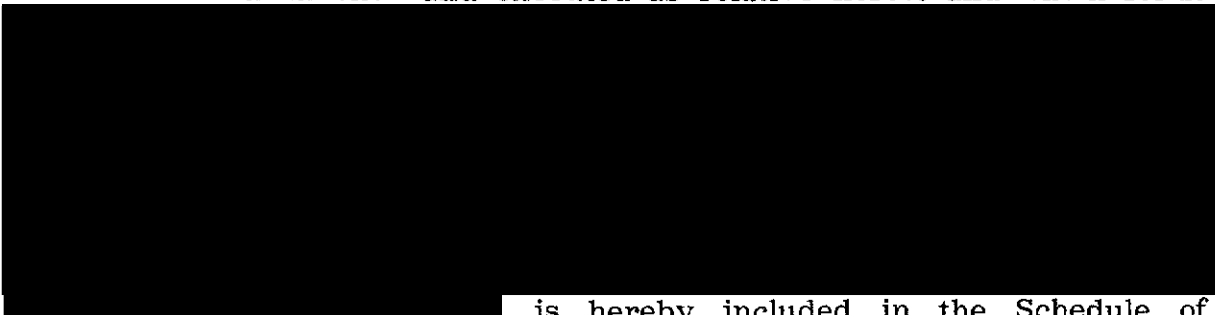
File Ref:

Solicitor
to the
Secretary of State
for Scotland
New St Andrew's House
Edinburgh

Plan 7333

THE ANCIENT MONUMENTS AND ARCHAEOLOGICAL AREAS ACT 1979
ENTRY IN THE SCHEDULE OF MONUMENTS

The monument known as Bridgeton Hill, cairn 900m ENE of Mains of Bridgeton comprises a burial cairn of the Early Bronze Age, some 2500 to 3000 years old. It is situated just to the S of the summit of the hill. It measures 19m in diameter and up to 2.6m in height. It will cover at least one burial and other burials may have been dug into its surface; earlier burials or cultivation remains may have been covered by the cairn. The march dyke and fences between Mains of Bridgeton and Mains of Brotherton cross the mound. The area to be scheduled measures 60m in diameter, centered on the cairn, to include the cairn and an area around it which features associated with its construction and use may survive. The above ground elements of the wall and fences crossing the site are specifically excluded. The monument, which lies in the Parish of St Cyrus; Benholm and the County of Kincardine as shown outlined in red on the Plan annexed and executed as relative hereto and which forms



is hereby included in the Schedule of Monuments appearing to the Secretary of State for Scotland to be of national importance compiled and maintained by him under section 1(1) of the Ancient Monuments and Archaeological Areas Act 1979.

Given under the Seal of the Secretary of State for Scotland.



Assistant Secretary
Date 5 March 1992

Historic Scotland
20 Brandon Street
Edinburgh
EH3 5RA

Register on behalf of the Secretary of State for Scotland in the Register of the County of Kincardine.

[Redacted Name]
Solicitor, Edinburgh, Agent

REGISTERS OF SCOTLAND
GENERAL REGISTER OF SASINES
COUNTY OF KINCARDINE

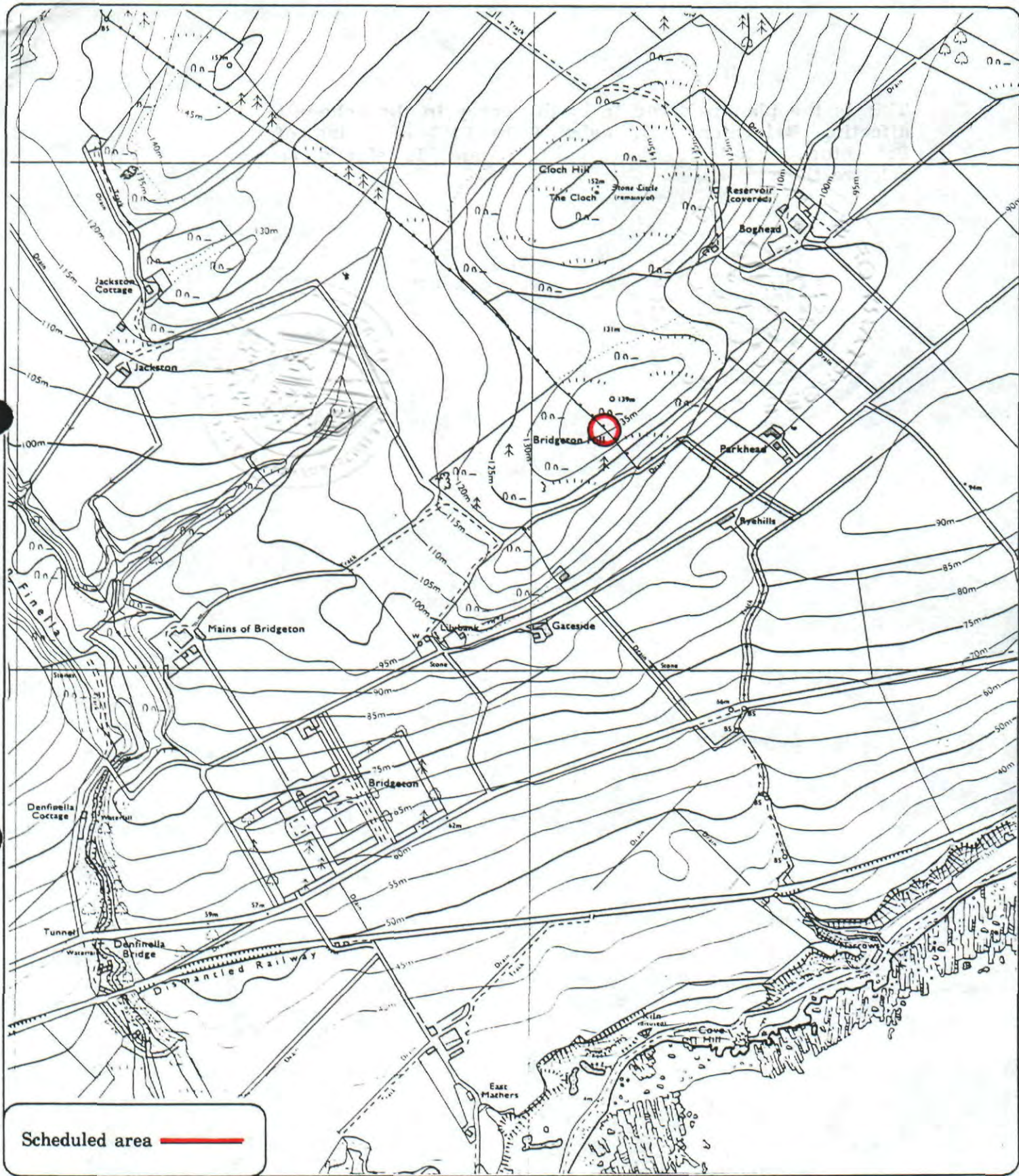
AN
Fiche.... 410..... Frame... 14.....

Presented and Recorded on - 3 SEP. 1992

N2101136.031

KC 92 410

14



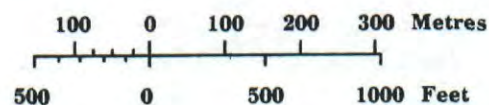
Bridgeton Hill, cairn
900m ENE of Mains of Bridgeton

St Cyrus; Benholm Parish



Sheet : NO 76 NE

Scale : 1/10,000



© Crown copyright reserved