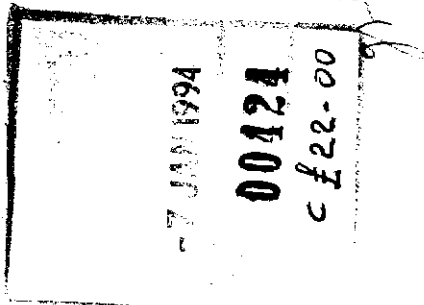


⑨

61801  
28921  
58655  
101700

THE ANCIENT MONUMENTS AND  
ARCHAEOLOGICAL AREAS ACT 1979

Entry in the Schedule of Monuments



1991

Re: The Monument known as  
North Gellan, settlement and field  
system 350m N of

in the Parish of Coull and  
County of Aberdeen

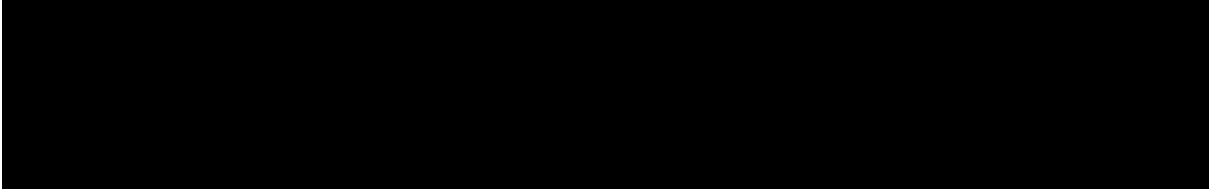
File Ref:

Solicitor  
to the  
Secretary of State  
for Scotland  
New St Andrew's House  
Edinburgh

7333

THE ANCIENT MONUMENTS AND ARCHAEOLOGICAL AREAS ACT 1979  
ENTRY IN THE SCHEDULE OF MONUMENTS

The monument known as North Gellan, settlement and field system 350m N of comprises the remains of a settlement and field system of the Bronze Age or Iron Age, some 2000 to 3000 years old. There are eight circular house stances between 9m and 14m in diameter and an associated field system marked by low banks and clearance heaps. The fields vary in size from c 20m by 17m to c 60m by 30m. The area to be scheduled measures a maximum of 500m WNW-ESE by 350m transversely. The modern public road and its boundary walls and fences, and the access road to Crossfold are specifically excluded. The monument, which lies in the Parish of Coull and the County of Aberdeen as shown outlined in red on the Plan annexed and executed as relative hereto and which forms part of



included in the Schedule of Monuments appearing to the Secretary of State for Scotland to be of national importance compiled and maintained by him under section 1(1) of the Ancient Monuments and Archaeological Areas Act 1979.

Given under the Seal of the Secretary of State for Scotland.



Assistant Secretary  
Date 22 AUGUST 1991

Historic Scotland  
20 Brandon Street  
Edinburgh  
EH3 5RA

Register on behalf of the Secretary of State for Scotland in the Register of the County of Aberdeen.



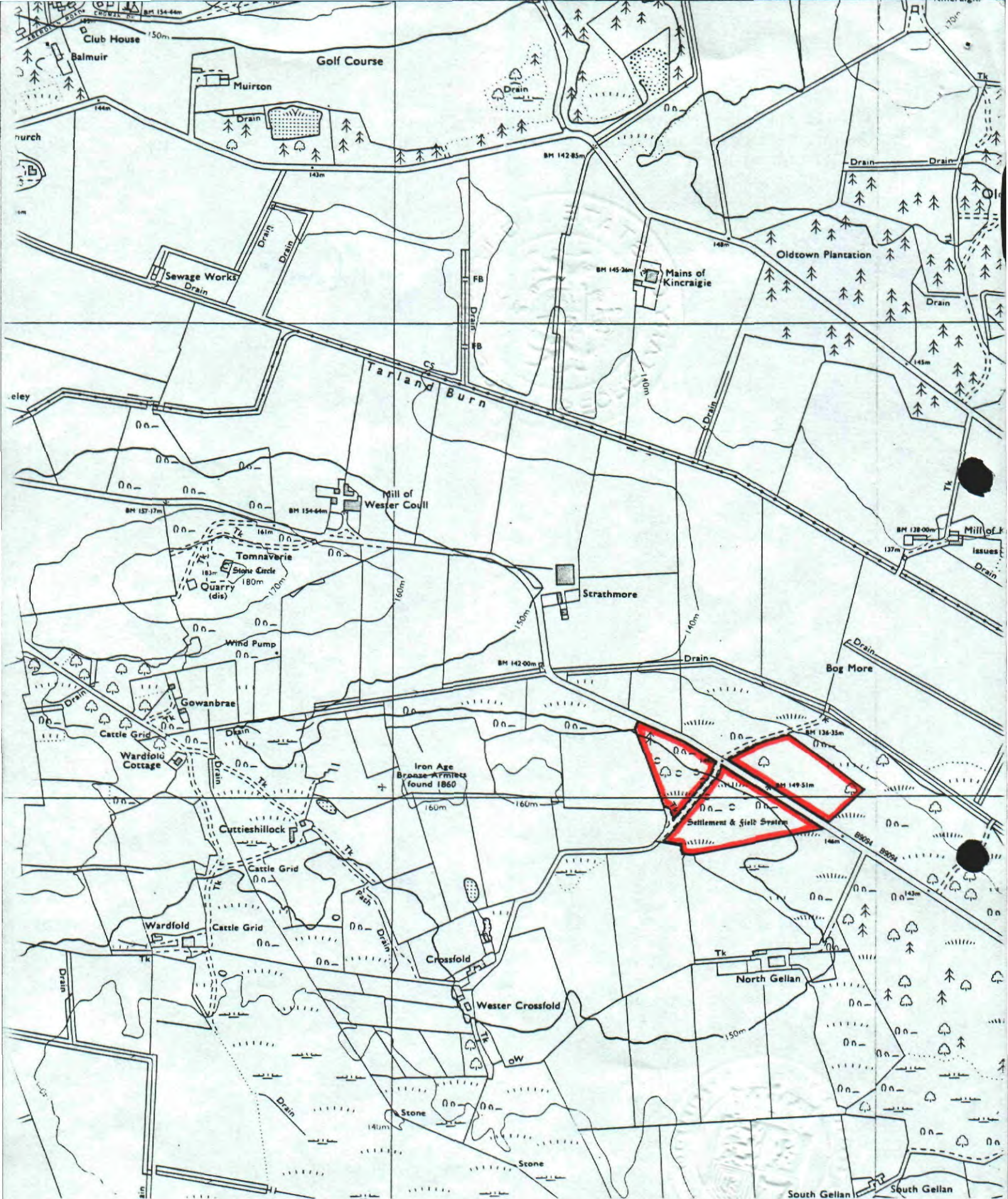
Solicitor, Edinburgh, Agent

ABS 4

30

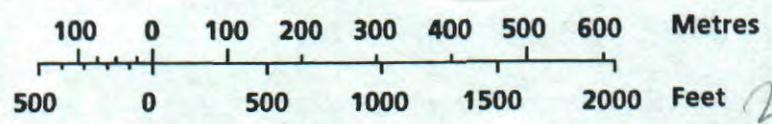
REGISTERS OF SCOTLAND  
GENERAL REGISTER OF SASINES  
COUNTY OF ABERDEEN  
Fiche ..... 30 ..... Frame ..... 30 .....  
Presented and Recorded on ..... 7 JAN 1994

30



**North Gellan, settlement and field system 350m N of**

Scale : 1/10 000



**Coull Parish**  
**4B9 4 30**

**Sheet: NJ 40 SE**

© Crown copyright reserved

32