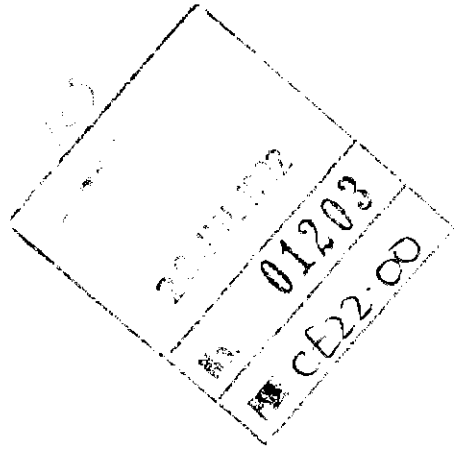


*Caith
lpc*

THE ANCIENT MONUMENTS AND
ARCHAEOLOGICAL AREAS ACT 1979



Entry in the Schedule of Monuments

1991

Re: The Monument known as
Loedebest, post medieval settlement 1500m
WNW of

in the Parish of Latheron and
County of Caithness

18

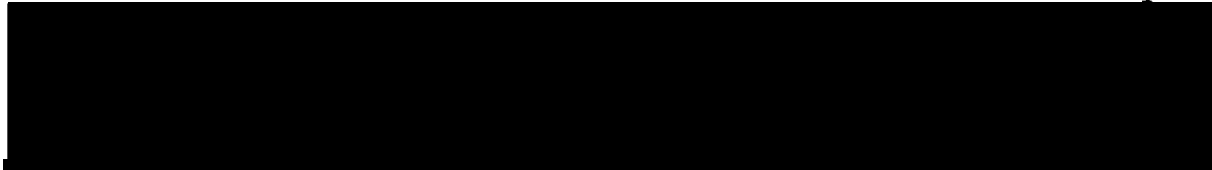
File Ref:

7353
Solicitor
to the
Secretary of State
for Scotland
New St Andrew's House
Edinburgh

51001

THE ANCIENT MONUMENTS AND ARCHAEOLOGICAL AREAS ACT 1979
ENTRY IN THE SCHEDULE OF MONUMENTS

The monument known as Loedebest, post medieval settlement 1500m WNW of comprises a post medieval farmstead which consists of a range of structures including buildings, enclosures and an area of infield cultivation. The buildings include two long houses, a small square building and a kiln barn. There is a small fan-shaped enclosure to the NW of the W building. In addition an area of rig and furrow lies to the N and NW of the buildings. The area to be scheduled measures a maximum of 155m WNW-SSE by 110m SSW-NNE, to include the buildings, the enclosure and the field system. This area is defined by a road to the NE, a small burn to the NW, by a terrace sloping to lower ground on the SW and a turf dyke to the SE. The monument, which lies in the Parish of Latheron and the County of Caithness as shown outlined in red on the Plan annexed and executed as relative hereto and which forms part



is hereby included in the Schedule of Monuments appearing to the Secretary of State for Scotland to be of national importance compiled and maintained by him under section 1(1) of the Ancient Monuments and Archaeological Areas Act 1979.

Given under the Seal of the Secretary of State for Scotland.



Assistant Secretary
Date 12 NOVEMBER 1991

Historic Scotland
20 Brandon Street
Edinburgh
EH3 5RA

Register on behalf of the Secretary of State for Scotland in the Register of the County of Caithness.

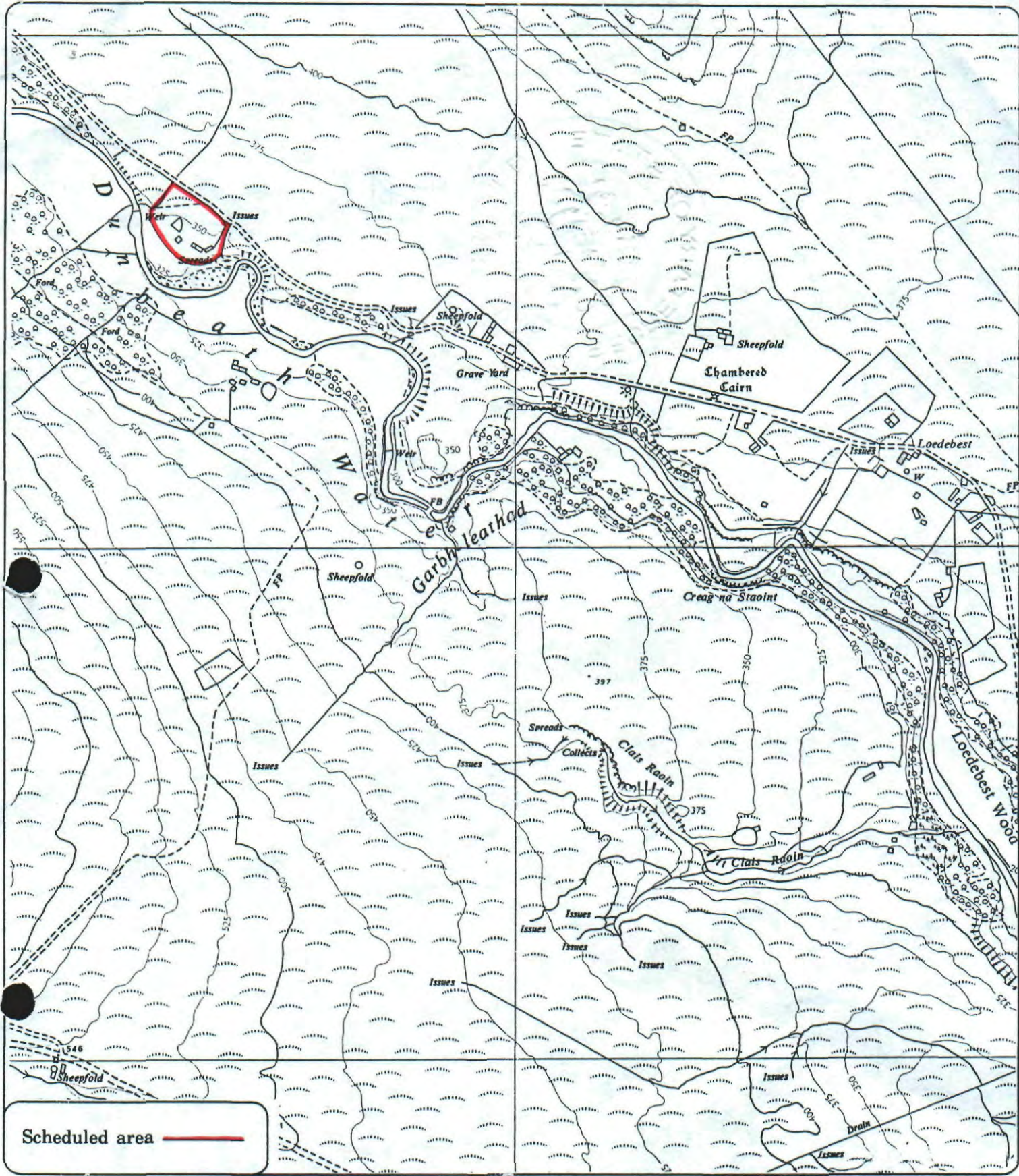


Solicitor, Edinburgh, Agent

E2101927.101


CA 92 85

REGISTERS OF SCOTLAND
GENERAL REGISTER OF SASINES
COUNTY OF CAITHNESS
Fiche.....85..... Frame. 19
28 JUL 1992
Presented and Recorded on



Scheduled area

Loedebest, post medieval settlement 1500m WNW of Latheron Parish


 N
 Sheet: ND13SW

Scale: 1/10,000

100 0 100 200 300 Metres
 500 0 500 1000 Feet

© Crown copyright reserved