

5143.

THE ANCIENT MONUMENTS AND
ARCHAEOLOGICAL AREAS ACT 1979

Entry in the Schedule of Monuments

219
05986
C £22.00

1991

Re: The Monument known as
The Cloch, cairn 1700m W of Mains of
Brotherton

in the Parish of Benholm and
County of Kincardine

15

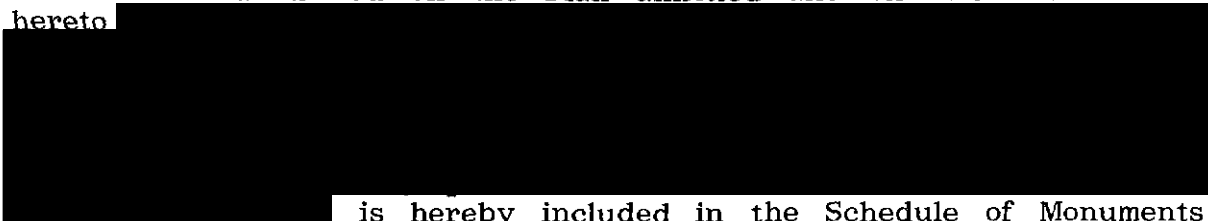
File Ref:

Solicitor
to the
Secretary of State
for Scotland
New St Andrew's House
Edinburgh

has 7333

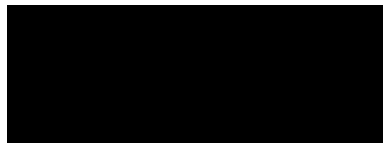
THE ANCIENT MONUMENTS AND ARCHAEOLOGICAL AREAS ACT 1979
ENTRY IN THE SCHEDULE OF MONUMENTS

The monument known as The Cloch, cairn 1700m W of Mains of Brotherton comprises an unusual burial cairn of the Bronze Age situated on the summit of Cloch Hill. It comprises a turf covered cairn 18m in diameter and 0.5m high; the cairn may be a ring cairn with a central open area c8m in diameter. The stone which gives the site its name stands on the SSE; it is a conglomerate slab set on edge measuring 2.3m by 1.7m and 0.6m thick. It is flanked by two rounded kerb stones; this arrangement has suggested that the site is a form of Recumbent Stone Circle. The area to be scheduled measures 60m in diameter centred on the cairn, to include the cairn and an area around it in which traces of activities associated with its construction and use may survive. The monument, which lies in the Parish of Benholm and the County of Kincardine as shown outlined in red on the Plan annexed and executed as relative hereto



is hereby included in the Schedule of Monuments appearing to the Secretary of State for Scotland to be of national importance compiled and maintained by him under section 1(1) of the Ancient Monuments and Archaeological Areas Act 1979.

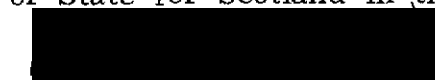
Given under the Seal of the Secretary of State for Scotland.



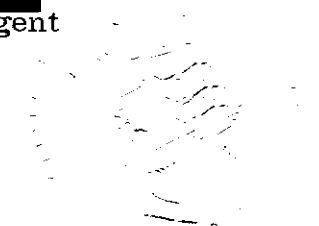
Assistant Secretary
Date 21 OCTOBER 1991

Historic Scotland
20 Brandon Street
Edinburgh
EH3 5RA

Register on behalf of the Secretary of State for Scotland in the Register of the County of Kincardine.



Solicitor, Edinburgh, Agent



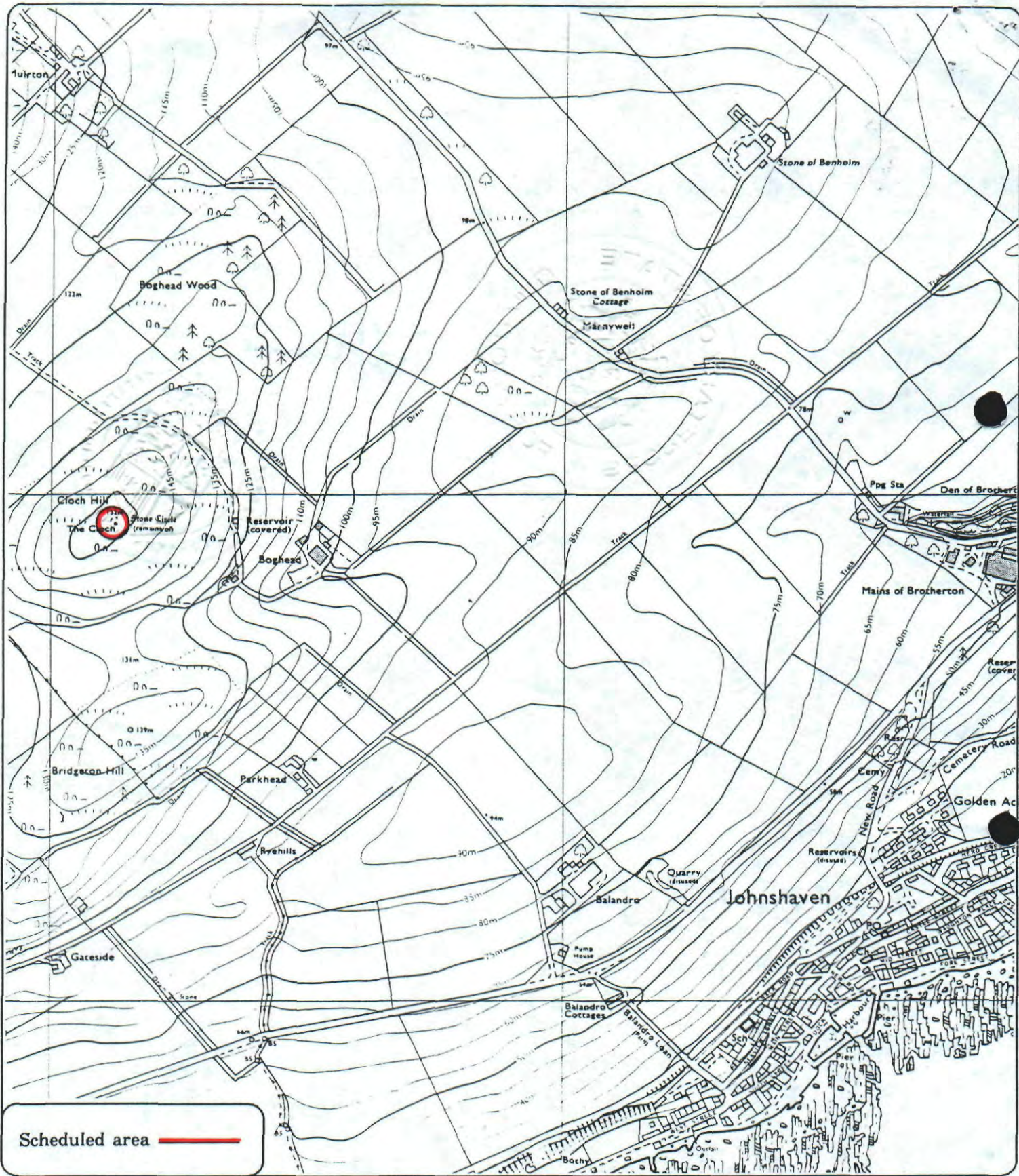
REGISTERS OF SCOTLAND
GENERAL REGISTER OF SASINES
COUNTY OF KINCARDINE

Fiche... 410... Frame... 11

Presented and Recorded on 3 SEP 1992

N2100836.031

RC 92 410



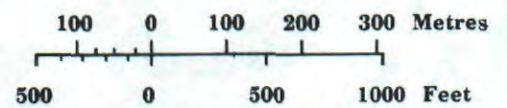
**The Cloch, cairn
1700m W of Mains of Brotherton**

Benholm Parish



Sheet : NO 76 NE

Scale : 1/10,000



© Crown copyright reserved

KC 92 410