

*Kinc*

26 NOV 1991	
No.	07305
FEE	£22.50

THE ANCIENT MONUMENTS AND  
ARCHAEOLOGICAL AREAS ACT 1979

Entry in the Schedule of Monuments

1991

Re: The Monument known as  
The Ring, enclosed cairn 750m SE of  
Arnbarrow

in the Parish of Fordoun and  
County of Kincardine

File Ref:

*Office of the Secretary of State for Scotland*

*FAS 7353*

Solicitor  
to the  
Secretary of State  
for Scotland  
New St Andrew's House  
Edinburgh

THE ANCIENT MONUMENTS AND ARCHAEOLOGICAL AREAS ACT 1979  
ENTRY IN THE SCHEDULE OF MONUMENTS

The monument known as The Ring, enclosed cairn 750m SE of Arnbarrow comprises a prehistoric site of unusual design. The cairn itself is a stony mound 7.5m in diameter and 0.3m in height. It is surrounded by a low turf covered bank, concentric with it, c 2m across and 0.3m high, enclosing an area 19m in diameter. White quartz blocks, a feature of prehistoric ceremonial sites, especially in the NE are visible on the bank. The area to be scheduled measures 60m in diameter, centred on the cairn. The modern track in the area is specifically excluded. The monument, which lies in the Parish of Fordoun and the County of Kincardine as shown outlined in red on the Plan annexed and executed as relative hereto

[REDACTED] is hereby included in the Schedule of Monuments appearing to the Secretary of State for Scotland to be of national importance compiled and maintained by him under section 1(1) of the Ancient Monuments and Archaeological Areas Act 1979.

Given under the Seal of the Secretary of State for Scotland.

[REDACTED]  
Assistant Secretary

Date 18 February 1991

Historic Buildings and Monuments, Scotland  
20 Brandon Street  
Edinburgh  
EH3 5RA

Register on behalf of the Secretary of State for Scotland in the Register of the County of Kincardine.

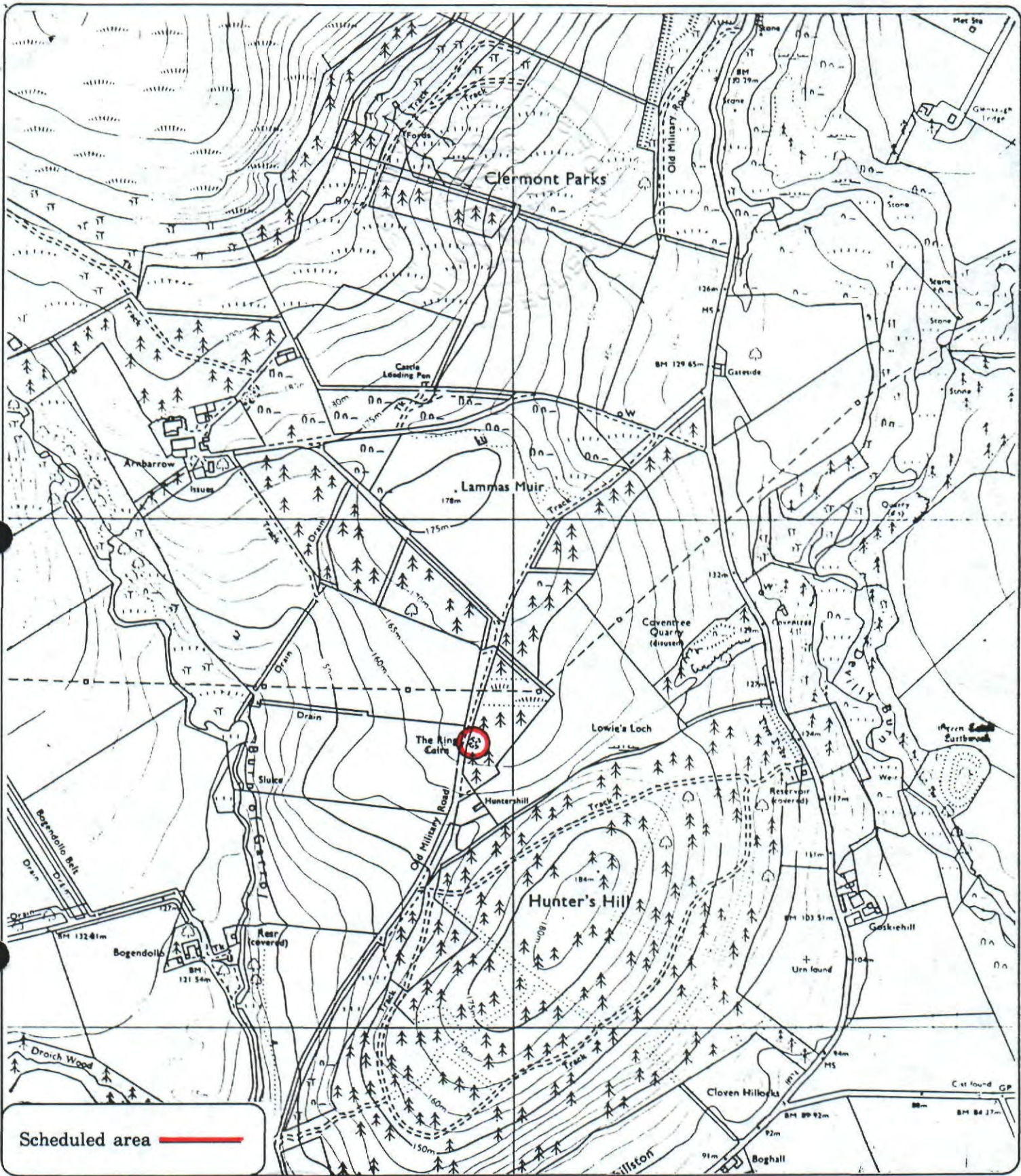
[REDACTED]  
Solicitor, Edinburgh, Agent

C2103108.090

REGISTERS OF SCOTLAND  
GENERAL REGISTER OF SASINES  
COUNTY OF KINCARDINE

Fiche.....437... Frame.....31.....  
Presented and Recorded on 26 NOV 1991

31



Scheduled area

**The Ring, enclosed cairn**  
**750m SE of Arnbarrow**

**Fordoun Parish**

**N**  
**Sheet : NO 67 NE**

**Scale : 1/10,000**

© Crown copyright reserved