

Kinc

THE ANCIENT MONUMENTS AND  
ARCHAEOLOGICAL AREAS ACT 1979

Entry in the Schedule of Monuments

1990

Re: The Monument known as  
Cairn-mon-earn, cairn

in the Parish of Durris and  
County of Kincardine

ST - P.M.

Letter with 3 copies to ...  
File Ref:

P. 1000  
Solicitor  
to the  
Secretary of State  
for Scotland  
New St Andrew's House  
Edinburgh

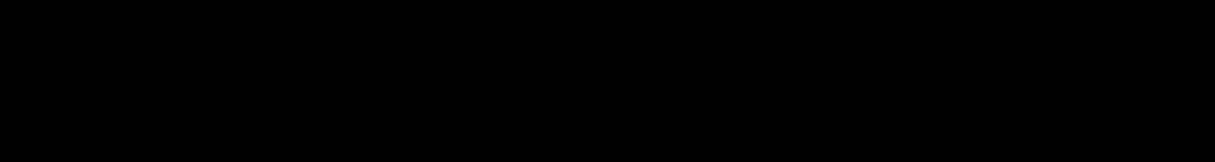
07389

File 80

10721

THE ANCIENT MONUMENTS AND ARCHAEOLOGICAL AREAS ACT 1979  
ENTRY IN THE SCHEDULE OF MONUMENTS

The monument known as Cairn-mon-earn, cairn comprises a substantial burial cairn of the Early Bronze Age situated on the summit of Cairn-mon-earn, measuring 17m in diameter and 3m in height. It has been disturbed by the insertion of an OS triangulation pillar, by the construction of the foundations of a fire watching hut and by the building of small shelters from the stone; none of these will have disturbed the deposits under the cairn. An area measuring 30m in diameter, centred on the cairn, is proposed for scheduling. The monument, which lies in the Parish of Durris and the County of Kincardine as shown outlined in red on the Plan annexed and executed as relative hereto and which forms part



, is hereby included in the Schedule of Monuments appearing to the Secretary of State for Scotland to be of national importance compiled and maintained by him under section 1(1) of the Ancient Monuments and Archaeological Areas Act 1979.

Given under the Seal of the Secretary of State for Scotland.



Assistant Secretary  
Date 18 December 1990

Historic Buildings and Monuments, Scotland  
20 Brandon Street  
Edinburgh  
EH3 5RA

Register on behalf of the Secretary of State for Scotland in the Register of the County of Kincardine

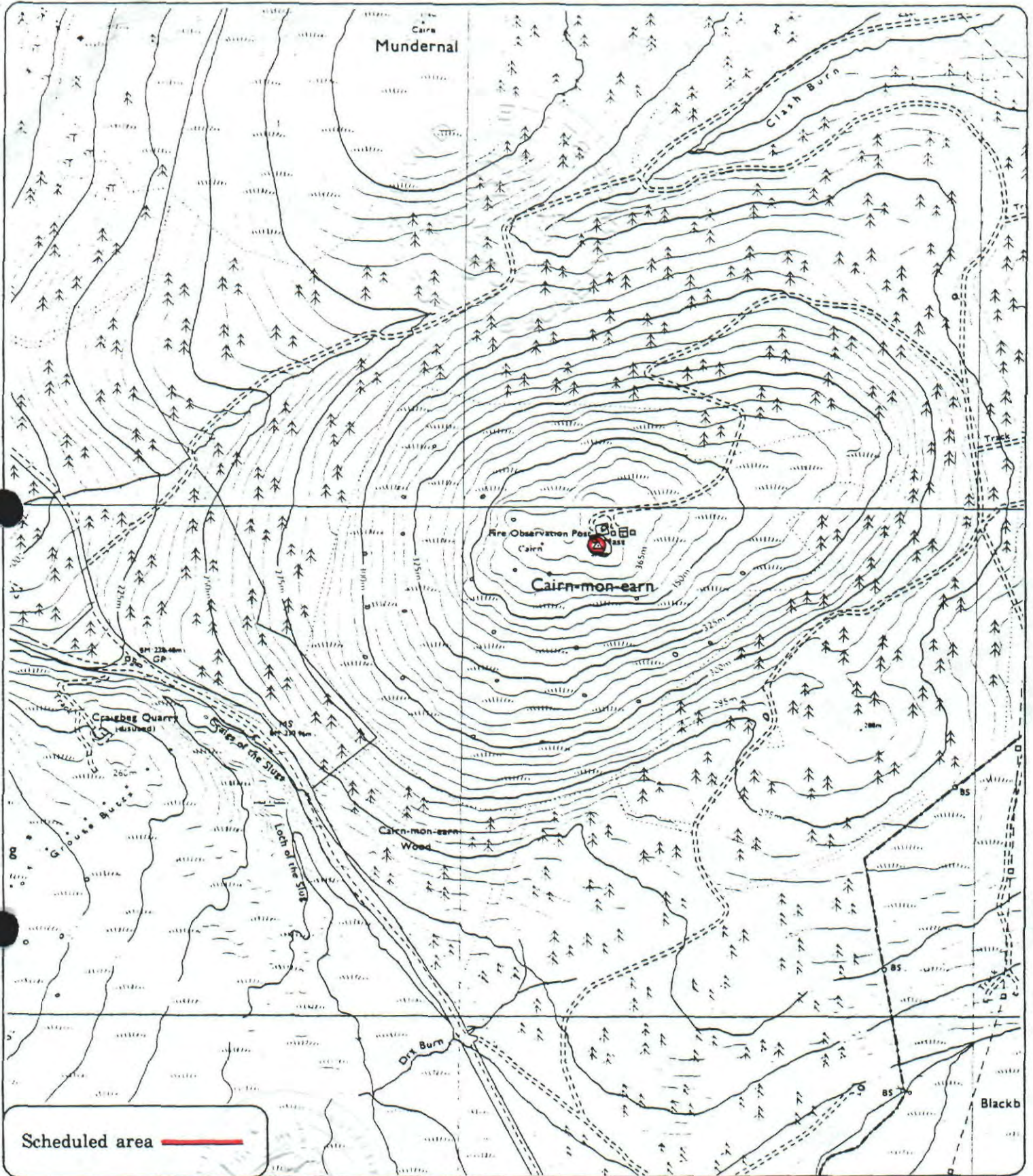
[Redacted]  
Solicitor, Edinburgh, Agent

K2100831.020

JHE 437

REGISTERS OF SCOTLAND  
GENERAL REGISTER OF SASINES  
COUNTY OF KINCARDINE

Fiche.....437..... Frame.....43.....  
Presented and Recorded on 26 NOV 1991



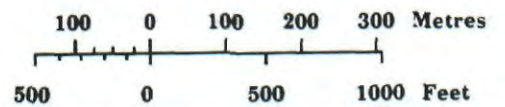
**Cairn-mon-earn, cairn**

**Durriss Parish**



**Sheet : NO 79 SE**

**Scale : 1/10,000**



© Crown copyright reserved

NG 91 437

*please photos doquet only page 1-*