

THE ANCIENT MONUMENTS AND
ARCHAEOLOGICAL AREAS ACT 1979

Entry in the Schedule of Monuments

10 Aug 1988	16410	cf 11.00
-------------	-------	----------

1988

Re: The Monument known as
Bellmuir, settlement, field system and
cairns 900m ~~SW~~^{NE} of Auchencrieve
in the Parish of Methlick and
County of Aberdeen

~~118~~ 20 45 44

File Ref:

Solicitor
to the
Secretary of State
for Scotland
New St Andrew's House
Edinburgh

FAS 7333

THE ANCIENT MONUMENTS AND ARCHAEOLOGICAL AREAS ACT 1979
ENTRY IN THE SCHEDULE OF MONUMENTS

The monument known as Bellmuir, settlement, field system and cairns 900m SW of Auchencrieve comprises a well preserved settlement, including at least 8 circular house stances measuring between 6m and 9m in diameter, and its associated field system (comprising numerous banks and clearance cairns). There is also a burial cairn measuring 10m in diameter. The area to be scheduled measures a maximum of 850m from ESE to WNW and 410m transversely, to include the settlement, the field system, the burial cairn and an area around and between the separate visible elements in which traces of the construction and use of the monument will survive. Modern structures in the area, including the enclosed garden of Bellmuir Cottage, tracks and modern fences and walls are specifically excluded from the scheduling. The monument, which lies in the Parish of Methlick and the County of Aberdeen as shown outlined in red on the Plan annexed and executed as relative hereto



is hereby included in the Schedule of Monuments appearing to the Secretary of State for Scotland to be of national importance compiled and maintained by him under section 1(1) of the Ancient Monuments and Archaeological Areas Act 1979.

Given under the Seal of the Secretary of State for Scotland.



Assistant Secretary
Date 31 May 1988

REGISTERS OF SCOTLAND.
GENERAL REGISTER OF SASINES
COUNTY OF ABERDEEN
Book 8580 folio 82
Presented and Recorded on 10 AUG 1988

Scottish Development Department
Historic Buildings and Monuments
20 Brandon Street
Edinburgh
EH3 5RA

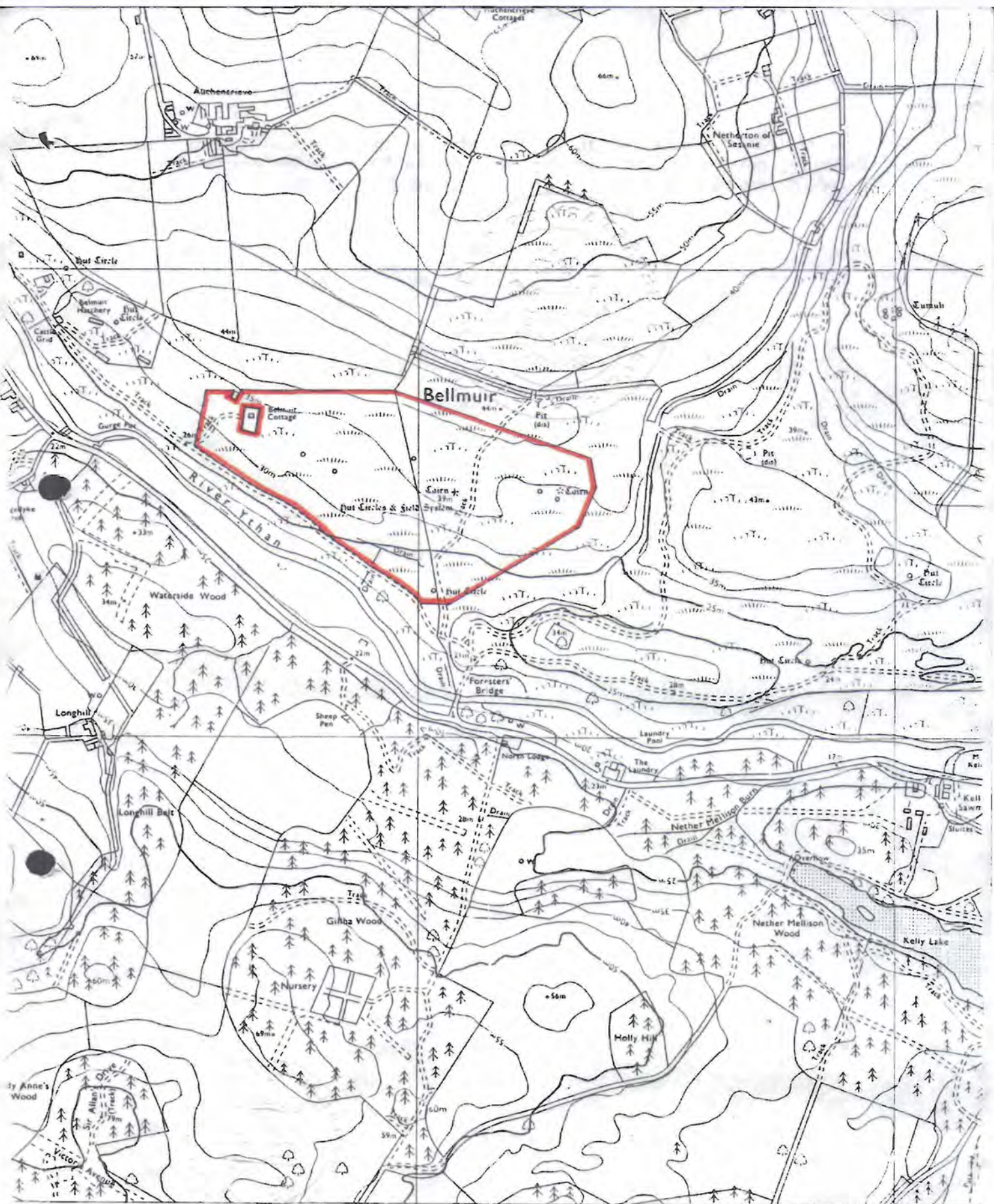
Register on behalf of the Secretary of State for Scotland in the Register of the County of Aberdeen.

Solicitor, Edinburgh, Agent

A2100809.048

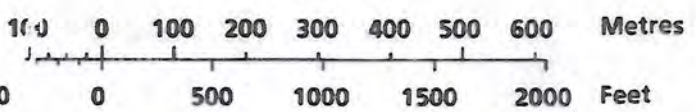
AB 8580

2



Scale : 1/10 000

**Bellmuir, settlement, field system and
cairns 900m SW of Auchencrieve**



Methlick Parish

Sheet : NJ 83 NE

© Crown copyright reserved

AB 8580

83