

THE ANCIENT MONUMENTS AND
ARCHAEOLOGICAL AREAS ACT 1979

Entry in the Schedule of Monuments

1988

Re: The Monument known as
Blackhill Wood, long cairn and cairn E of
in the Parish of Glenbervie and
County of Kincardine

File Ref:

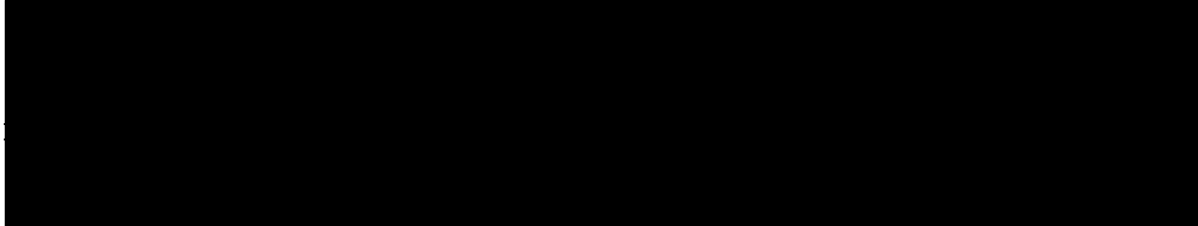
Solicitor
to the
Secretary of State
for Scotland
New St Andrew's House
Edinburgh

H2105303.038

File 7333

THE ANCIENT MONUMENTS AND ARCHAEOLOGICAL AREAS ACT 1979
ENTRY IN THE SCHEDULE OF MONUMENTS

The monument known as Blackhill Wood, long cairn and cairn E of comprises a long cairn measuring up to 60m EW and up to 30m NS and 30m E of its E end, a round cairn measuring some 8m across and all else within an area measuring 100m EW along the roadside fence and up to 110m EW on its south side by 35m NS with its N end defined by but excluding a fence at the edge of the public road and its W end defined by but excluding the fence dividing the field from Blackhill Wood. The monument, which lies in the Parish of Glenbervie and the County of Kincardine as shown outlined in red on the Plan annexed and executed as relative hereto and which forms part of the subjects described in the



hereby included in the Schedule of Monuments appearing to the Secretary of State for Scotland to be of national importance compiled and maintained by him under section 1(1) of the Ancient Monuments and Archaeological Areas Act 1979.

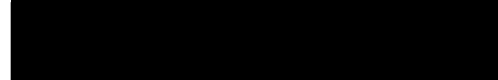
Given under the Seal of the Secretary of State for Scotland.



Assistant Secretary
Date 23 December 1988

Scottish Development Department
Historic Buildings and Monuments
20 Brandon Street
Edinburgh
EH3 5RA

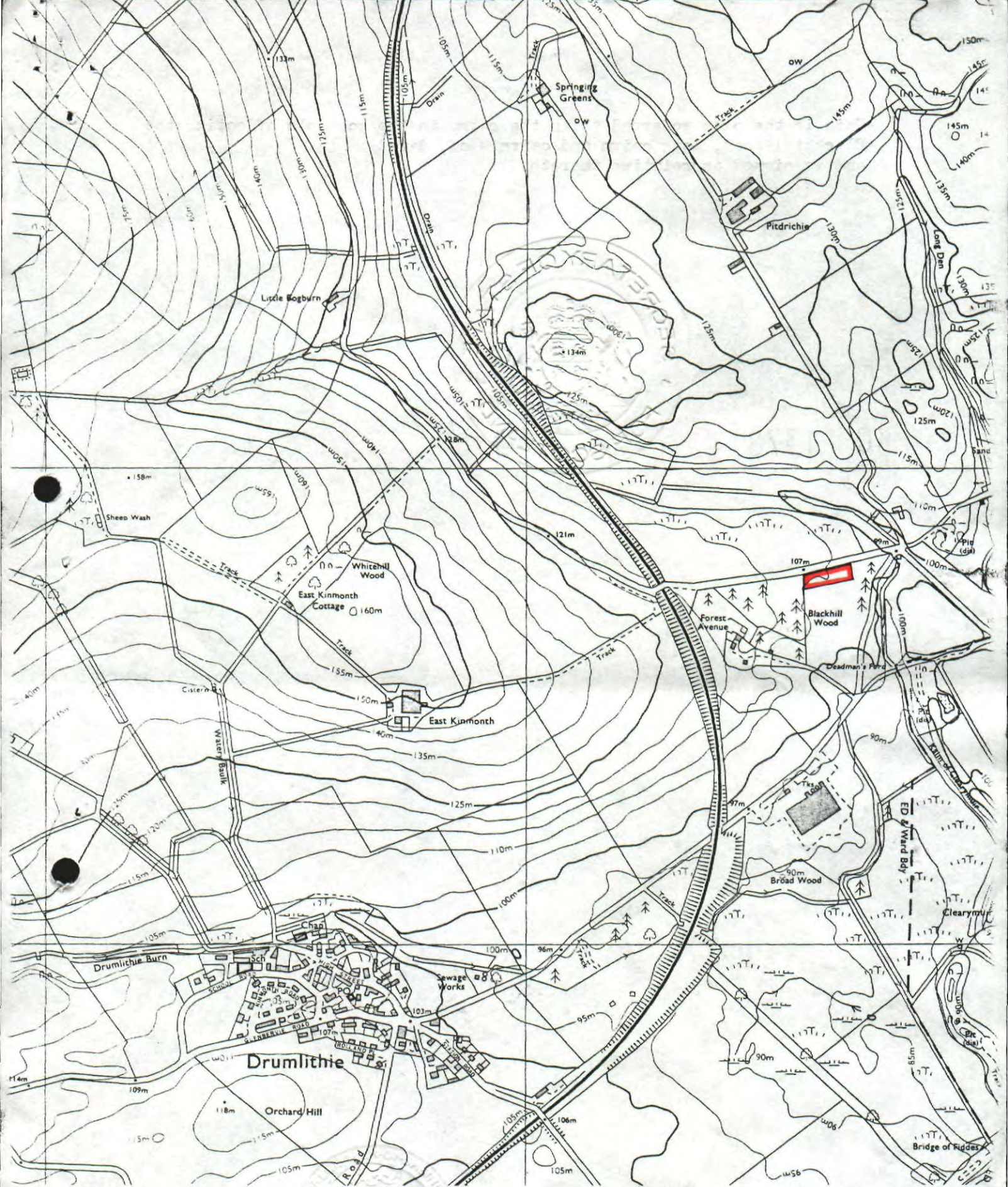
Register on behalf of the Secretary of State for Scotland in the Register of the County of Kincardine



Solicitor, Edinburgh, Agent

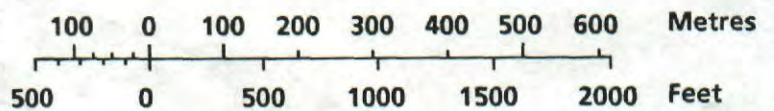
REGISTERS OF SCOTLAND.
GENERAL REGISTER OF SASINES
COUNTY OF KINCARDINE

Book 1378 Folio 214
Presented and Recorded on 23 JAN 1989



**Blackhill Wood, long cairn and
cairn E of**

Scale : 1/10 000



Glenberrie Parish

Sheet NO 78 SE

© Crown copyright reserved

KC 1378

215