

Solicitor
to
the Secretary of State for Scotland,
New St. Andrew's House,
Edinburgh, EH1 3TE.

Solicitor
to
the Secretary of State for Scotland,
New St. Andrew's House,
Edinburgh, EH1 3TE.

7 NOV 1981
NO. 874
FEE £11.00
BC
JIP

CERTIFICATE

of

SERVICE OF NOTICE

by

**THE
SECRETARY OF STATE
FOR SCOTLAND**

under

**THE ANCIENT
MONUMENTS ACTS**

1981

Affecting A castle 950 metres North
North East of Dowlow known as
East Castle, Coldingham, Berwick

File Ref SC 26209/1A

SOLICITOR

TO

THE SECRETARY OF STATE

FOR SCOTLAND



THE ANCIENT MONUMENTS ACTS, 1913 AND 1931

Owner of the monument consisting of a castle 950 metres North North East of Dowlaw known as Fast Castle, shown coloured red on the annexed plan part of Farm and lands of Dowlaw in the Parish and County after-mentioned extending to One Thousand and Thirteen Acres or thereby, described in Twenty-third day of November and recorded in the Division of the General Register of Sasines for the County aftermentioned on the Fifth day of December both in the year Nineteen Hundred and Seventy-nine.

situated in the Parish of Coldingham and County of Berwick.

In accordance with the provisions of Section 6 of the Ancient Monuments Act, 1931, as read with the Transfer of Functions (Scottish Royal Parks and Ancient Monuments) Order, 1969, the Secretary of State hereby gives notice that it is his intention to include the Monument above specified in a list of monuments to be published by him under Section 12 of the Ancient Monuments Consolidation and Amendment Act, 1913.

Given under the Seal of the Secretary of State for Scotland

Assistant Secretary

SCOTTISH DEVELOPMENT DEPARTMENT (ANCIENT MONUMENTS) 17 ATHOLL CRESCENT EDINBURGH EH3 8JN

1 October 1981

REGISTERS OF SCOTLAND. GENERAL REGISTER OF SASINES. COUNTY OF BERWICK.

Book 557 Folio 26 Presented and Recorded on 20/10/1981

Iain James MacKenzie, Principal, being an officer duly authorised by the Secretary of State in that behalf hereby certify that the notice of which the foregoing is a duplicate together with a copy of the plan annexed and signed as relative hereto was served on the before named

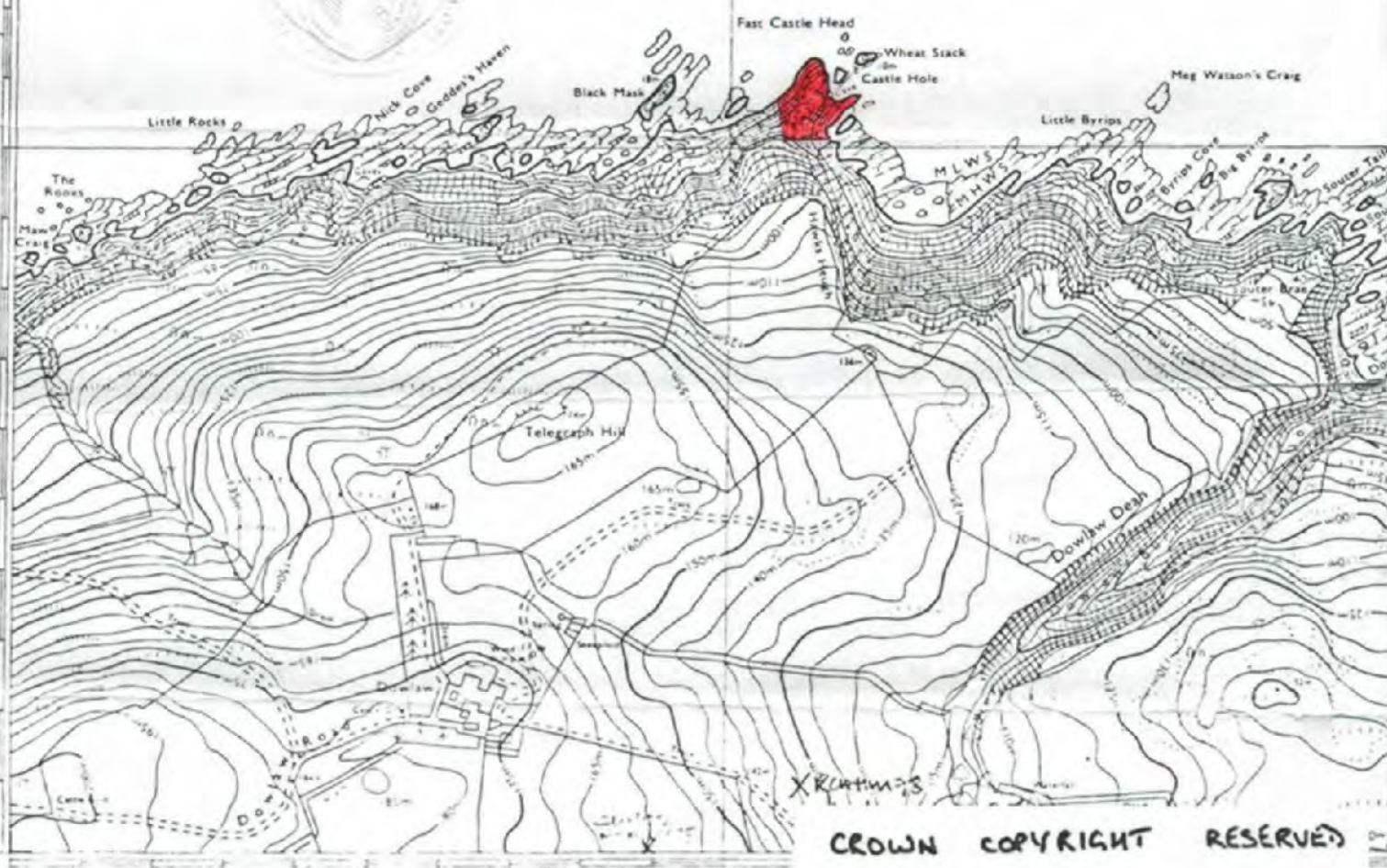
by posting on the first day of October 1981 between the hours of 3 o'clock and 4 o'clock after noon at the

Solicitor, Edinburgh, Agent.

26

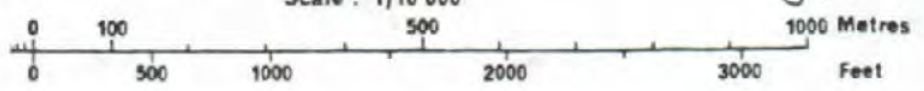


This is the plan referred to in my Certificate of Service of
Notice affecting ... Fast Castle 950 m NNE of ...
Dowlaw
dated, 1 October 1981 ... and is signed as
relative thereto.



CROWN COPYRIGHT RESERVED

Scale: 1/10 000



BE 557

FAST CASTLE 950 M NNE OF DOWLAU

27a
1000 Metres