

NOV 1995  
1986  
C £25.00

EW

*Wig*

THE ANCIENT MONUMENTS AND  
ARCHAEOLOGICAL AREAS ACT 1979

Entry in the Schedule of Monuments

1995

*32*

Re: The Monument known as  
Boreland Mote, motte

in the Parish of Kirkcowan and  
County of Wigtown

*END*

Search Sheet No: 1886

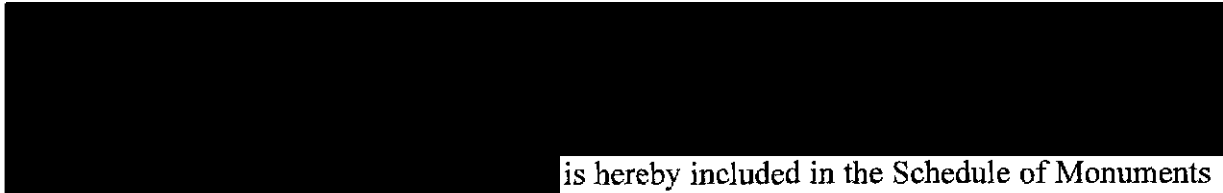
Solicitor  
to the  
Secretary of State  
for Scotland  
New St Andrew's House  
Edinburgh

MFA04844

*MFA 7333*

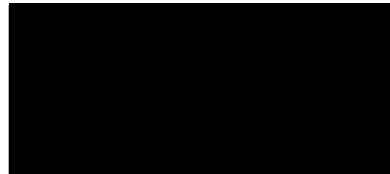
THE ANCIENT MONUMENTS AND ARCHAEOLOGICAL AREAS ACT 1979  
ENTRY IN THE SCHEDULE OF MONUMENTS

The monument known as Boreland Mote, motte comprises of a motte, a mound which formed the site of an early timber castle. The scheduled area is bounded on the W by the dry stone wall bordering the road, though it does not include it, and on the E by the outer foot of the flood-bank of the River Bladnoch. It measures a maximum of 170m N-S by 50m. The monument, which lies in the Parish of Kirkcowan and the County of Wigtown as shown outlined in red on the Plan annexed and executed as relative hereto and which forms



is hereby included in the Schedule of Monuments appearing to the Secretary of State for Scotland to be of national importance compiled and maintained by him under section 1(1) of the Ancient Monuments and Archaeological Areas Act 1979.

Given under the Seal of the Secretary of State for Scotland.

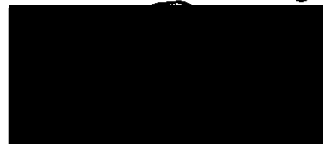


Assistant Secretary  
Date 22 AUGUST 1995

Historic Scotland  
Longmore House  
Salisbury Place  
EDINBURGH  
EH9 1SH

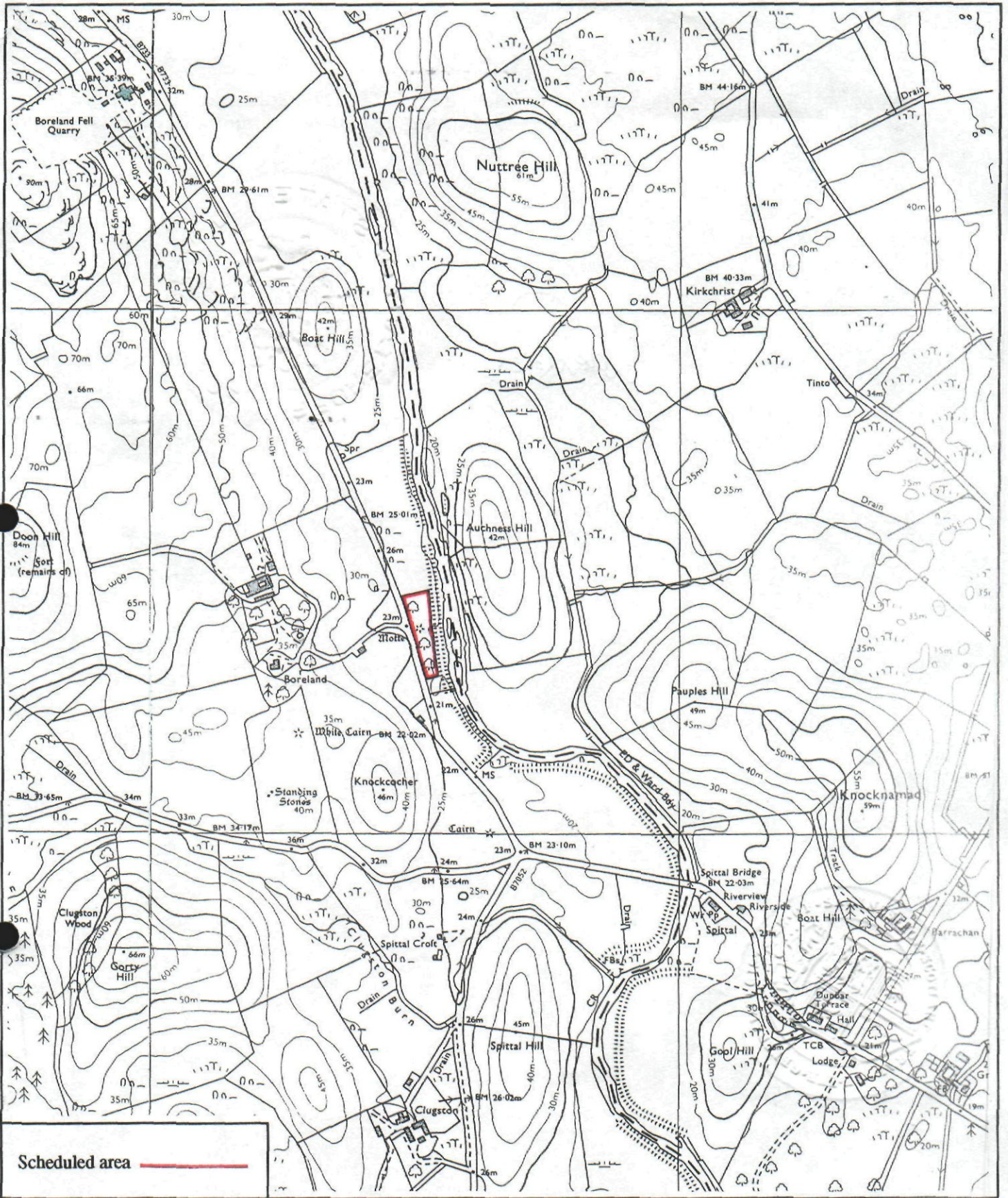


Register on behalf of the Secretary of State for Scotland in the Register of the County of Wigtown.



Solicitor, Edinburgh, Agent

MFA04644  
172  
REGISTERS OF SCOTLAND  
GENERAL REGISTER OF SASINES  
COUNTY OF WIGTOWN  
FICHE 172 FRAME 9  
PRESENTED & RECORDED ON 26 NOV 1995



Scheduled area —

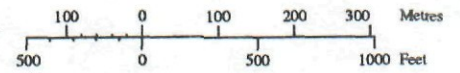
**Boreland Mote, motte**

**Kirkcowan Parish**



Sheet: NX35NE

**Scale 1:10,000**



© Crown copyright reserved