

1541
27 MAR 2002
YEARLY RUNNING NO
309

THE ANCIENT MONUMENTS AND
ARCHAEOLOGICAL AREAS ACT 1979

~~1541~~
Entry in the Schedule of Monuments

9
2002

Re: The Monument known as
Nine Stones, stone circle, Ninestone Rig

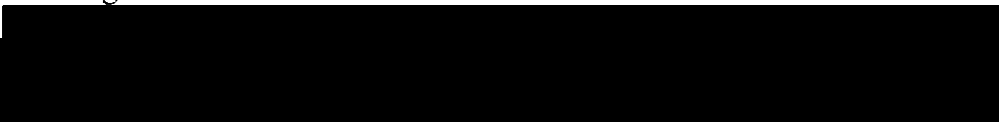
in the Parish of Castleton and
County of Roxburgh


Search Sheet No: 2891 (34 S of S)

Historic Scotland
Longmore House
Salisbury Place
Edinburgh

MFA10881

THE ANCIENT MONUMENTS AND ARCHAEOLOGICAL AREAS ACT 1979
ENTRY IN THE SCHEDULE OF MONUMENTS

The monument known as Nine Stones, stone circle, Ninestone Rig comprises a stone circle, a ritual monument dating from the Neolithic period. The stone circle lies at around 280m OD on a south-facing hill slope overlooking the valley of the Roughley Burn as it heads towards its confluence with the Hermitage Water. The area to be scheduled is a circle 30m in diameter centred on the circle. The monument, which lies in the Parish of Castleton and the County of Roxburgh as shown outlined in red on the Plan annexed and executed as relative hereto 

 is hereby included in the Schedule of Monuments appearing to the Scottish Ministers to be of national importance compiled and maintained by them under section 1(1) of the Ancient Monuments and Archaeological Areas Act 1979.

Subscribed by Frank James Lawrie, Director of Heritage Policy with Historic Scotland, being an officer of the Scottish Ministers at Edinburgh on the 23rd day of January Two thousand and two, before this witness Lesley Macdonald, of Longmore House, Salisbury Place, Edinburgh.

 Director of Heritage Policy

Register on behalf of the Scottish Ministers in the Register of the County of Roxburgh.


An Officer of the Scottish Ministers

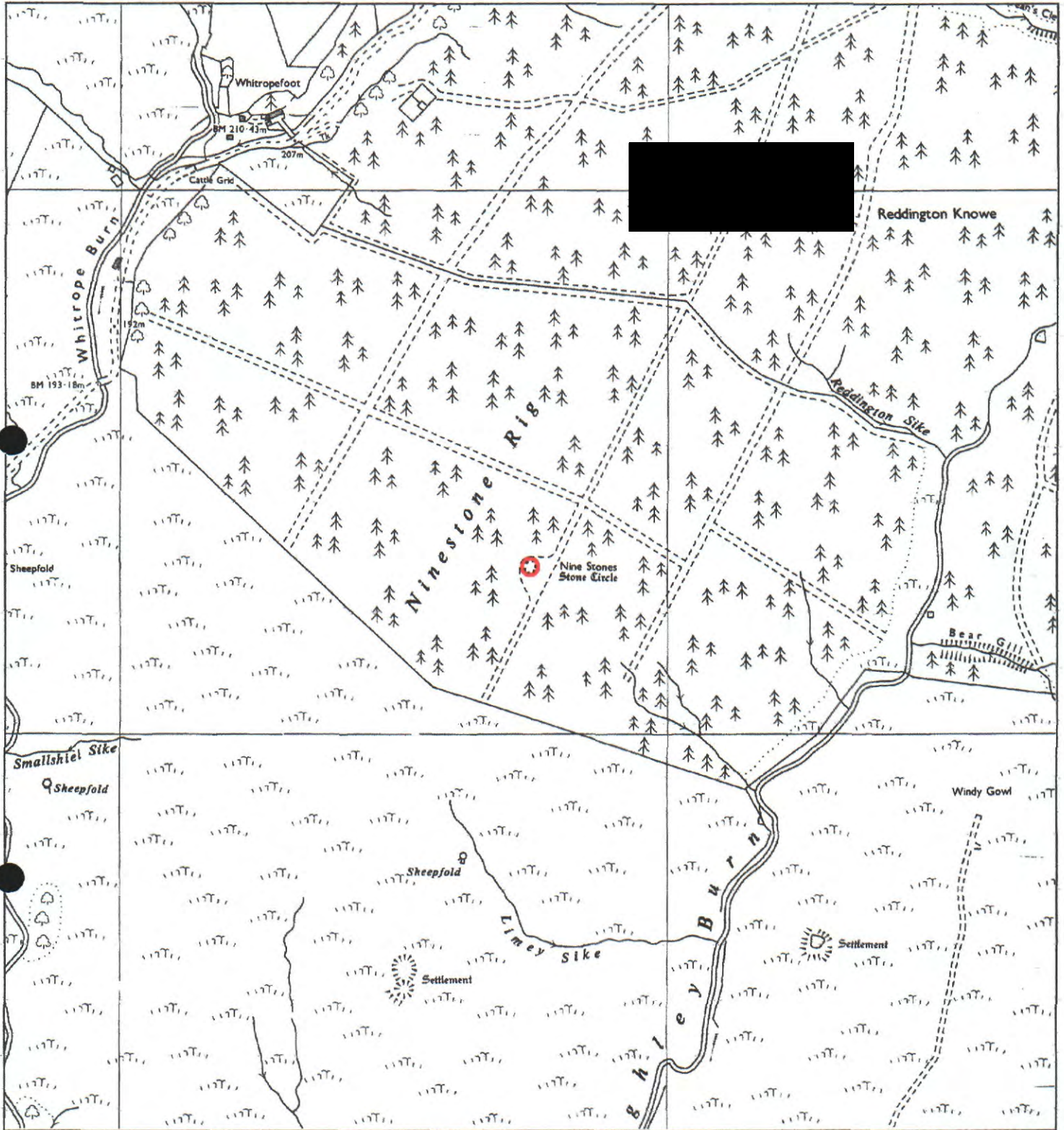
REGISTERS OF SCOTLAND
GENERAL REGISTER OF SASINES
COUNTY OF ROXBURGH
FICHE 36 FRAME 15
PRESENTED AND RECORDED ON

27 MAR 2002

ROX 0 2 3 6 MFA11281

15

This is the plan referred to in the entry in the Schedule affecting
 Nine Stones, stone circle, Ninestone Rig,
 dated: 23/1/02 and is signed as relative thereto.



Nine Stones, stone circle, Ninestone Rig

Castleton Parish

Scheduled Area



MapSheet: NY59NW

N



Scale 1:10,000

100 0 100 200 300 400 500 Meters

This map is reproduced from the OS map by Historic Scotland with the permission of The Controller of Her Majesty's Stationery Office, © Crown copyright. Unauthorised reproduction infringes Crown Copyright and may lead to prosecution or civil proceedings. Licence No. GD 03135G0014.