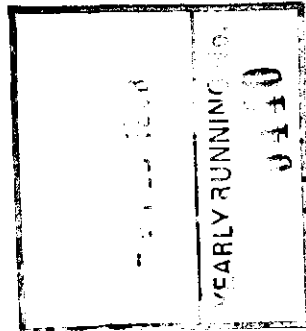


Ross

THE ANCIENT MONUMENTS AND
ARCHAEOLOGICAL AREAS ACT 1979

Amended Entry in the Schedule of
Monuments



1997

Re: The Monument known as Knock Farril,
fort, Knockfarrel, Fodderty

in the Parish of Fodderty and
County of Ross and Cromarty

17

Search Sheet No:

Solicitor
to the Secretary of State
for Scotland
Victoria Quay
Edinburgh

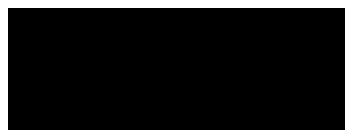
has 0616

MFA07768

THE ANCIENT MONUMENTS AND ARCHAEOLOGICAL AREAS ACT 1979
AMENDED ENTRY IN THE SCHEDULE OF MONUMENTS

The entry in the Schedule of monuments appearing to the Secretary of State for Scotland to be of national importance compiled and maintained by him under Section 1(1) of the above Act in respect of the monument known as Knock Farril, fort, Knockfarrel, Fodderty, dated 19 December 1969 and recorded in the Division of the General Register of Sasines for the County of Ross and Cromarty on 10 June 1970 is hereby in accordance with the provisions of section 1(5) of the above Act amended to describe the area of the scheduled monument as being irregular on plan, with maximum dimensions of 420m between the extreme WSW and ENE points by 140m NNW-SSE, to include the fort and the two enclosures and an area around in which evidence for the construction and occupation of the monument may be preserved shown delineated in red on the plan annexed and executed as relative hereto.

Given under the Seal of the Secretary of State for Scotland



Assistant Secretary
Date 6 March 1997

Historic Scotland
Longmore House
Salisbury Place
EDINBURGH
EH9 1SH

Register on behalf of the Secretary of State for Scotland in the Register of the County of Ross and Cromarty.



Solicitor, Edinburgh, Agent

ROS 9 8 0 2 9

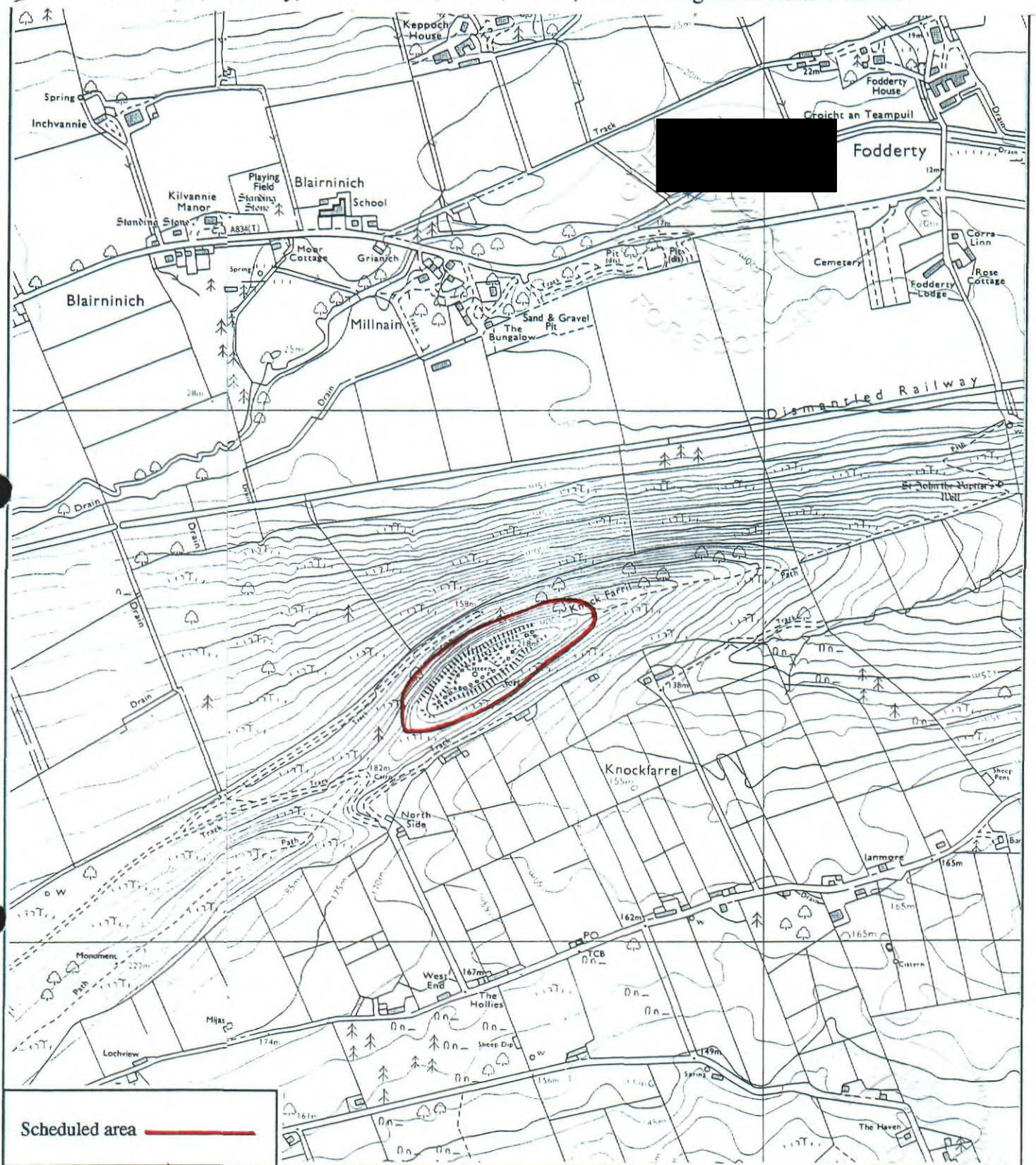
28

MFA07868

REGISTERS OF SCOTLAND
GENERAL REGISTER OF SASINES
COUNTY OF ROSS & CROMARTY
FICHE 29 FRAME 28
PRESENTED & RECORDED ON - 2 FEB 1998

JP

This is the plan referred to in the amended entry in the Schedule affecting Knock Farril, fort, Knockfarrel, Fodderty, dated *6 March 1997* and is signed as relative thereto.



Scheduled area ———

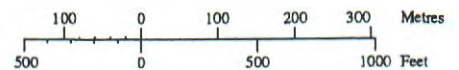
**Knock Farril, fort, Knockfarrel,
Fodderty**

Fodderty Parish



Sheet: NH55NW

Scale 1:10,000



© Crown copyright reserved

29

ROS 9 8 0 2 9