

ABN

15599

23 FEB 1999
EARLY TISSUE No. 1315

579

16

THE ANCIENT MONUMENTS AND
ARCHAEOLOGICAL AREAS ACT 1979

Entry in the Schedule of Monuments

~~40~~
35

1998

Re: The Monument known as
Logie Newton, kerb cairns 700m NW of

in the Parish of Auchterless and
County of Aberdeen

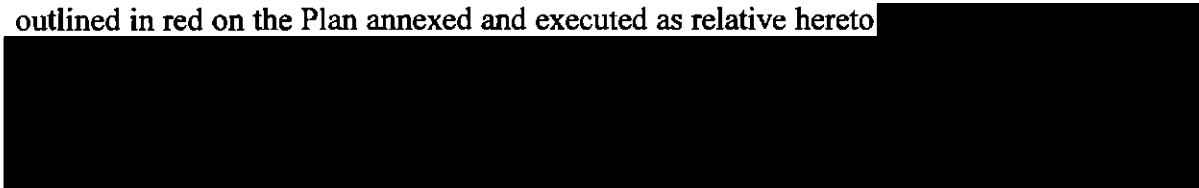
Search Sheet No: 15599

Solicitor
to the
Secretary of State
for Scotland
Victoria Quay
Edinburgh

MFA00482

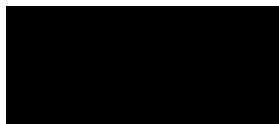
THE ANCIENT MONUMENTS AND ARCHAEOLOGICAL AREAS ACT 1979
ENTRY IN THE SCHEDULE OF MONUMENTS

The monument known as Logie Newton, kerb cairns 700m NW of comprises a group of three burial cairns with substantial kerbs (mainly of white quartz) and the area around and between these cairns. The area to be scheduled is rectangular and measures 70m WSW to ENE by 40m transversely, to include the cairns and any features associated with their construction and use which may survive between and around them. The above-ground element of the field boundary wall within the scheduled area is specifically excluded. The monument, which lies in the Parish of Auchterless and the County of Aberdeen as shown outlined in red on the Plan annexed and executed as relative hereto



is hereby included in the Schedule of Monuments appearing to the Secretary of State for Scotland to be of national importance compiled and maintained by him under section 1(1) of the Ancient Monuments and Archaeological Areas Act 1979.

Given under the Seal of the Secretary of State for Scotland.



Assistant Secretary
Date 16 October 1998

Historic Scotland
Longmore House
Salisbury Place
EDINBURGH
EH9 1SH

Register on behalf of the Secretary of State for Scotland in the Register of the County of Aberdeen.



Solicitor, Edinburgh, Agent

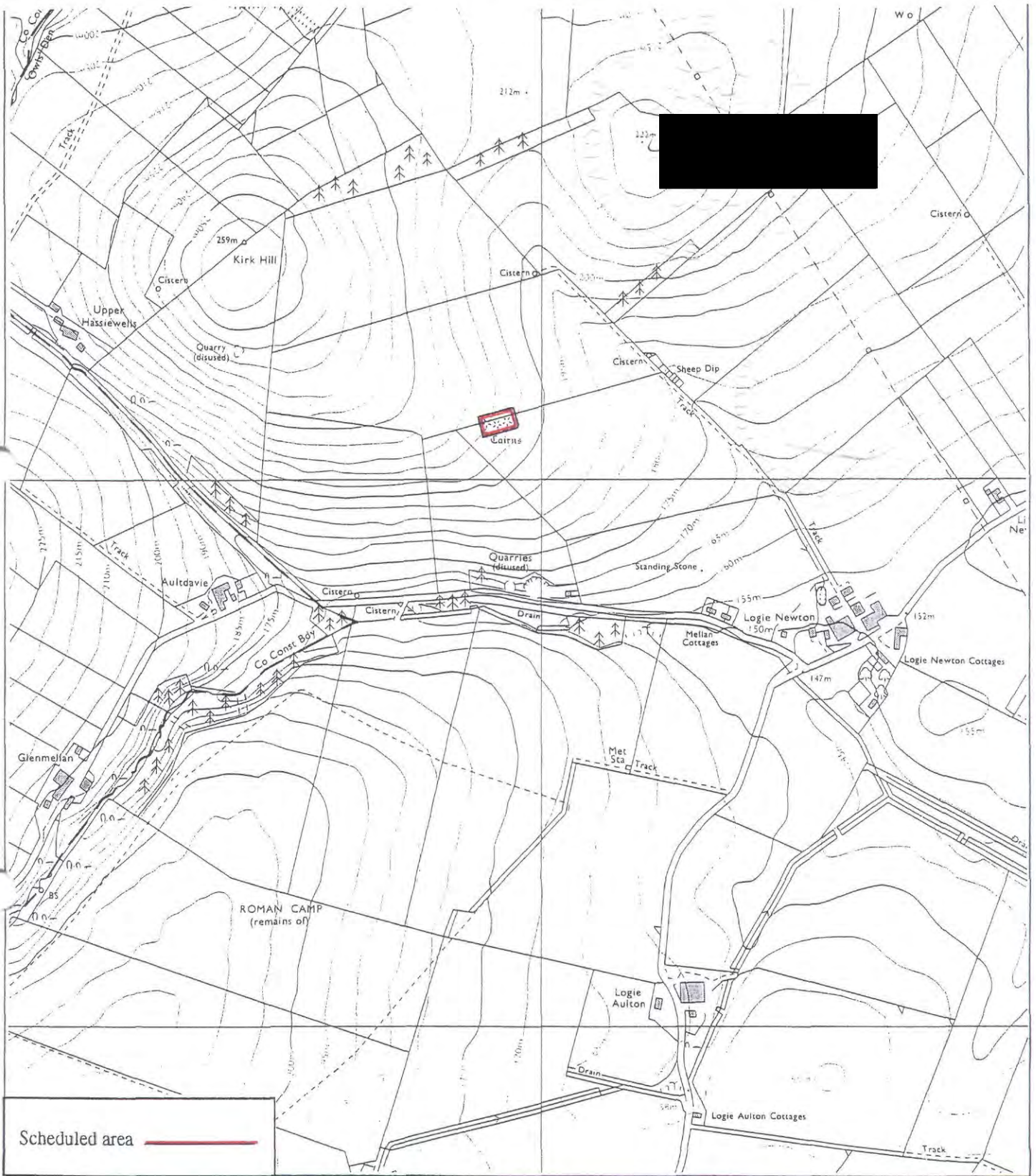
MFA00582

REGISTERS OF SCOTLAND
GENERAL REGISTER OF SASINES
COUNTY OF ABERDEEN
FICHE 60 FRAME 16
PRESENTED & RECORDED ON 23 FEB 1999

ABN 99 60

16

This is the plan referred to in the entry in the Schedule affecting Logie Newton, kerb cairns 700m NW of, dated 16 October 1998 and is signed as relative thereto.



<p>Logie Newton, kerb cairns 700m NW of</p> <p>Auchterless Parish</p>	<p style="text-align: center;">↑ N</p> <p>Sheet: NJ63NE</p>	<p>Scale 1:10,000</p> <p style="text-align: center;">100 0 100 200 300 Metres 500 0 500 1000 Feet</p> <p>© Crown copyright reserved</p>
---	---	---

ABN 99 60