

**FIGURE 1**  
**SITE LOCATION PLAN**



Consulting Geo-environmental  
Engineers

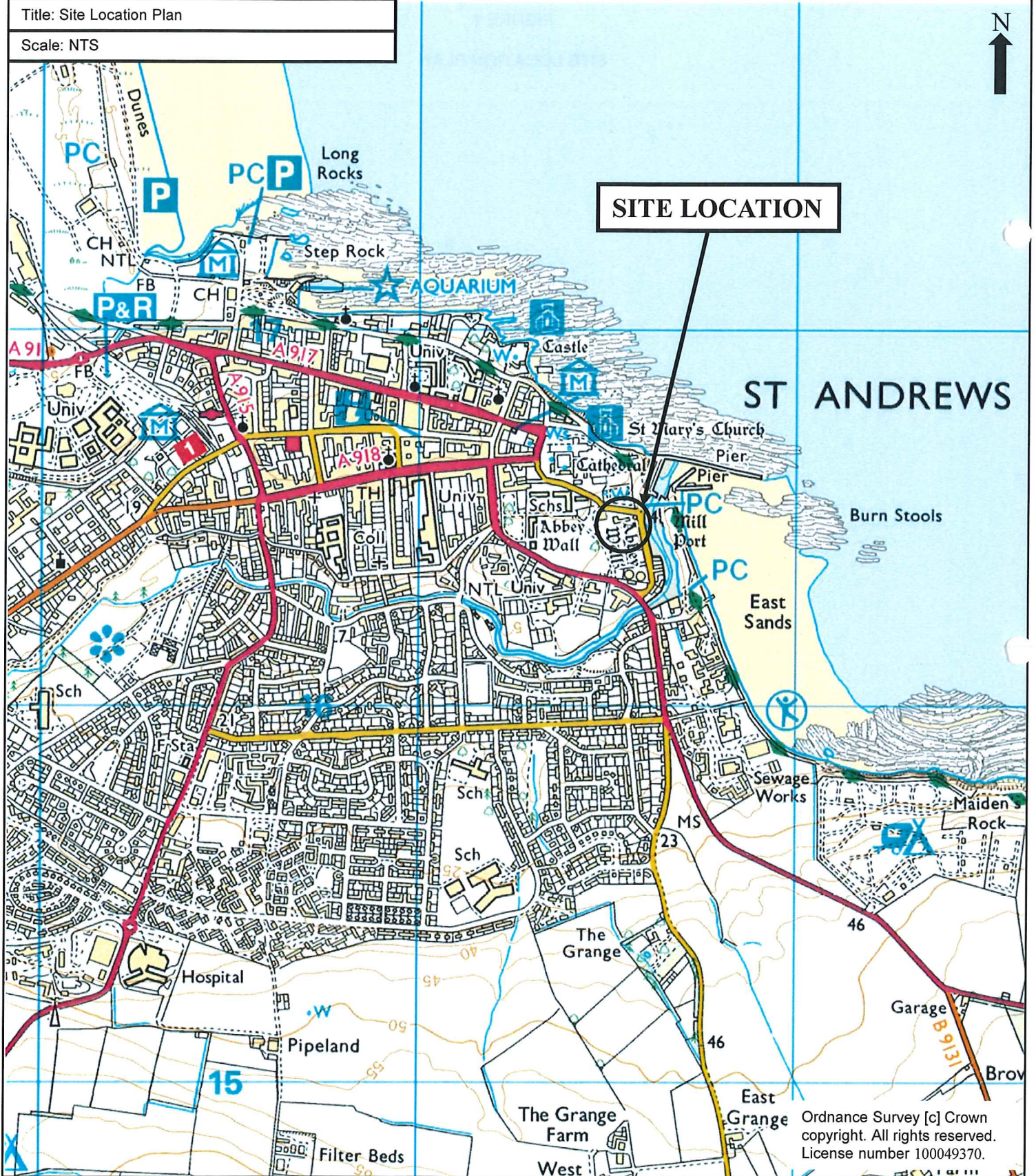
Burnbank House  
Pencailand  
East Lothian  
EH34 5HB  
www.geovia.co.uk

Site: St Leonards School, St Andrews

Ref: 1603-10

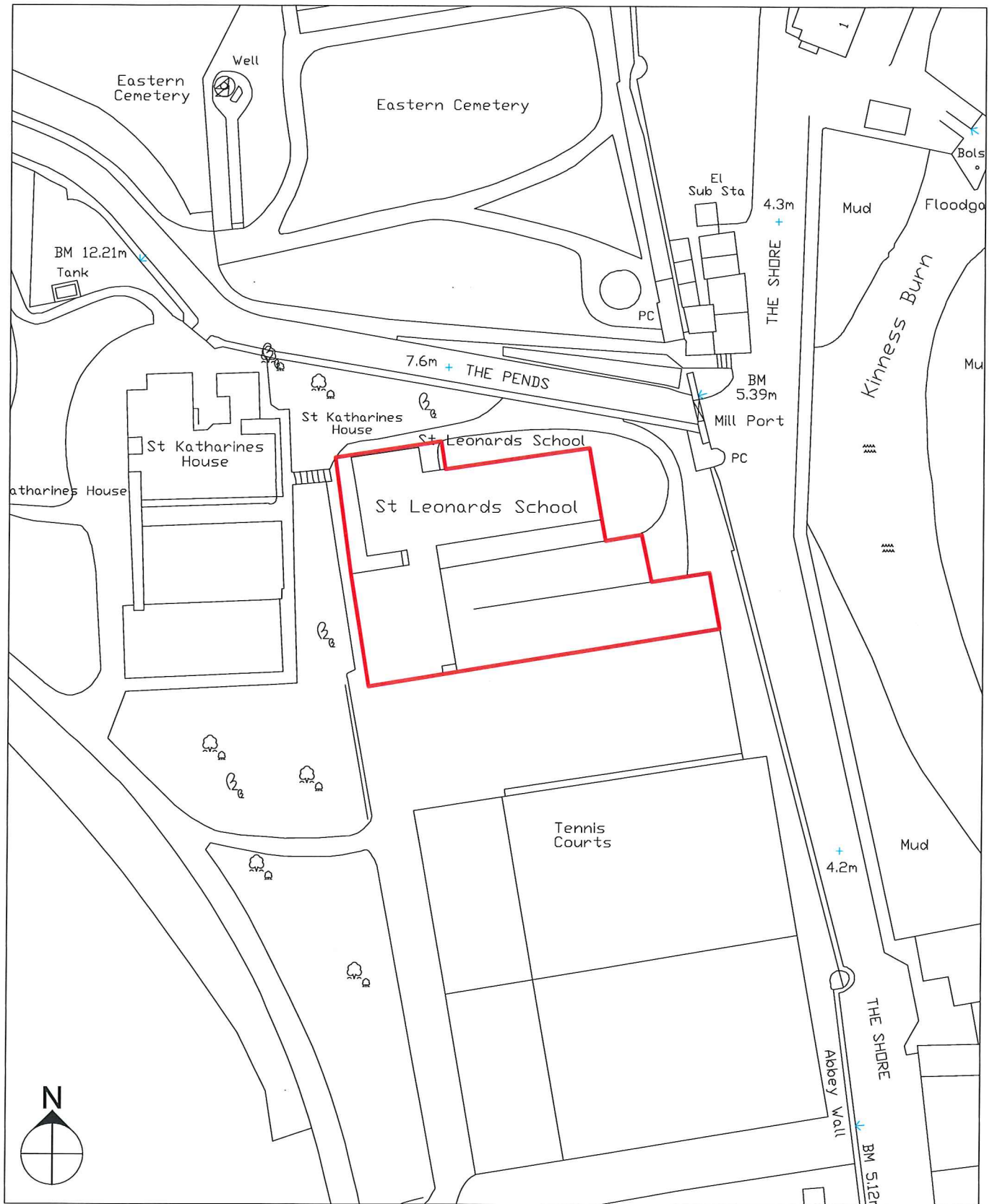
Title: Site Location Plan

Scale: NTS



Ordnance Survey [c] Crown  
copyright. All rights reserved.  
License number 100049370.

**FIGURE 2**  
**SITE LAYOUT PLAN**



**geovia**

Consulting Geo-environmental Engineers

Burnbank House  
Pencailand  
East Lothian  
EH34 5HB  
www.geovia.co.uk

PROJECT

PROPOSED SPORTS CENTRE  
ST LEONARDS SCHOOL, ST ANDREWS

TITLE

SITE LAYOUT PLAN (EXISTING)

DATE

April 2016

DRAWN

RK

APPROVED

NSM

SCALE

1:1,000

DRAWING No.

1603-10 - 02

REV

**FIGURE 3**  
**PROPOSED DEVELOPMENT LAYOUT PLAN**





LDN Architects has been invited to participate in submitting an outline proposal for new sports facility at St Leonards School. This is our initial response to the written design brief and the 30% design meeting at the School with the Headmaster and Bursar.

**SITE**  
Located in the heart of the historic University town of St Andrews, the site is bounded by the historic Cathedral ruins and a number of listed buildings both within the campus and beyond its perimeter.

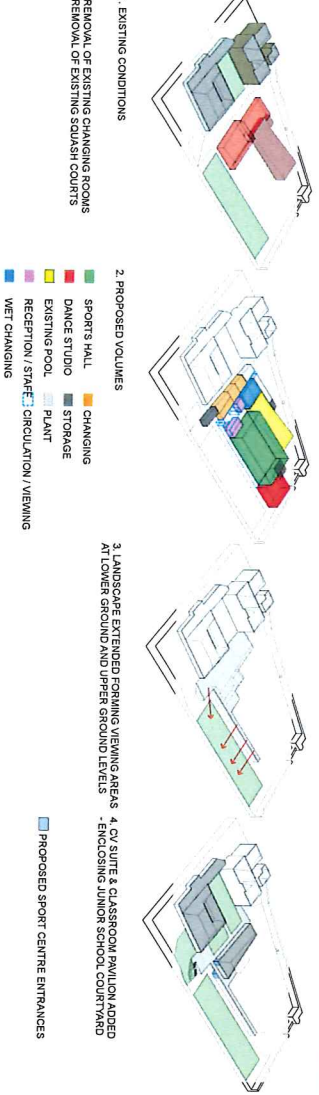
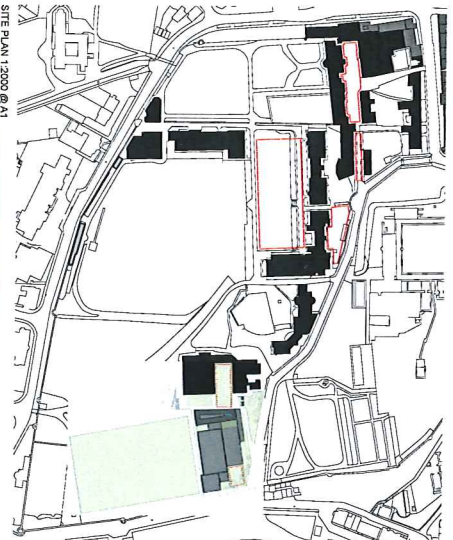
With the creation of such large new volumes, necessary to the completion of the new games hall and dance studio, careful handling of the building mass is of utmost importance in this sensitive location. Therefore the games hall, pool and dance studio are placed adjacent to the existing swimming pool where its substantial volume can be partially screened by the building (where it can share storage facilities and circulation) allowing the building form to step down to the stone boundary wall.

The majority of the remaining accommodation including the main entrance is located on the ground floor of the building under a landscaped roof taking advantage of the existing stepped nature of the site, with a retaining wall linking the new building to the existing swimming pool. It forms a podium or base for the new building.

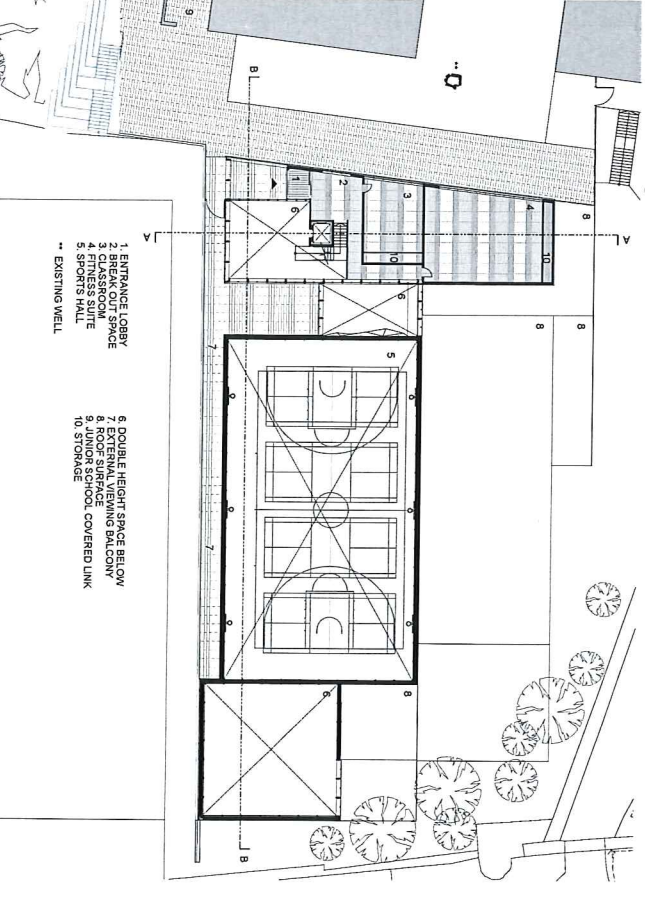
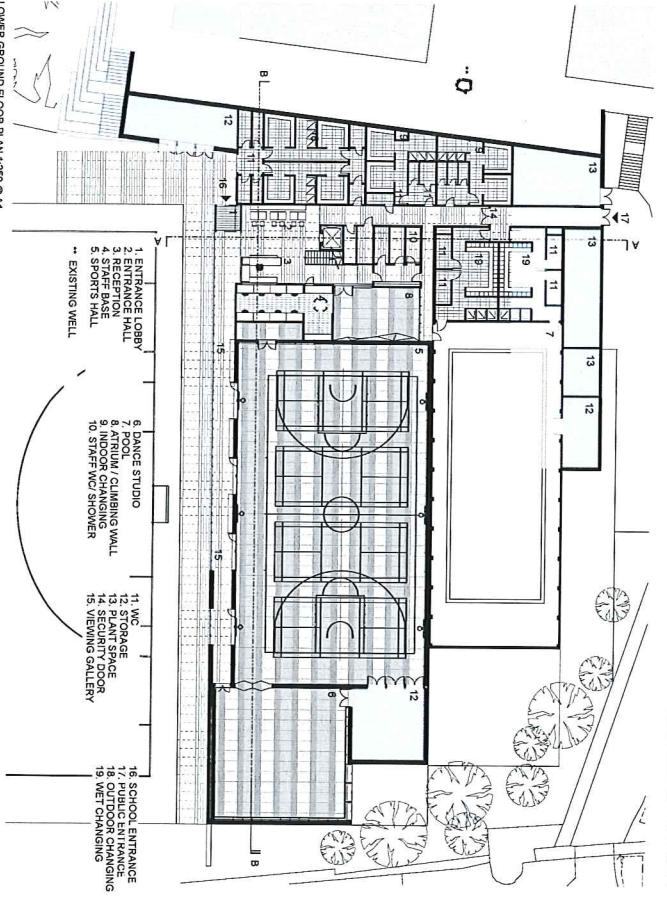
The three storey and classroom, along with a first floor entrance, are housed in a pavilion that specifically addresses the 40th Internal School and comprises the missing side of the courtyard.

As Internal School comprises the missing side of the courtyard, the building is designed to be a central element and bring natural daylight and ventilation to a large number of classrooms. External viewing areas across the all weather hockey and tennis pitches.

General consideration has been given to incorporating the existing squash courts however it is our initial view that they better use can be made of the area of the site if the building is removed.



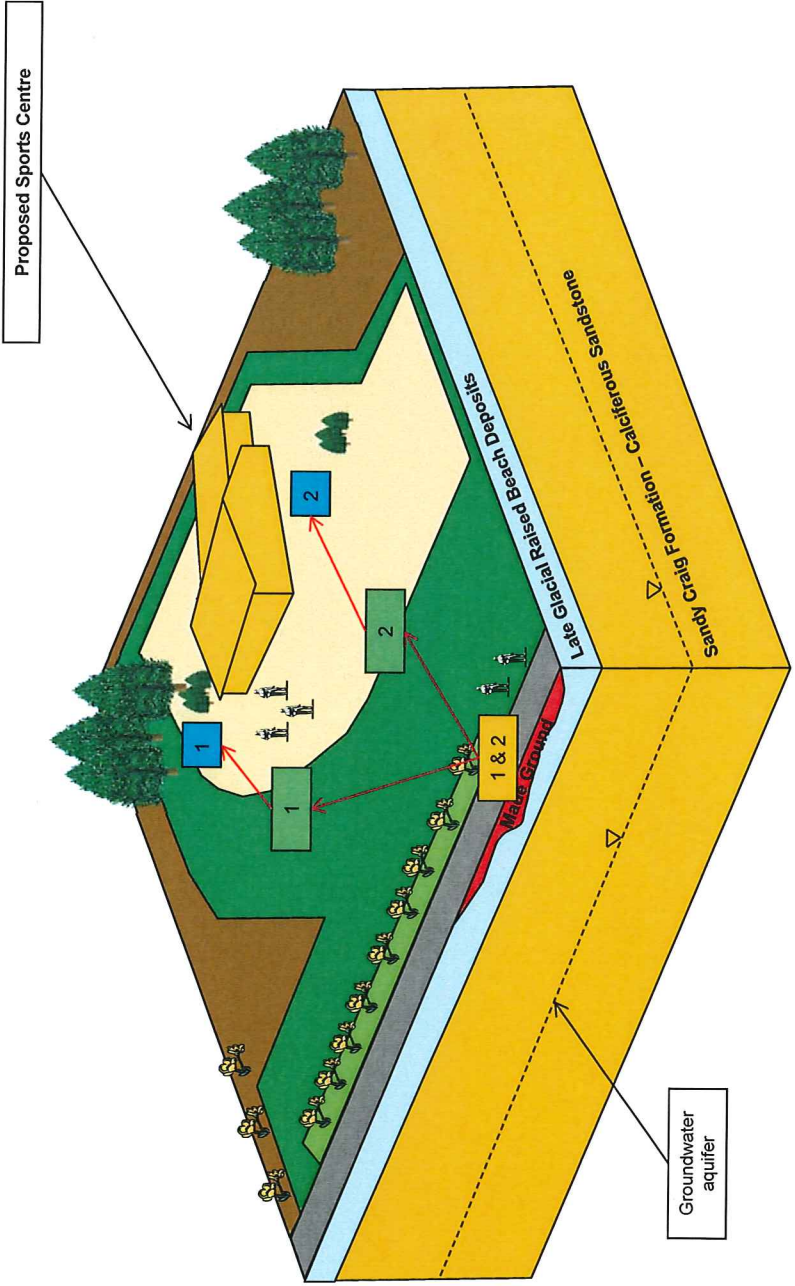
- 1. EXISTING CONDITIONS
  - 2. PROPOSED VOLUMES
  - 3. LANDSCAPE EXTENDED FORMING VIEWING AREAS AT LOWER GROUND AND UPPER GROUND LEVELS
- SPORTS HALL
  - DANCE STUDIO
  - EXISTING POOL
  - RECEPTION / STAFF
  - WET CHANGING
  - CHANGING
  - STORAGE
  - PLANT
  - CIRCULATION / VIEWING
  - PROPOSED SPORT CENTRE ENTRANCES
  - ENCLOSING JUNIOR SCHOOL COURTYARD



**FIGURE 4**  
**PRELIMINARY CONCEPTUAL SITE MODEL**

Potential Sources	Potential Pathways	Potential Receptors
1 No significant on-site sources identified. Made ground soils likely to be present associated with the existing swimming pool development.	1 Inhalation of ground gas/ accumulation within the built environment: Future site end users.	1 Human health: Future site end users, pupils, staff, visitors, and maintenance workers.
2 Off site sources including the historical Abbey Mill, Shore Mill approximately 30m and 20m from site and Gasometers outwith a 70m radius.	2 Buried services / buried foundation attack.	2 Buried foundations and new services.

Limited potential sources identified from historical review.  
 Limited potential pathways identified based on proposed development layout.



**Notes / Key / Explanation**

- Potential linkages
- Made Ground
- Potential contaminants in Made Ground
- Dermal contact / ingestion / Inhalation
- Site end users & general public
- Strata descriptions
- Potential sources
- Potential pathways
- Potential receptors



Burnbank House  
 Pencalland  
 East Lothian  
 EH20 5RB  
 www.geovia.co.uk

**Client**  
 St Leonards School, St Andrews

**Project**  
 Proposed Sports Centre Development

**Title**  
 Pre-conceptual Site Model

Scale@size	Issue
NTS	Final
Design/Drawn	Date
RK	May 2016
Project No.	Figure No.
1603-10	4