

Location and pictures of loose splinters to be collected for the timber species identification



PALACE: North East Range



Fig 1: rafter



Fig 2: rafter



Fig 3: collar



Fig 4: collar



Fig 5: sarking



Fig 6: sarking



Fig 7: strut



Fig 8: strut

PALACE: North West Corner



Fig 9: common rafter



Fig 10: common rafter



Fig 11: purlin



Fig 12: sarking



Fig 13: sarking

PALACE: West Range



Fig 14: rafter



Fig 15: rafter

PALACE: Southwest Range



Fig 16: rafter



Fig 17: rafter



Fig 18: sarking



Fig 19: sarking

KING'S OLD BUILDINGS: Northwest Range



Fig 20: rafter



Fig 21: rafter



Fig 22: upper collar

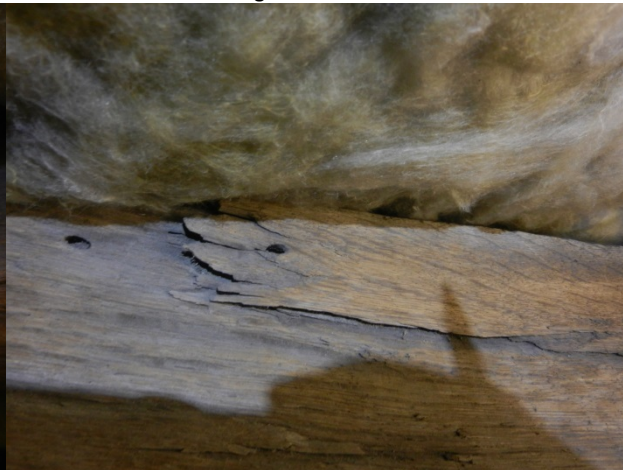


Fig 23: upper collar