

The Inventory of Historic Battlefields

The Battle of Philiphaugh

Designation Record

The Inventory of Historic Battlefields is a list of nationally important battlefields in Scotland. A battlefield is of national importance if it makes a contribution to the understanding of the archaeology and history of the nation as a whole, or has the potential to do so, or holds a particularly significant place in the national consciousness. For a battlefield to be included in the Inventory, it must be considered to be of national importance either for its association with key historical events or figures; or for the physical remains and/or archaeological potential it contains; or for its landscape context. In addition, it must be possible to define the site on a modern map with a reasonable degree of accuracy.

The aim of the Inventory is to raise awareness of the significance of these nationally important battlefield sites and to assist in their protection and management for the future. Inventory battlefields are a material consideration in the planning process. The Inventory is also a major resource for enhancing the understanding, appreciation and enjoyment of historic battlefields, for promoting education and stimulating further research, and for developing their potential as attractions for visitors.

Contents

Name	Date of Addition to Inventory
Alternative Name(s)	Date of Last Update
Date of Battle	Overview and Statement of
Local Authority	Significance
NGR Centred	Inventory Boundary

Inventory of Historic Battlefields

PHILIPHAUGH

Alternative Names: None

13 September 1645

Local Authority: Scottish Borders

NGR centred: NT 444 283

Date of Addition to Inventory: 21 March 2011

Date of last update: 14 December 2012

Overview and Statement of Significance

Philiphaugh is significant as it is the final battle of the Marquis of Montrose's Royalist campaign in 1644 and 1645, and was the only defeat he suffered during it. Philiphaugh effectively destroys Montrose's army and essentially ends any organised Royalist ambitions north of the border.

Philiphaugh was a major defeat for the Scottish Royalist army in the Wars of the Three Kingdoms and signalled the end of the Marquis of Montrose's campaign in Scotland. Montrose had raised the royal standard in Scotland in 1644, in an attempt to secure the country for the king by force of arms. He had won a string of six victories and had crippled the ability of the Covenanters (Scottish Presbyterians opposed to interference by the Stuart Kings in the affairs of the Church of Scotland) to counter him. However, by September his attempts to raise sufficient Lowland forces, or maintain the numbers of his existing troops to sustain his campaign, had failed.

After the crushing defeat at Kilsyth (15 August 1645) no effective Covenanter army remained in Scotland. Consequently, thousands of experienced troops were recalled by the Scottish Government from England and marched north to meet Montrose's depleted Royalists troops positioned in the Borders. The ill-prepared and out numbered Royalists were quickly defeated by the Government troops at Philiphaugh and the captured soldiers, their families and servants were swiftly executed within a short distance of the battlefield. The Royalist defeat signalled the end of Montrose's campaign in Scotland and effectively marked the end of the Civil War in Scotland. The victory of the Covenanters was secured the following year with the surrender of King Charles to a Covenanter army in England.

Inventory Boundary

The Inventory boundary defines the area in which the main events of the battle are considered to have taken place (landscape context) and where associated physical remains and archaeological evidence occur or may be expected (specific qualities). The landscape context is described under *battlefield landscape*: it encompasses areas of fighting, key movements of troops across the landscape and other important locations, such as the positions of camps or vantage points. Although the landscape has changed since the time of the battle, key characteristics of the terrain at the time of the battle can normally still be identified, enabling events to be more fully

Inventory of Historic Battlefields

understood and interpreted in their landscape context. Specific qualities are described under *physical remains and potential*: these include landscape features that played a significant role in the battle, other physical remains, such as enclosures or built structures, and areas of known or potential archaeological evidence.

The Inventory boundary for the Battle of Philiphaugh is defined on the accompanying map and includes the following areas:

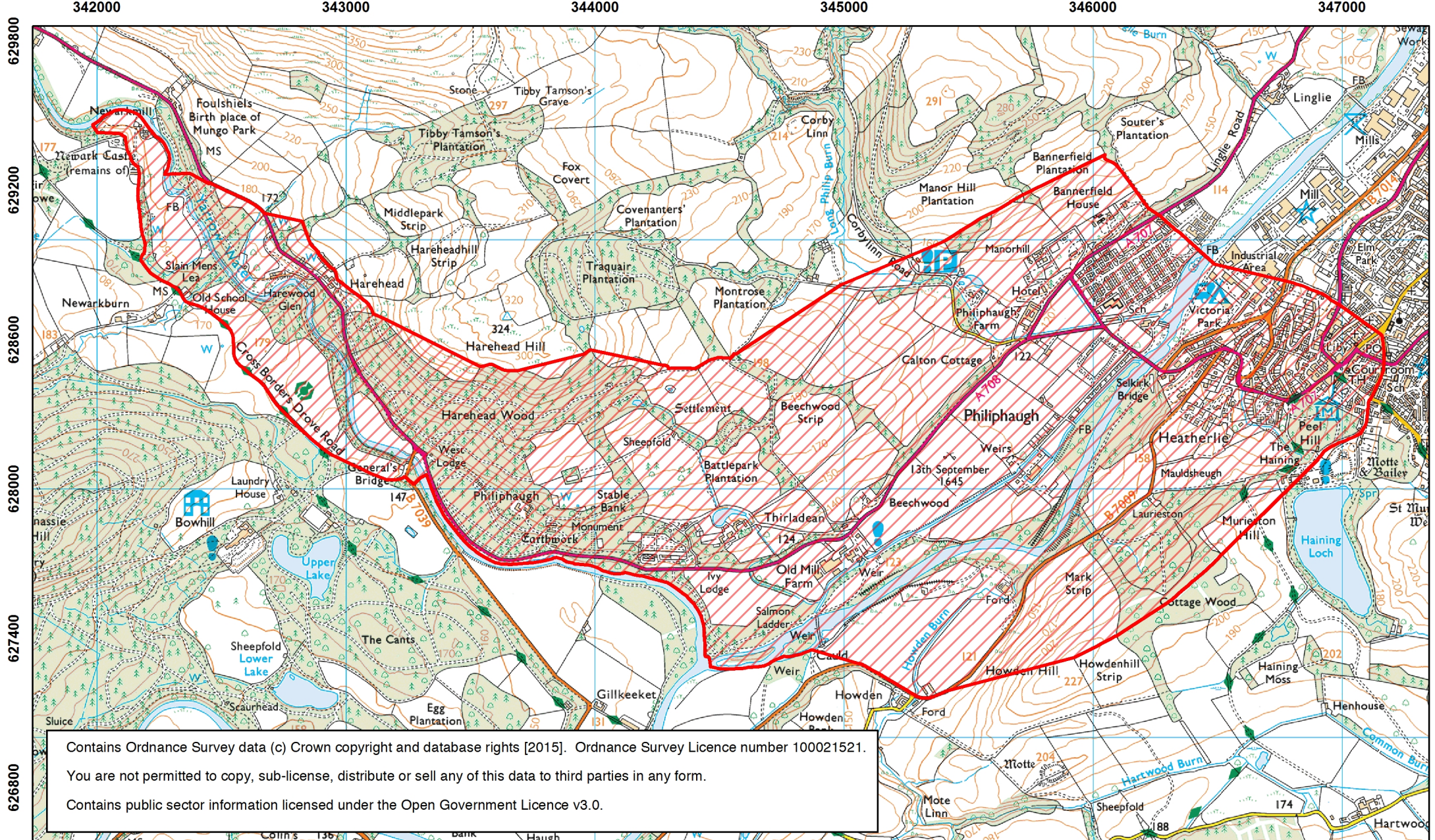
- The modern A708 and lands to the north and south from the outskirts of Selkirk to Philiphaugh. The approach route of the Covenanters army and their advance on to the Royalist camp located in woodland beyond Philiphaugh.
- The area of enclosures at Philiphaugh as shown on Roy's 18th century map. Primary sources indicate that the main battle took place within enclosed ground on the haugh.
- Military findspots including Slain Men's Lea where burials were discovered in the 19th century and find-spots including silver plate, coins and bullets located throughout the defined area.
- Harewood Glen to Newark Castle. The probable route westward of the rout. Secondary sources indicate that the camp followers were taken to the castle prior to being slaughtered at Slain Men's Lea.
- The Covenanters Monument and earthworks at Harehead Wood. The Ballad of Philiphaugh states that the battle ended at Harehead Wood. The monument was erected in the woods in 1848 overlying an earthwork traditionally associated with the battle.
- The area to the south of the Etrick Water. The probable route of the flank attack by the Covenanters.
- The well preserved landscape of the battleground including the riverside land on the northern banks of the Etrick Water, the route of the Royalist rout to the west and the hill slopes to the north.

The Inventory of Historic Battlefields - Boundary

Philiphaugh

13 September 1645

Local Authority: Scottish Borders



Contains Ordnance Survey data (c) Crown copyright and database rights [2015]. Ordnance Survey Licence number 100021521.

You are not permitted to copy, sub-license, distribute or sell any of this data to third parties in any form.

Contains public sector information licensed under the Open Government Licence v3.0.

 Inventory of Historic Battlefields boundary

