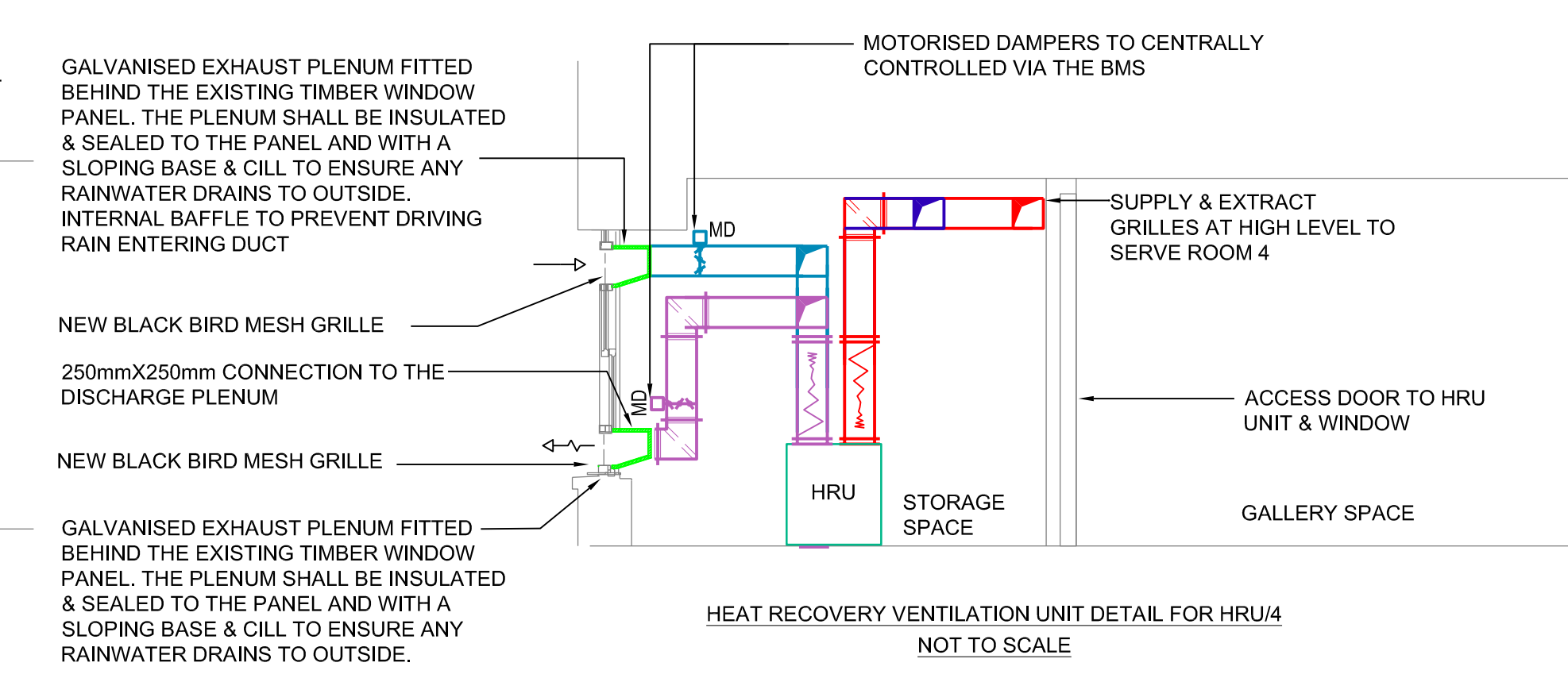
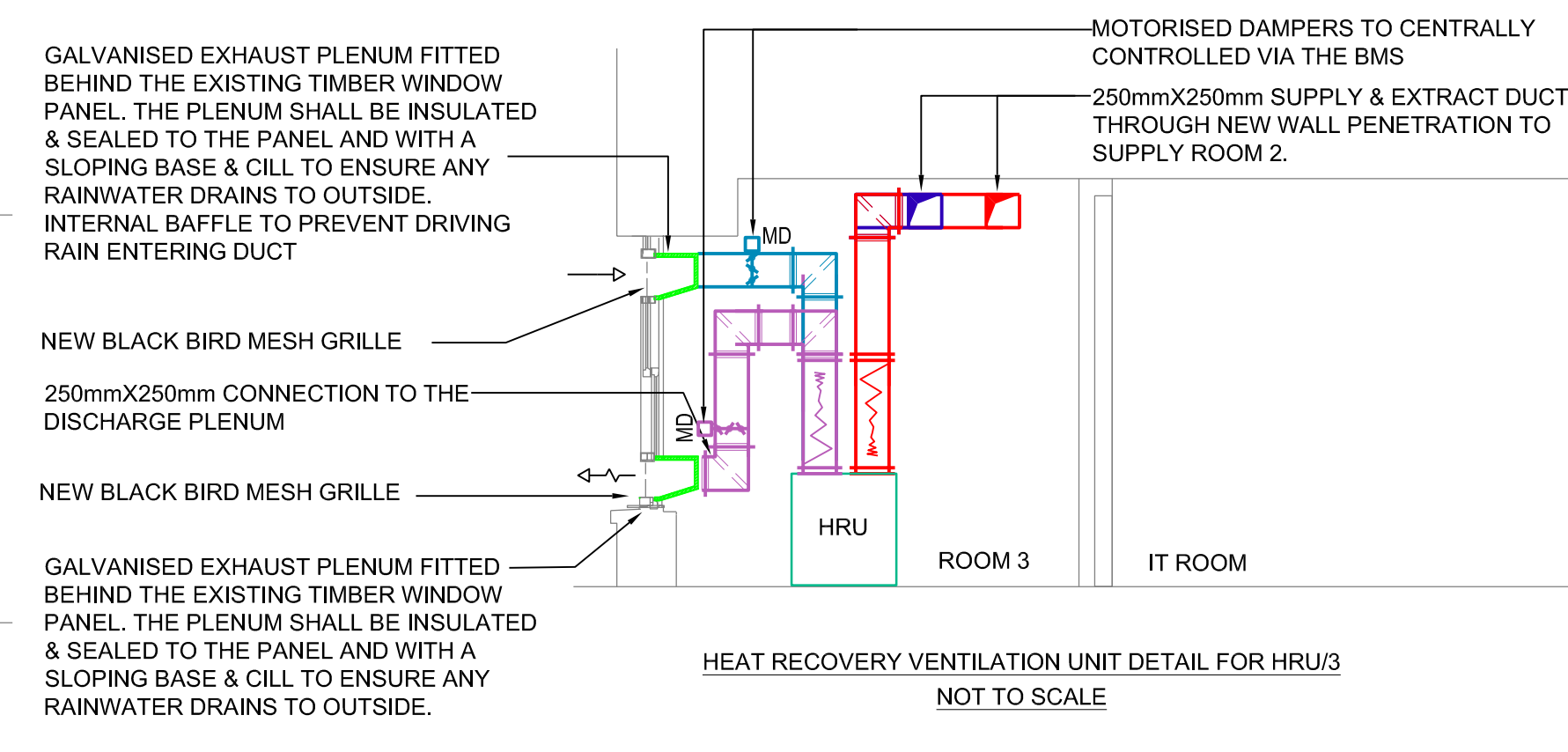
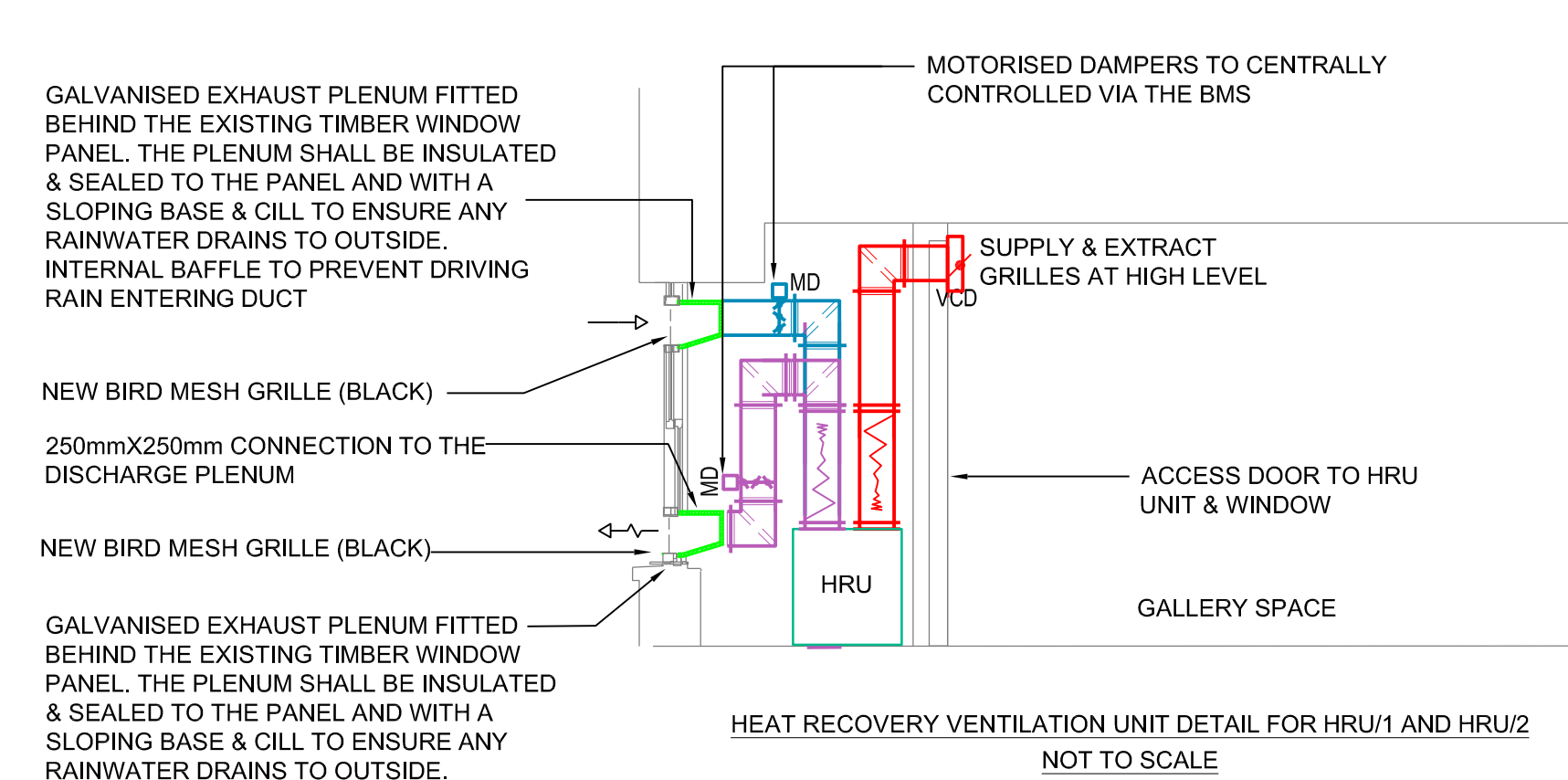
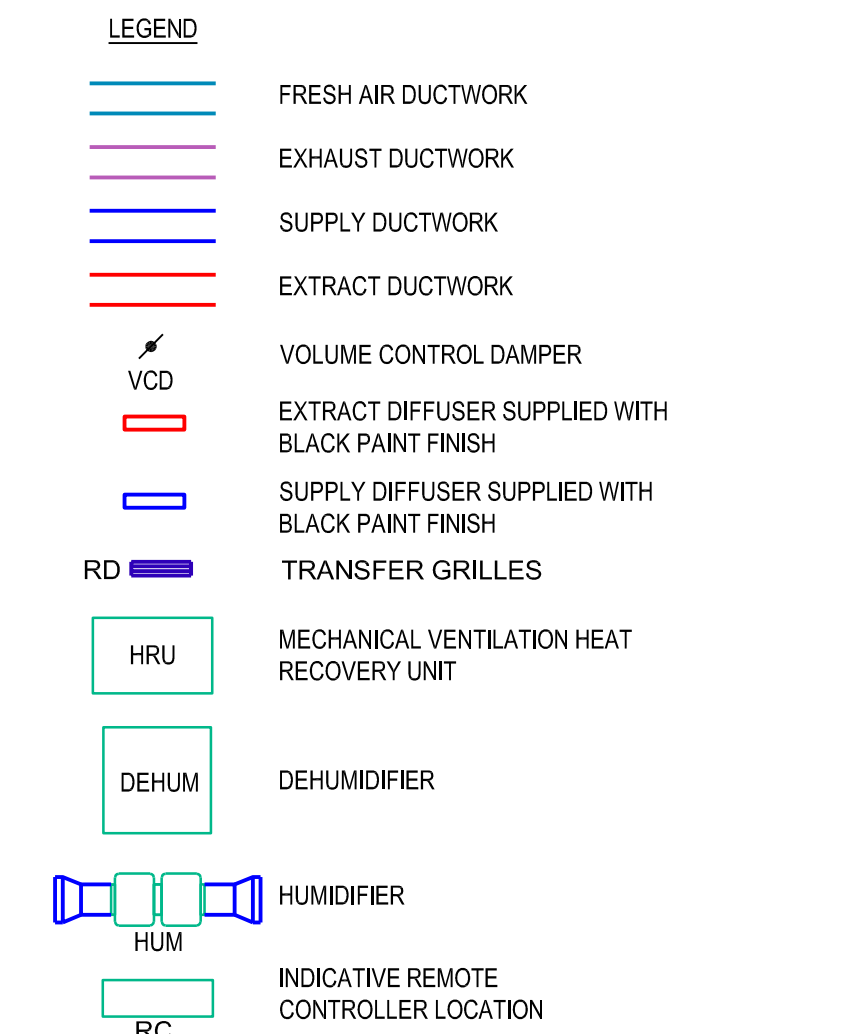


THIS DRAWING IS INDICATIVE AND REPRESENTS ONLY THE DESIGN INTENT, THE CONTRACTOR MUST PRODUCE FULLY CO-ORDINATED WORKING / INSTALLATION DRAWINGS AS REFERRED TO IN THE CONTRACT DOCUMENTATION

- GENERAL NOTES**
- DO NOT SCALE FROM THIS DRAWING. READ IN CONJUNCTION WITH ARCHITECT & STRUCTURAL ENGINEERS CURRENT CONSTRUCTION DRAWINGS, SPECIFICATION & ALL OTHER RELEVANT INFORMATION. FOR FULL SETTING OUT DETAILS REFER TO ARCHITECTS DRAWINGS.
 - ALL DIMENSIONS ARE IN MILLIMETRES UNLESS STATED OTHERWISE. ALL DIMENSIONS TO BE CHECKED ON SITE PRIOR TO ORDERING MATERIALS AND COMMENCEMENT OF WORKS.
 - DRAWINGS TO BE READ IN CONJUNCTION WITH SPECIFICATION, DOCUMENTATION, DRAWINGS & ALL RELEVANT BRITISH STANDARD DOCUMENTS.
 - ALL SERVICES SHOULD BE LABELLED TO BS 1710.
- VENTILATION SERVICES NOTES**
- ALL DUCTWORK TO BE MANUFACTURED & INSTALLED TO DW/144 SPECIFICATION FOR SHEET METAL DUCTWORK.
 - ALL BRANCHES TO INCORPORATE MULTI-BLADE TYPE VOLUME CONTROL DAMPERS.
 - ALL CONNECTIONS TO GRILLES TO BE AS PER MANUFACTURERS STANDARD CONNECTION. REFER TO SCHEDULES FOR DETAILS OF FINAL CONNECTION SIZES. THE CONTRACTOR SHALL ALLOW FOR ALL DUCT OFFSETS & BENDS AROUND BEAMS.
 - ALL GRILLE LENGTHS AND WIDTHS TO BE CHECKED AGAINST SITE MEASUREMENTS PRIOR TO ORDERING. THE CONTRACTOR SHOULD MAKE ALLOWANCES FOR SITE SIZED BLANK FILLER PIECES TO BE INSTALLED BETWEEN EACH GRILLE AND AT THE START AND END OF EACH RUN TO ENSURE NO SECTION OF THE COFFER DUCT IS LEFT OPEN TO THE SPACE. THE FINISH OF THE FILLER PIECES SHOULD MATCH THE GRILLE FINISH.
 - ALL DUCTS PASSING THROUGH CAVITY BARRIERS TO INCORPORATE FIRE DAMPER WITH ACCESS DOOR ON BOTH SIDES OF BARRIER.
 - GENERAL SUPPLY & EXTRACT DUCTWORK TO BE INSULATED & PROTECTED WITH FOIL FACE FINISH. ALL DUCTWORK WITHIN PLANTROOMS TO BE PROTECTED WITH ALUMINIUM HAMMER CLAD PROTECTION.
 - ALL EQUIPMENT, DUCTWORK, GRILLES & PLENUM BOXES TO BE INDEPENDENTLY HUNG FROM STRUCTURE.
 - FLEXIBLE DUCTWORK SHOULD NOT EXCEED 500mm IN LENGTH ON EACH GRILLE.
 - ALL BENDS TO BE SWEEPED WHERE POSSIBLE, AND INCORPORATE TURNING VANES WHERE NOT.



P3	ISSUED FOR SCOTTISH MONUMENT CONSENT	CD	CD	MRN	1120
P2	ISSUED FOR SCOTTISH MONUMENT CONSENT	CD	CD	MRN	1020
P1	ISSUED FOR SCOTTISH MONUMENT CONSENT	GK	GK	CD	1020
REV	DESCRIPTION	BY	CHK	APP	DATE

Project Status: **INFORMATION**

h HARLEY HADDOW
The Multi-disciplinary Engineering Consultancy
124-125 Princes Street
Edinburgh, EH2 4AD
T: 44 (0) 131 226 3331
E: edm@harleyhaddow.com
Edinburgh 1 London 1 Glasgow
harleyhaddow.com
Association for Consulting and Engineering Member Firm

Project: 302947
ROYAL SCOTS DRAGOON GUARDS MUSEUM

Drawing Title:
PROPOSED VENTILATION LAYOUT

Scale @ A1	Date	Engineer
1:50	SEP 2020	GK
Drawing No.	Revision	
2947-HAH-00-XX-DR-M-57-0100	P3	