



AMENDED ENTRY

5298

The Ancient Monuments and Archaeological Areas Act 1979

Amended entry in the schedule of monuments

Historic Environment Scotland in exercise of the powers conferred on it by section 1(1) of the Ancient Monuments and Archaeological Areas Act 1979 hereby amends the entry in the statutory schedule of monuments as set out below.

The monument known as **Morayston, palisaded enclosure 1km SW of** comprises the buried remains of a palisaded enclosure, which are prehistoric enclosures defined by one or more rows of closely-spaced timbers, probably dating to between 1500BC and 500AD. The monument is visible as a cropmark captured on oblique aerial photographs. There is also a slightly raised area on the ground surface. The monument lies about 45m above OD, just above a gentle slope falling north-northwest and less than 1.5km from the coast.

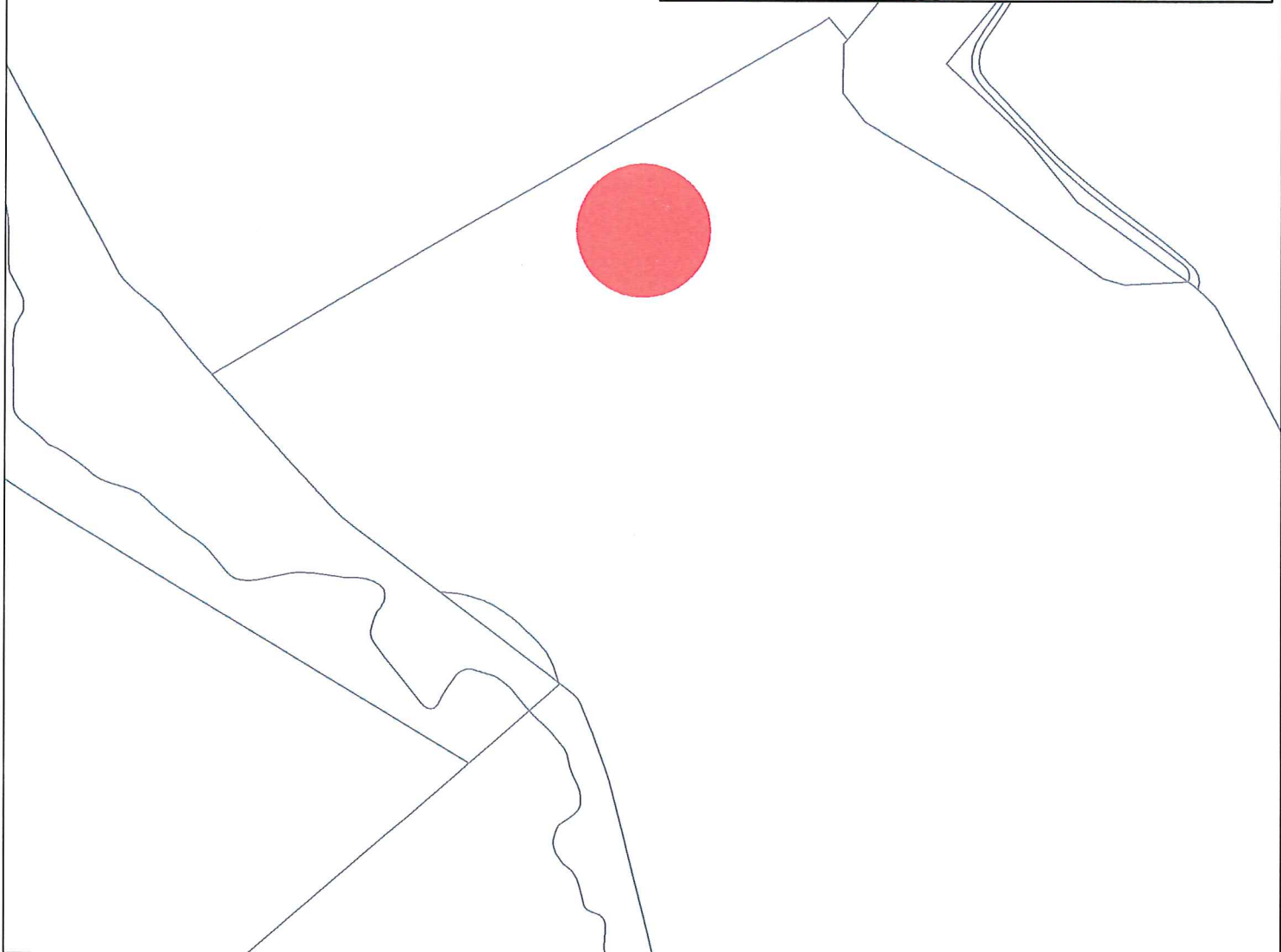
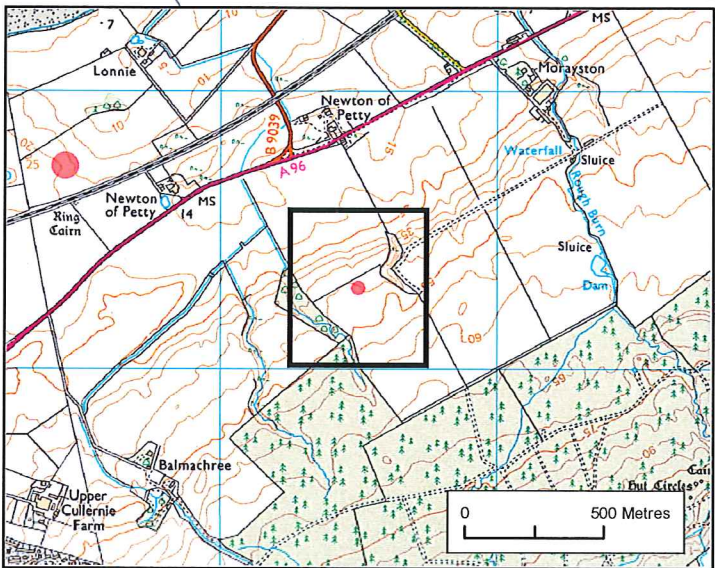
The scheduled area is circular, measuring 50 metres in diameter to include the remains described above and an area around them within which evidence relating to the monument's construction, use and abandonment is expected to survive.

The monument, which lies in the Parish of Petty and the County of Inverness as shown in red on the plan annexed and executed as relative hereto.

This entry supersedes the Entry in the Schedule of Monuments for the monument known then as **Morayston, ring-ditch 1200m SW of** as referred to in the Entry in the Schedule of Monuments by the Secretary of State for Scotland in respect of the monument dated 17 March 1992 and recorded in the General Register of Sasines for the County of Inverness on 28 August 1992.

Dated: 10 / 11 / 2016

This is the plan referred to in the entry in the Schedule affecting:
Morayston, palisaded enclosure 1km SW of



Designation Reference: SM5298
Morayston, palisaded enclosure 1km
SW of

Parish: Petty
Scheduled Area



N
Map Sheet:
NH74NW

0 25 50 75 100 125
m Scale: 1:2,500

Contains Historic Environment Scotland and Ordnance
Survey Data © Historic Environment Scotland © Crown
copyright and database rights 2016 Ordnance Survey
[100057073]

Ordnance Survey Data
You are permitted to use this data solely to enable you to
respond to, or interact with, the organisation that provided you
with the data. You are not permitted to copy, sub-licence,
distribute or sell any of this data to third parties in any form.