

SPECIFICATION:

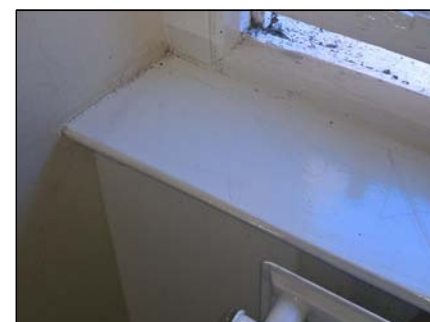
NEW SECONDARY GLAZING TO BE 'GRANADA' HERITAGE BALANCED VERTICAL SLIDER FACE FIX TILT IN UNITS FITTED INTO WINDOW REVEAL IN ACCORDANCE WITH MANUFACTURERS INSTRUCTIONS. UNITS TO BE FITTED WITH 4mm TOUGHENED GLASS.

DIMENSIONS OF UNIT TO BE DETERMINED ON SITE AND CONFIRMED TO DISTRICT ARCHITECT PRIOR TO MANUFACTURE. SCREW FIXINGS INTO EXISTING TIMBER TO BE KEPT TO A MINIMUM.

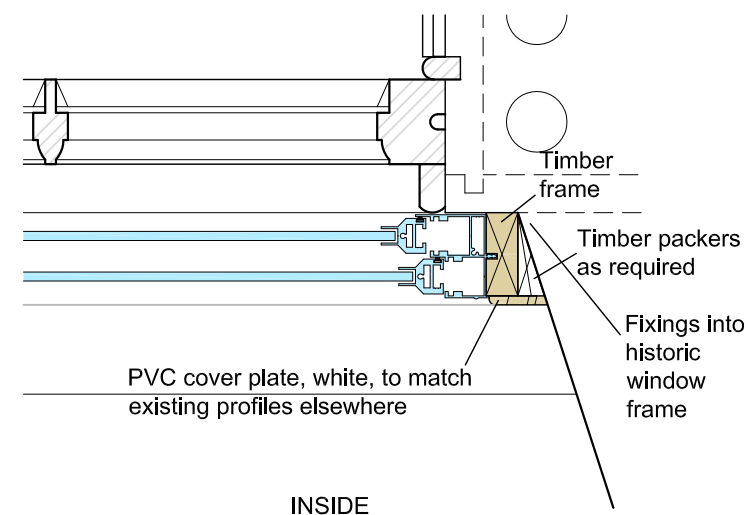
ALL WORKS TO BE CARRIED OUT IN ACCORDANCE WITH THE GUIDANCE GIVEN IN THE HISTORIC SCOTLAND PUBLICATIONS 'GUIDE FOR PRACTITIONERS 3 - CONSERVATION OF SASH & CASE WINDOWS' AND 'TECHNICAL ADVICE NOTE 3'.



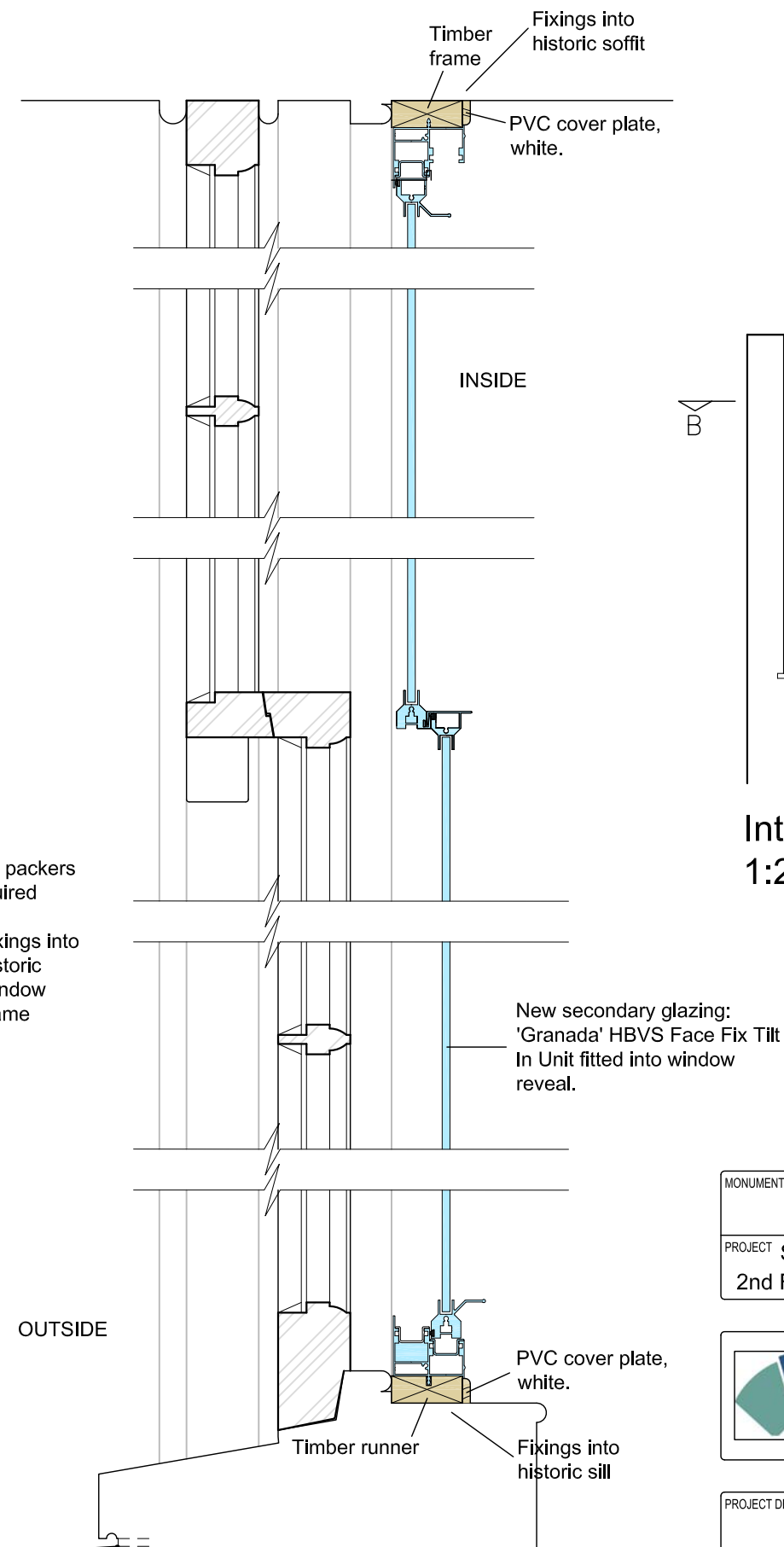
Existing view (Internal)



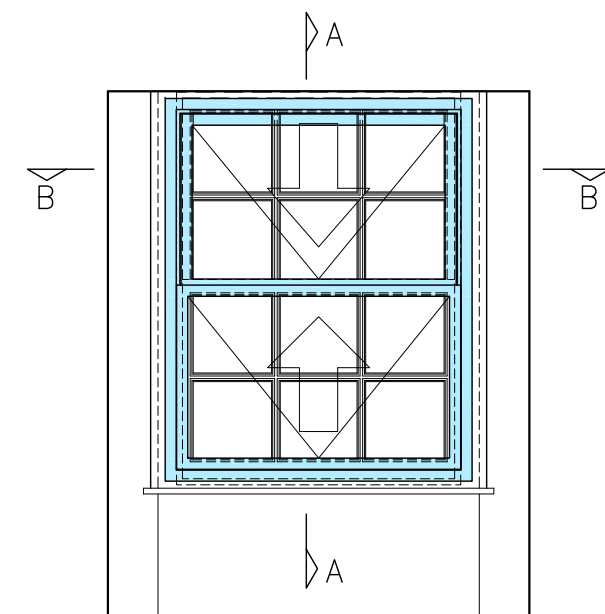
Existing view (Detail)



Section B-B 1:5



Section A-A 1:5



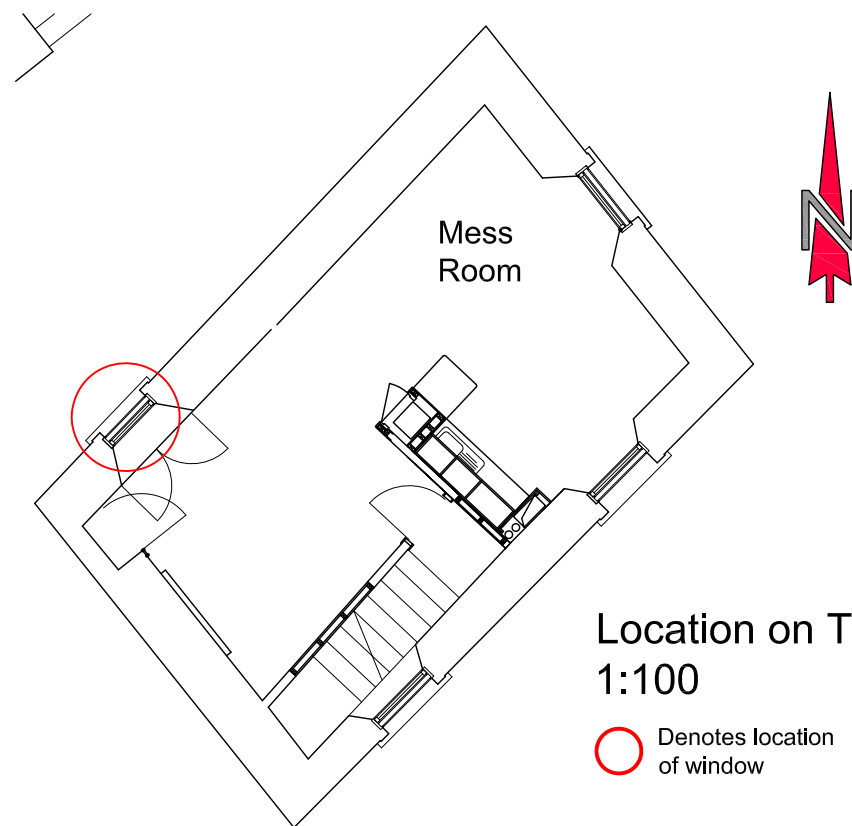
Internal Elevation
1:20

SMC

MONUMENT	STIRLING CASTLE
PROJECT	Secondary Glazing to Barrack Warden's House 2nd Floor - North East Window (Female Changing Area)

	HISTORIC ENVIRONMENT SCOTLAND	ÀRAINNEACHD EACHDRAIDHEIL ALBA
---------------------------------------------------------------------------------------	-------------------------------------	--------------------------------------

PROJECT DRAWING NUMBER	337/291/H/75		
SCALE	1:5, 1:20 @ A3	ARCHITECT	T Gaze
DATE	September 2016	DRAWN BY	IDC
ARCHIVE NUMBER			



Location on Third Floor
1:100

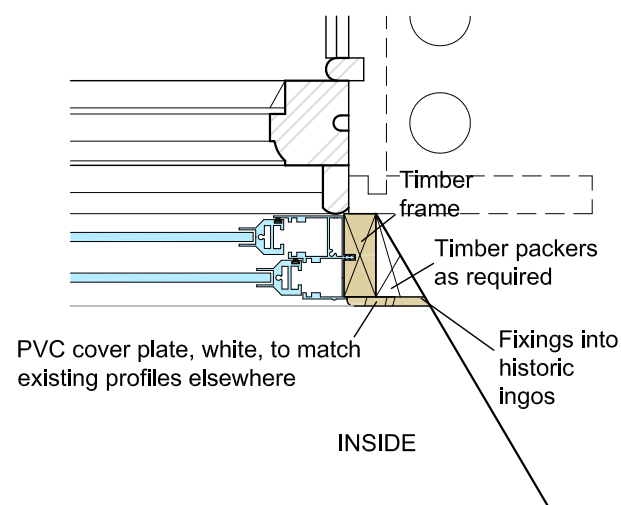
○ Denotes location of window

SPECIFICATION:

NEW SECONDARY GLAZING TO BE 'GRANADA' HERITAGE BALANCED VERTICAL SLIDER FACE FIX TILT IN UNITS FITTED INTO WINDOW REVEAL IN ACCORDANCE WITH MANUFACTURERS INSTRUCTIONS. UNITS TO BE FITTED WITH 4mm TOUGHENED GLASS.

DIMENSIONS OF UNIT TO BE DETERMINED ON SITE AND CONFIRMED TO DISTRICT ARCHITECT PRIOR TO MANUFACTURE. SCREW FIXINGS INTO EXISTING TIMBER TO BE KEPT TO A MINIMUM.

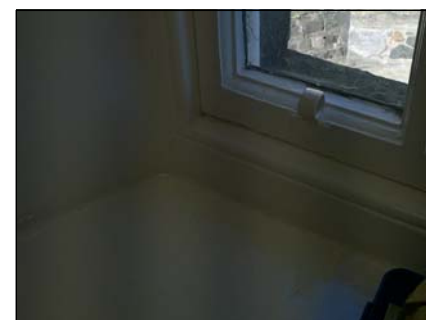
ALL WORKS TO BE CARRIED OUT IN ACCORDANCE WITH THE GUIDANCE GIVEN IN THE HISTORIC SCOTLAND PUBLICATIONS 'GUIDE FOR PRACTITIONERS 3 - CONSERVATION OF SASH & CASE WINDOWS' AND 'TECHNICAL ADVICE NOTE 3'.



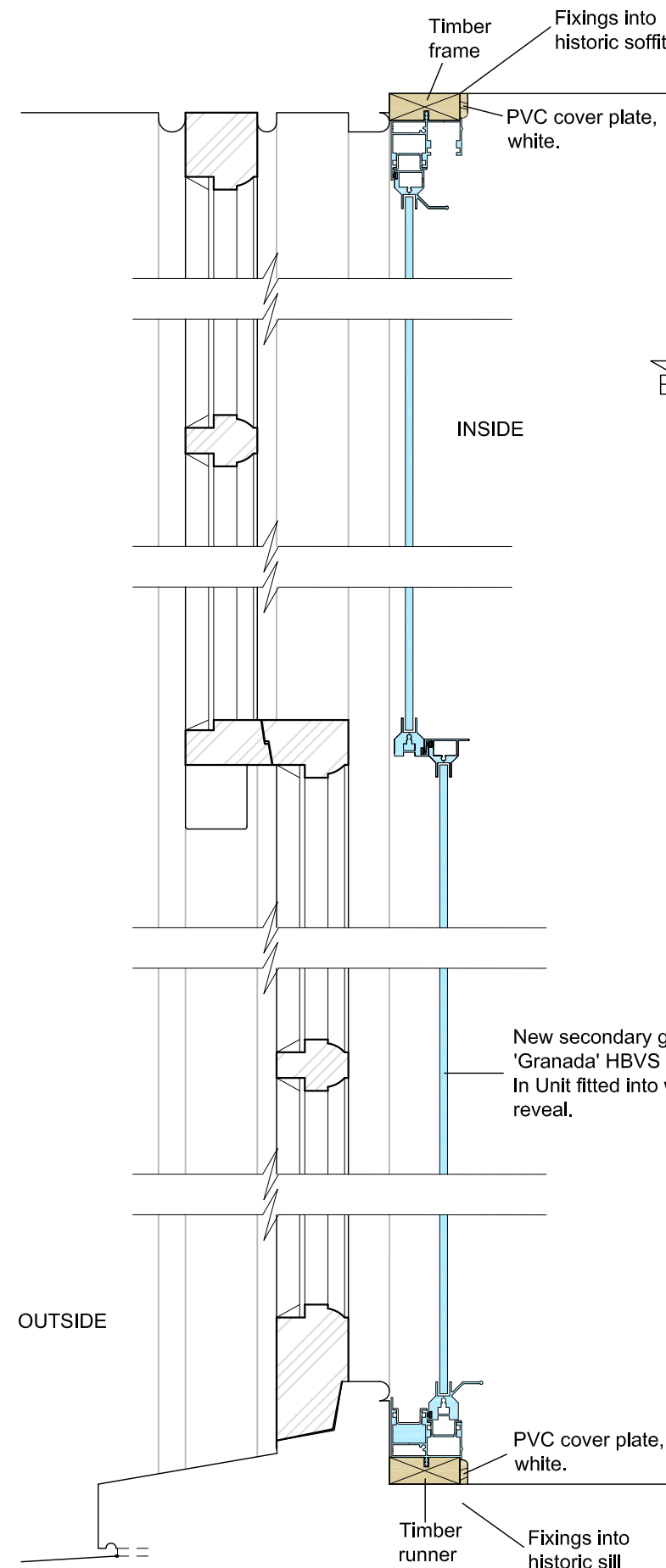
Section B-B 1:5



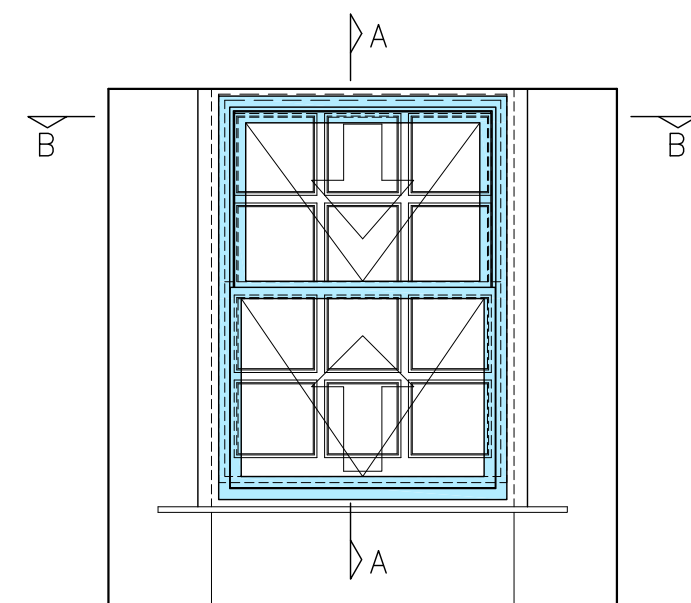
Existing view (Internal)



Existing view (Detail)



Section A-A 1:5



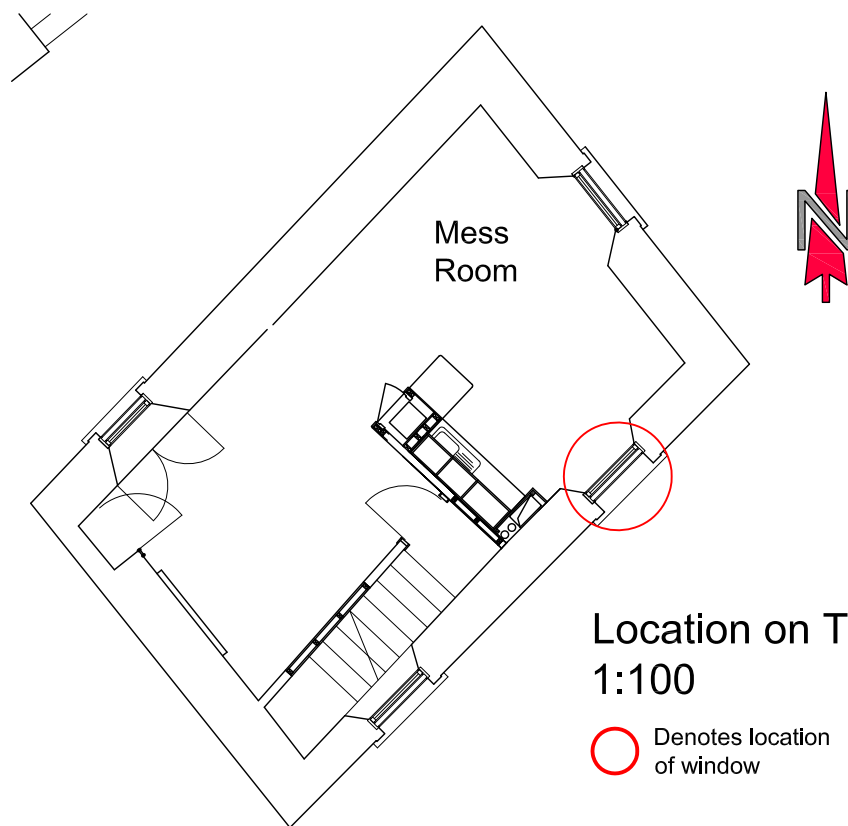
Internal Elevation
1:20

SMC

MONUMENT	STIRLING CASTLE
PROJECT	Secondary Glazing to Barrack Warden's House 3rd Floor - North West Window (Messing Area)

	HISTORIC ENVIRONMENT SCOTLAND	ÀRAINNEACHD EACHDRAIDHEIL ALBA
---------------------------------------------------------------------------------------	-------------------------------------	--------------------------------------

PROJECT DRAWING NUMBER		337/291/H/82	
SCALE	1:5, 1:20 @ A3	ARCHITECT	T Gaze
DATE	September 2016	DRAWN BY	IDC
ARCHIVE NUMBER			



Location on Third Floor
1:100

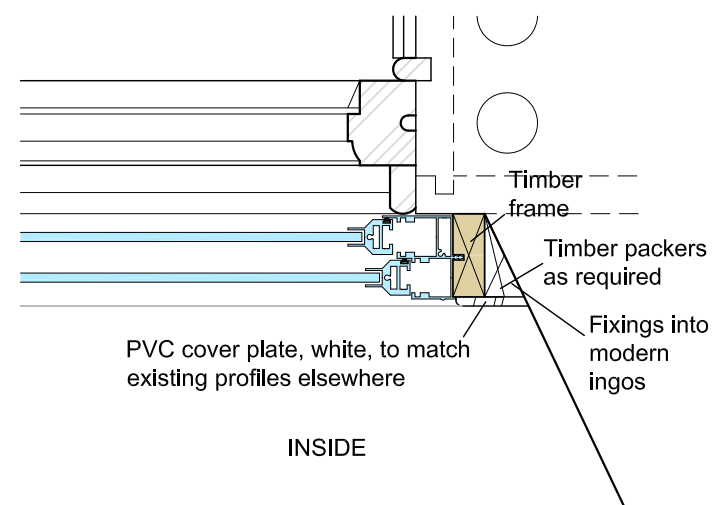
○ Denotes location of window

SPECIFICATION:

NEW SECONDARY GLAZING TO BE 'GRANADA' HERITAGE BALANCED VERTICAL SLIDER FACE FIX TILT IN UNITS FITTED INTO WINDOW REVEAL IN ACCORDANCE WITH MANUFACTURERS INSTRUCTIONS. UNITS TO BE FITTED WITH 4mm TOUGHENED GLASS.

DIMENSIONS OF UNIT TO BE DETERMINED ON SITE AND CONFIRMED TO DISTRICT ARCHITECT PRIOR TO MANUFACTURE. SCREW FIXINGS INTO EXISTING TIMBER TO BE KEPT TO A MINIMUM.

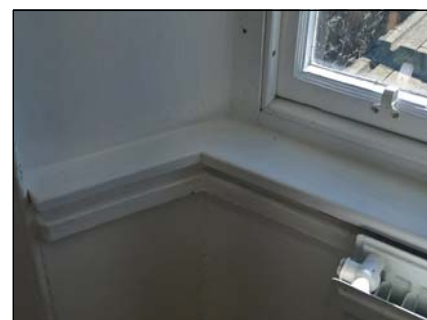
ALL WORKS TO BE CARRIED OUT IN ACCORDANCE WITH THE GUIDANCE GIVEN IN THE HISTORIC SCOTLAND PUBLICATIONS 'GUIDE FOR PRACTITIONERS 3 - CONSERVATION OF SASH & CASE WINDOWS' AND 'TECHNICAL ADVICE NOTE 3'.



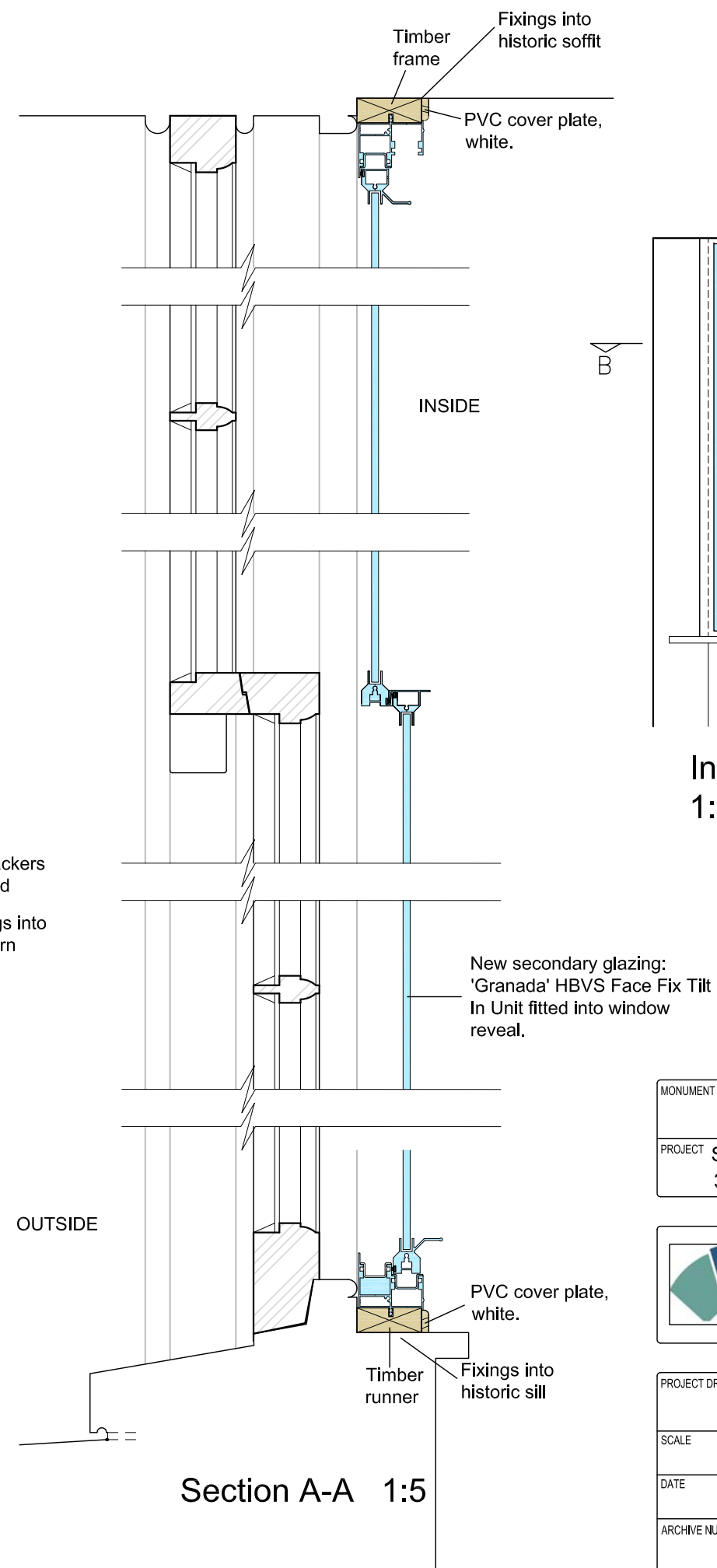
Section B-B 1:5



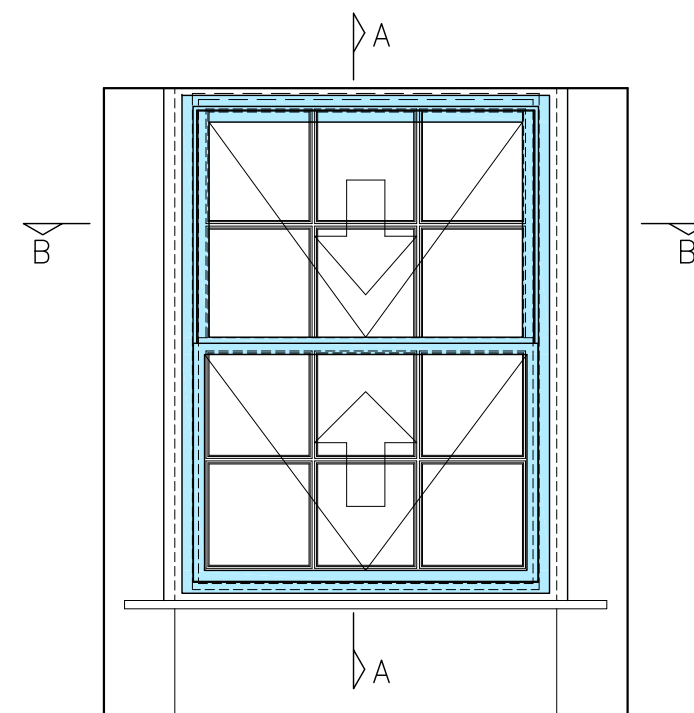
Existing view (Internal)



Existing view (Detail)



Section A-A 1:5



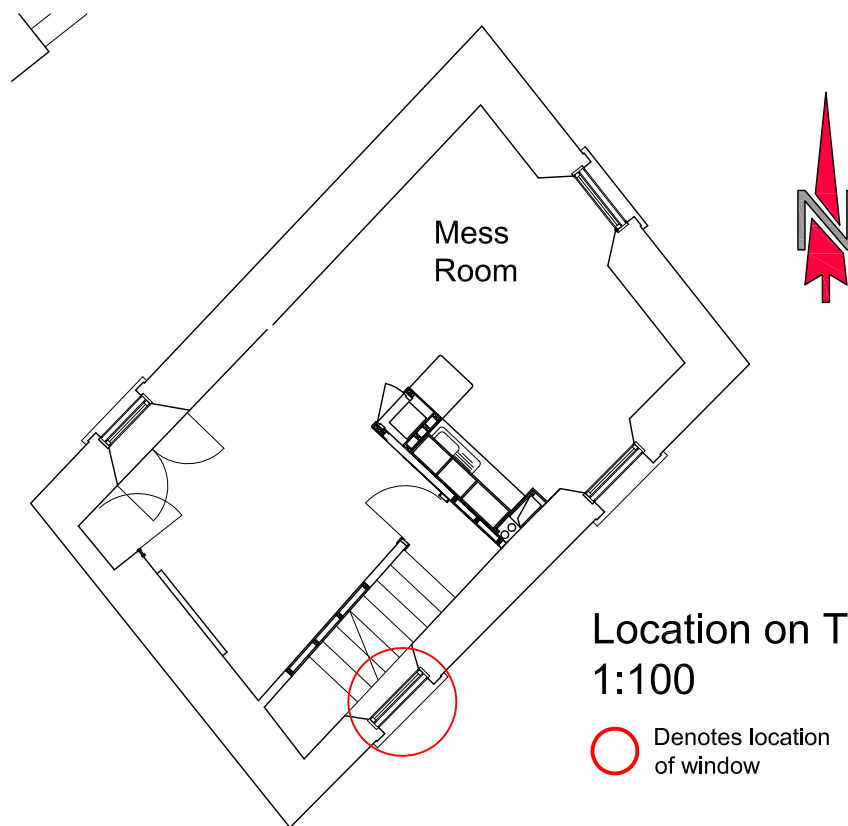
Internal Elevation
1:20

SMC

MONUMENT	STIRLING CASTLE
PROJECT	Secondary Glazing to Barrack Warden's House 3rd Floor - South East Window (Messing Area)

	HISTORIC ENVIRONMENT SCOTLAND	ÀRAINNEACHD EACHDRAIDHEIL ALBA
---------------------------------------------------------------------------------------	-------------------------------------	--------------------------------------

PROJECT DRAWING NUMBER	337/291/H/81		
SCALE	1:5, 1:20 @ A3	ARCHITECT	T Gaze
DATE	September 2016	DRAWN BY	IDC
ARCHIVE NUMBER			



Location on Third Floor
1:100

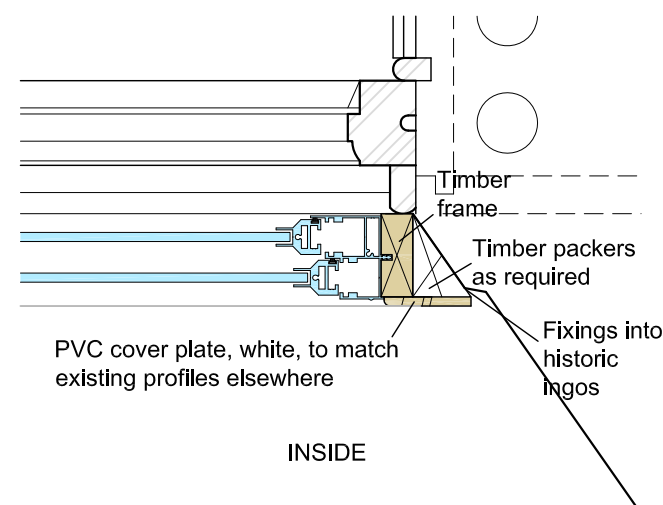
○ Denotes location of window

SPECIFICATION:

NEW SECONDARY GLAZING TO BE 'GRANADA' HERITAGE BALANCED VERTICAL SLIDER FACE FIX TILT IN UNITS FITTED INTO WINDOW REVEAL IN ACCORDANCE WITH MANUFACTURERS INSTRUCTIONS. UNITS TO BE FITTED WITH 4mm TOUGHENED GLASS.

DIMENSIONS OF UNIT TO BE DETERMINED ON SITE AND CONFIRMED TO DISTRICT ARCHITECT PRIOR TO MANUFACTURE. SCREW FIXINGS INTO EXISTING TIMBER TO BE KEPT TO A MINIMUM.

ALL WORKS TO BE CARRIED OUT IN ACCORDANCE WITH THE GUIDANCE GIVEN IN THE HISTORIC SCOTLAND PUBLICATIONS 'GUIDE FOR PRACTITIONERS 3 - CONSERVATION OF SASH & CASE WINDOWS' AND 'TECHNICAL ADVICE NOTE 3'.



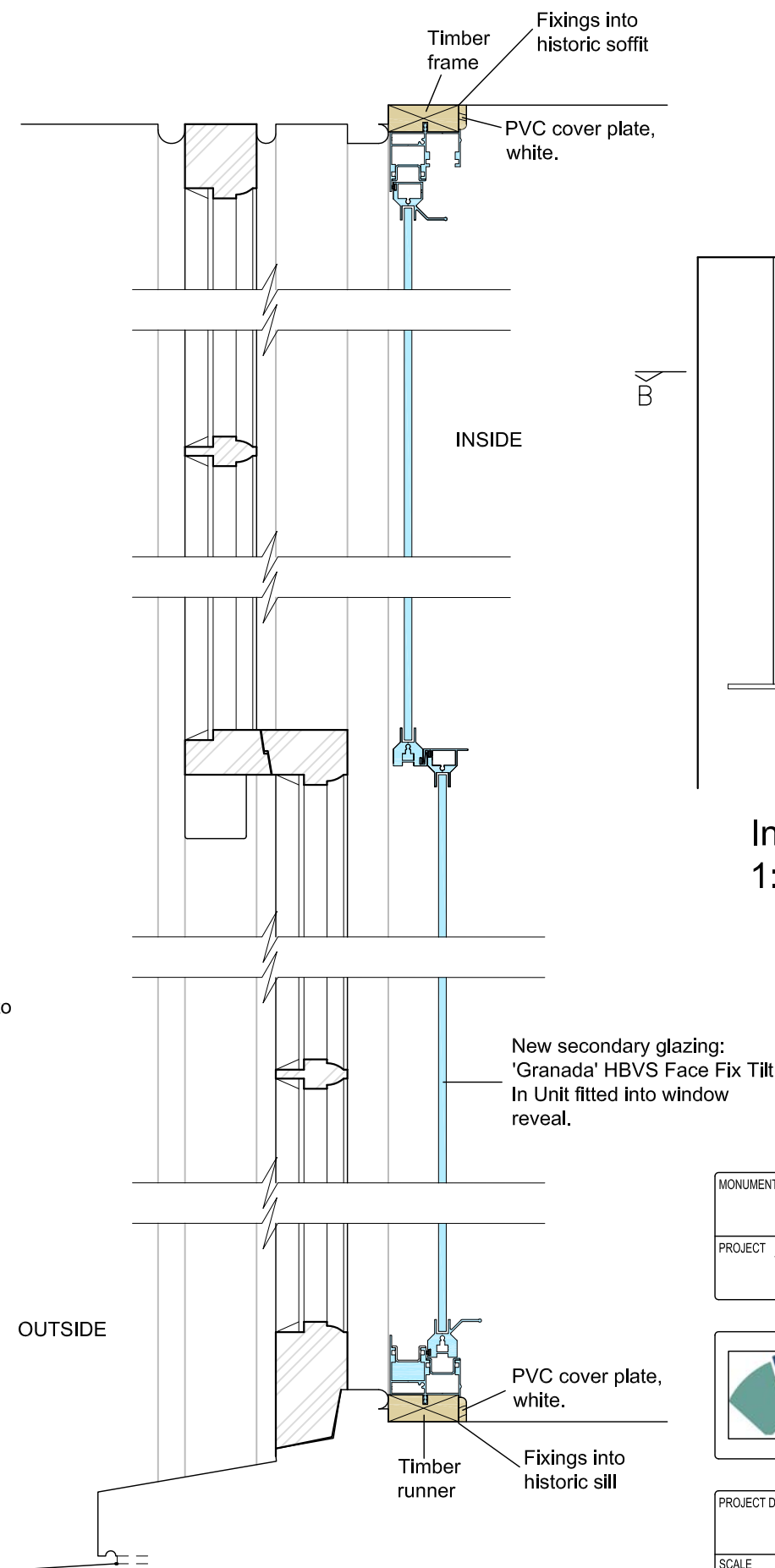
Section B-B 1:5



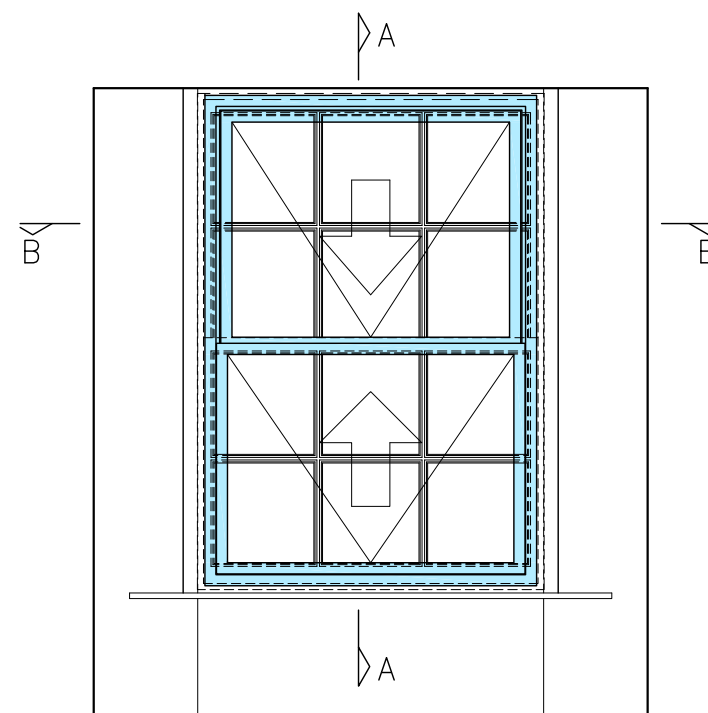
Existing view (Internal)



Existing view (Detail)



Section A-A 1:5



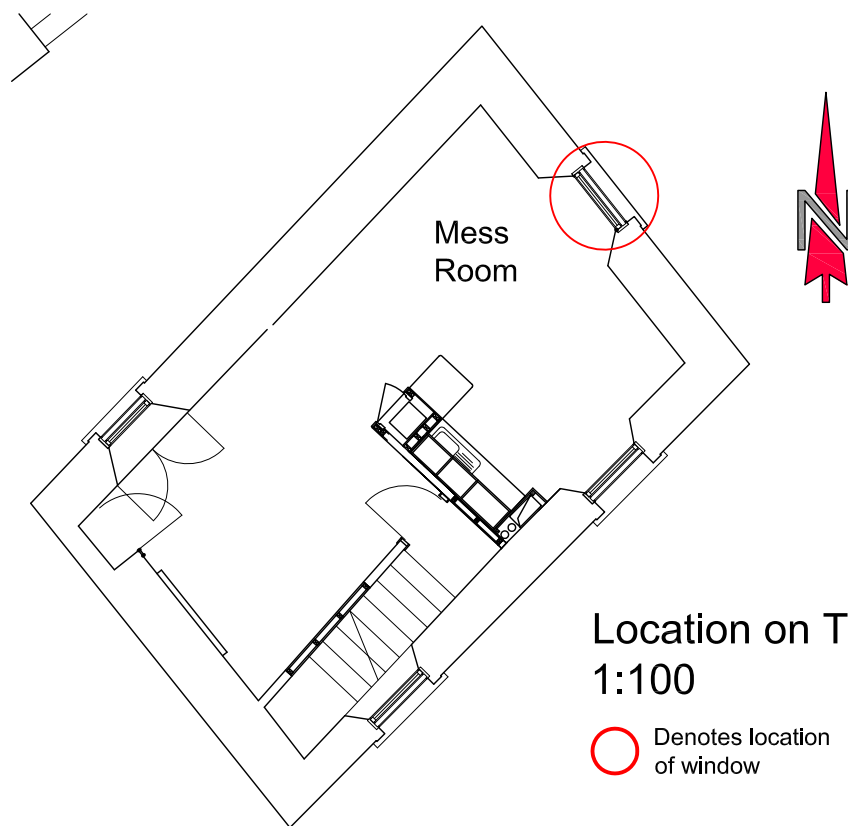
Internal Elevation
1:20

SMC

MONUMENT	STIRLING CASTLE
PROJECT	Secondary Glazing to Barrack Warden's House 3rd Floor - South West Window (Stairwell)

	HISTORIC ENVIRONMENT SCOTLAND	ÀRAINNEACHD EACHDRAIDHEIL ALBA
---------------------------------------------------------------------------------------	-------------------------------------	--------------------------------------

PROJECT DRAWING NUMBER		337/291/H/80	
SCALE	1:5, 1:20 @ A3	ARCHITECT	T Gaze
DATE	September 2016	DRAWN BY	IDC
ARCHIVE NUMBER			



Location on Third Floor
1:100

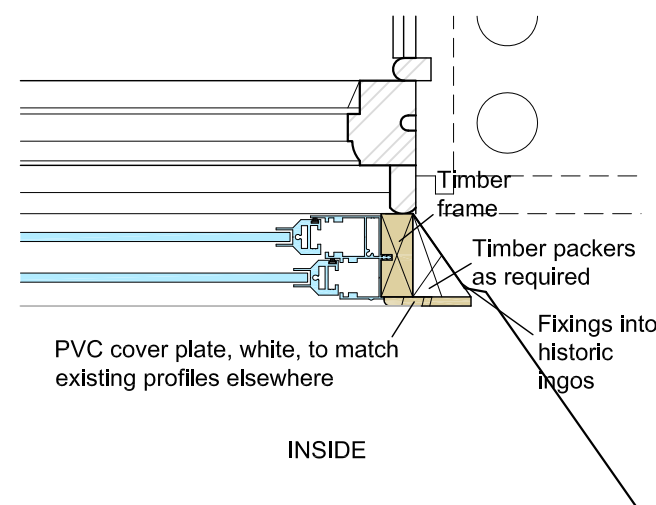
○ Denotes location
of window

SPECIFICATION:

NEW SECONDARY GLAZING TO BE 'GRANADA'
HERITAGE BALANCED VERTICAL SLIDER FACE FIX TILT
IN UNITS FITTED INTO WINDOW REVEAL IN
ACCORDANCE WITH MANUFACTURERS INSTRUCTIONS.
UNITS TO BE FITTED WITH 4mm TOUGHENED GLASS.

DIMENSIONS OF UNIT TO BE DETERMINED ON SITE AND
CONFIRMED TO DISTRICT ARCHITECT PRIOR TO
MANUFACTURE.
SCREW FIXINGS INTO EXISTING TIMBER TO BE KEPT TO
A MINIMUM.

ALL WORKS TO BE CARRIED OUT IN ACCORDANCE
WITH THE GUIDANCE GIVEN IN THE HISTORIC
SCOTLAND PUBLICATIONS 'GUIDE FOR PRACTITIONERS
3 - CONSERVATION OF SASH & CASE WINDOWS' AND
'TECHNICAL ADVICE NOTE 3'.



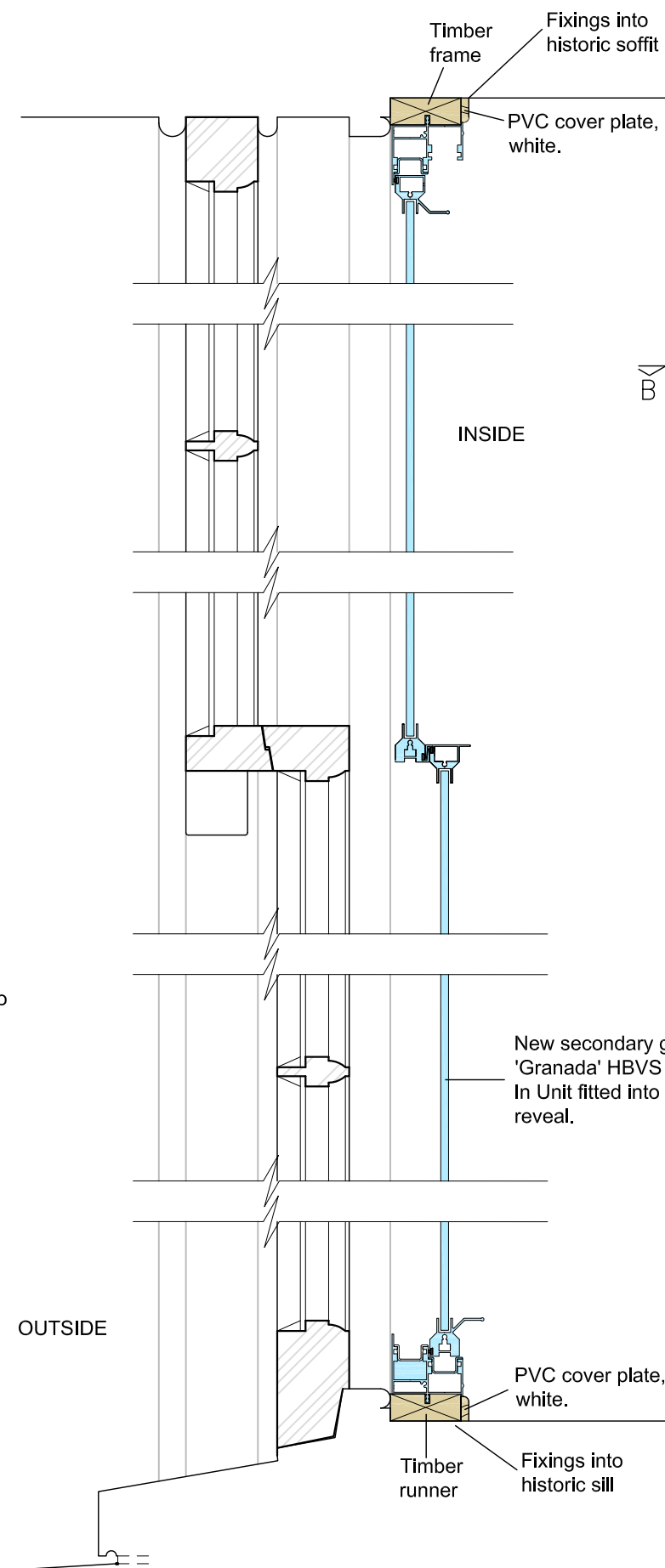
Section B-B 1:5



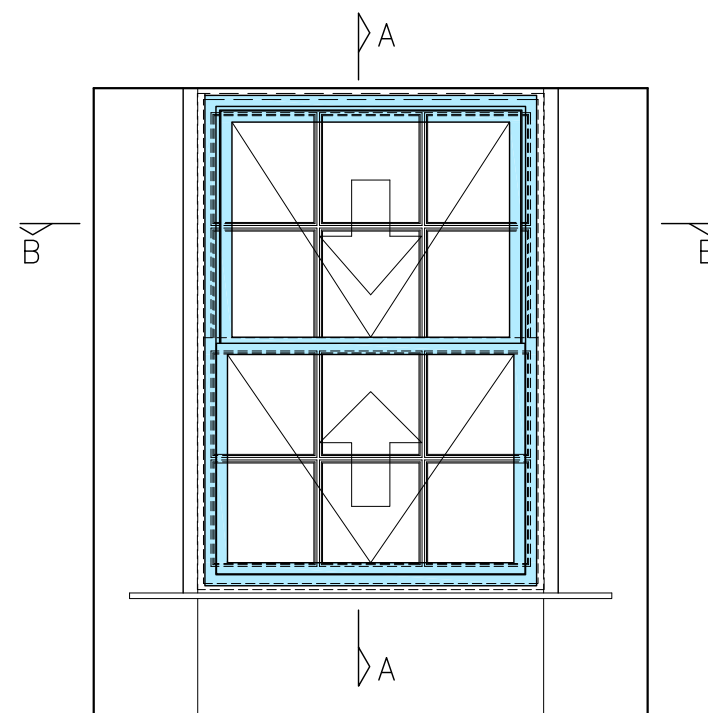
Existing view (Internal)



Existing view (Detail)



Section A-A 1:5



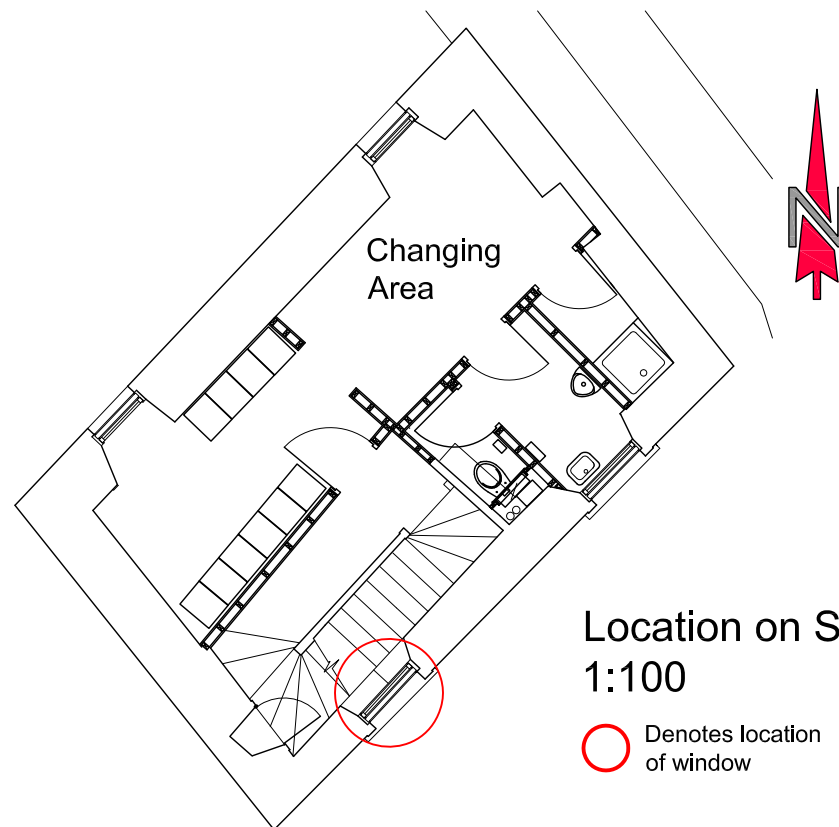
Internal Elevation
1:20

SMC

MONUMENT	STIRLING CASTLE
PROJECT	Secondary Glazing to Barrack Warden's House 3rd Floor - East Window (Messing Area)

	HISTORIC ENVIRONMENT SCOTLAND	ÀRAINNEACHD EACHDRAIDHEIL ALBA
---------------------------------------------------------------------------------------	-------------------------------------	--------------------------------------

PROJECT DRAWING NUMBER	337/291/H/79		
SCALE	1:5, 1:20 @ A3	ARCHITECT	T Gaze
DATE	September 2016	DRAWN BY	IDC
ARCHIVE NUMBER			



Location on Second Floor
1:100

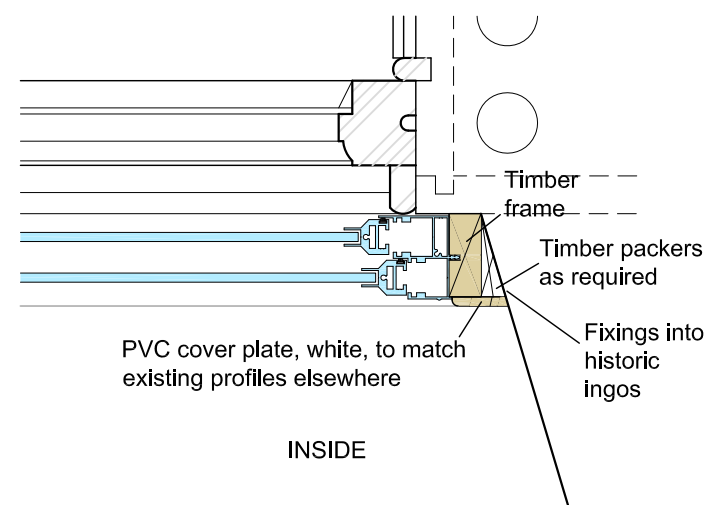
○ Denotes location of window

SPECIFICATION:

NEW SECONDARY GLAZING TO BE 'GRANADA' HERITAGE BALANCED VERTICAL SLIDER FACE FIX TILT IN UNITS FITTED INTO WINDOW REVEAL IN ACCORDANCE WITH MANUFACTURERS INSTRUCTIONS. UNITS TO BE FITTED WITH 4mm TOUGHENED GLASS.

DIMENSIONS OF UNIT TO BE DETERMINED ON SITE AND CONFIRMED TO DISTRICT ARCHITECT PRIOR TO MANUFACTURE. SCREW FIXINGS INTO EXISTING TIMBER TO BE KEPT TO A MINIMUM.

ALL WORKS TO BE CARRIED OUT IN ACCORDANCE WITH THE GUIDANCE GIVEN IN THE HISTORIC SCOTLAND PUBLICATIONS 'GUIDE FOR PRACTITIONERS 3 - CONSERVATION OF SASH & CASE WINDOWS' AND 'TECHNICAL ADVICE NOTE 3'.



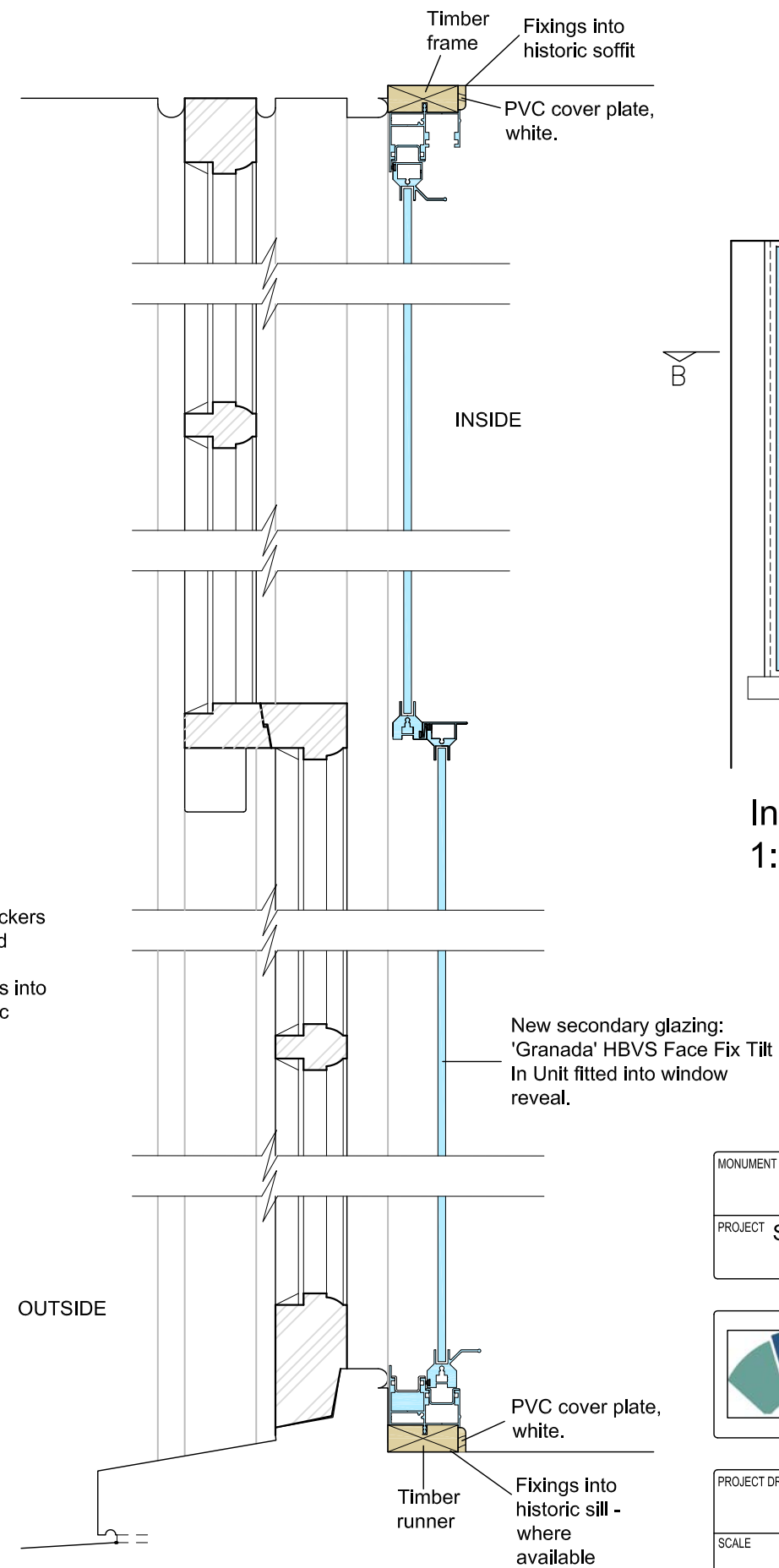
Section B-B 1:5



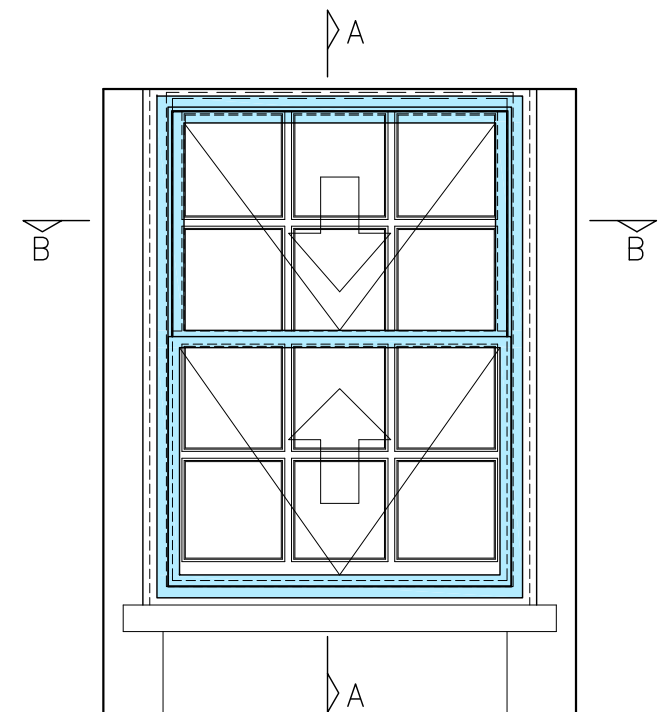
Existing view (Internal)



Existing view (Detail)



Section A-A 1:5



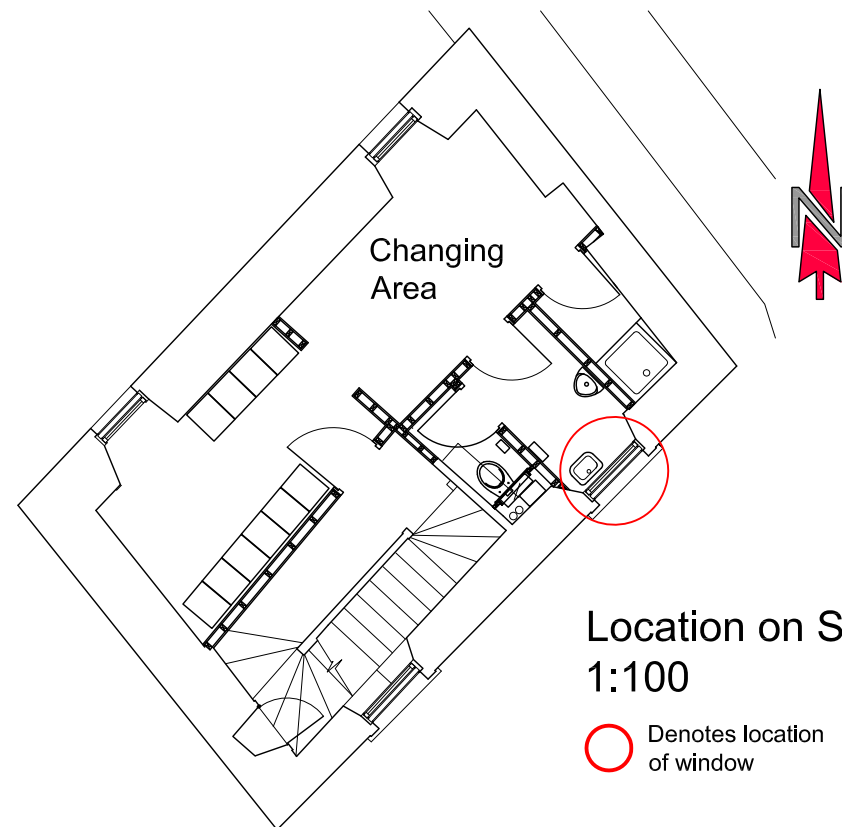
Internal Elevation
1:20

SMC

MONUMENT	STIRLING CASTLE
PROJECT	Secondary Glazing to Barrack Warden's House 2nd Floor - South West Window (Stairwell)

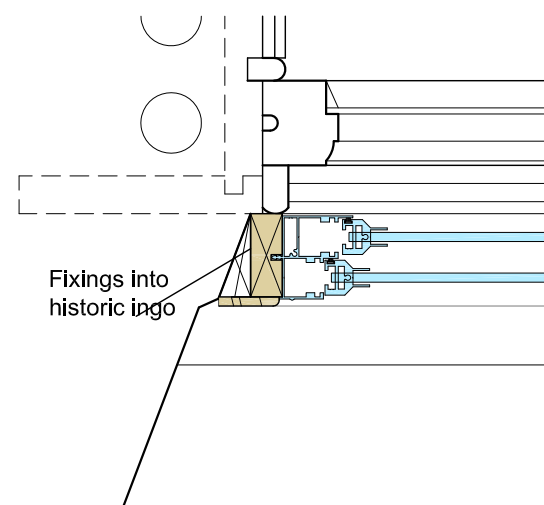
	HISTORIC ENVIRONMENT SCOTLAND	ÀRAINNEACHD EACHDRAIDHEIL ALBA
---------------------------------------------------------------------------------------	-------------------------------------	--------------------------------------

PROJECT DRAWING NUMBER	337/291/H/78		
SCALE	1:5, 1:20 @ A3	ARCHITECT	T Gaze
DATE	September 2016	DRAWN BY	IDC
ARCHIVE NUMBER			

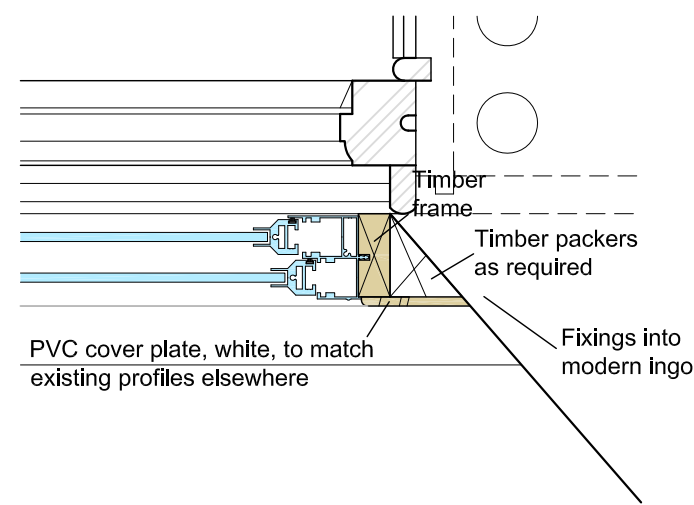


Location on Second Floor
1:100

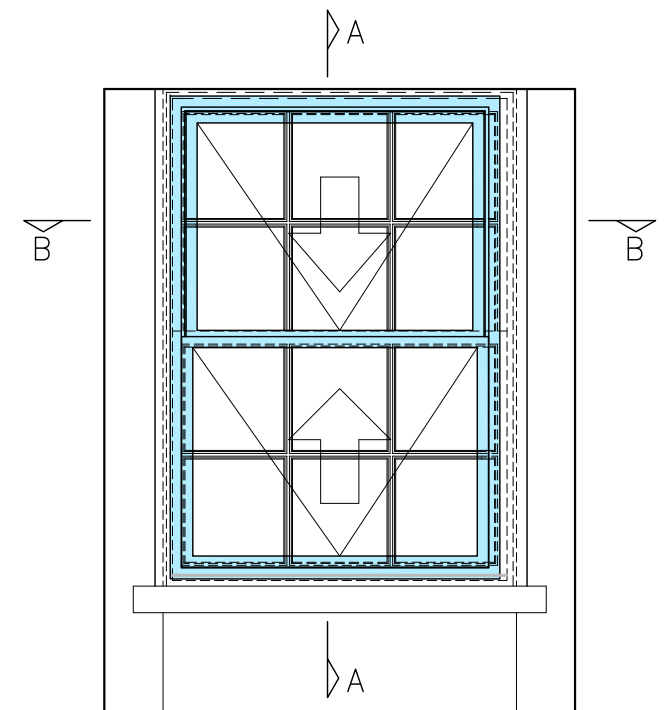
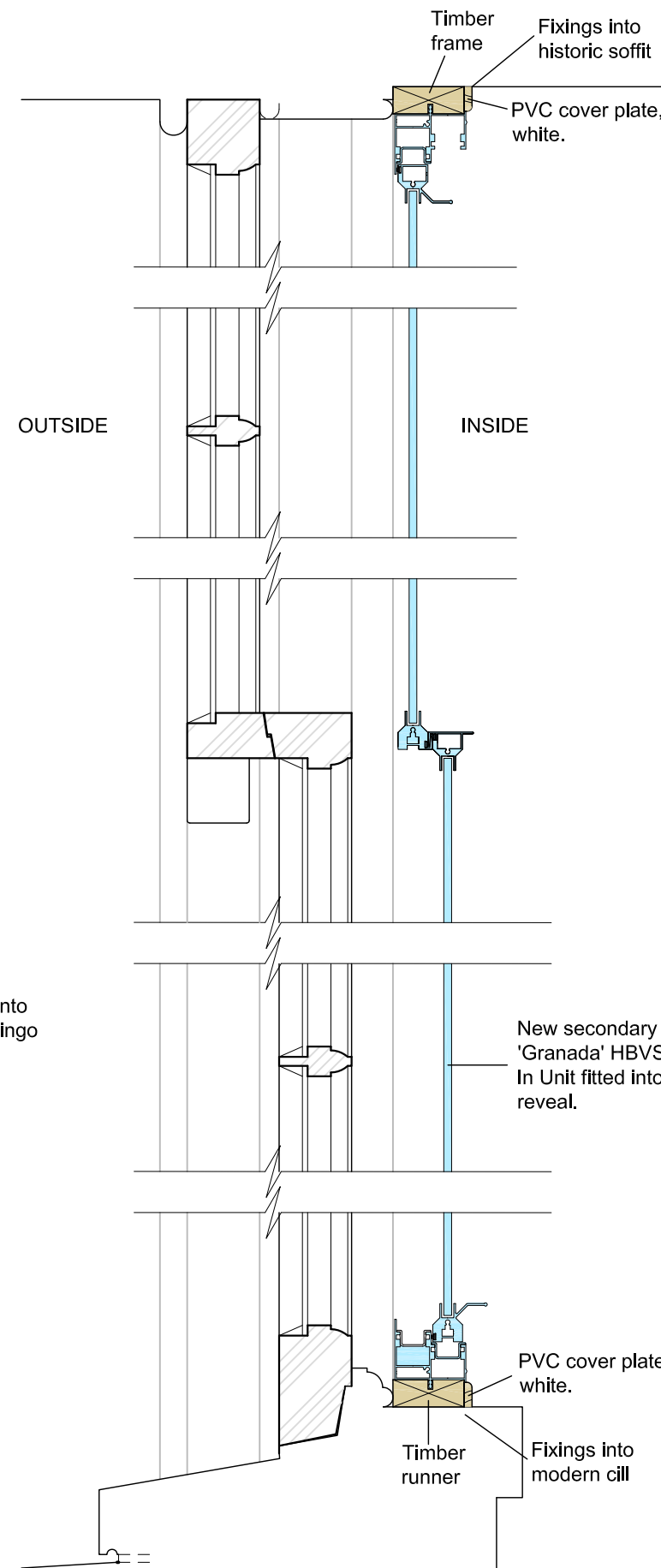
○ Denotes location
of window



Section B-B 1:5



Section A-A 1:5



Internal Elevation
1:20

SPECIFICATION:

NEW SECONDARY GLAZING TO BE 'GRANADA' HERITAGE BALANCED VERTICAL SLIDER FACE FIX TILT IN UNITS FITTED INTO WINDOW REVEAL IN ACCORDANCE WITH MANUFACTURERS INSTRUCTIONS. UNITS TO BE FITTED WITH 4mm TOUGHENED GLASS.

DIMENSIONS OF UNIT TO BE DETERMINED ON SITE AND CONFIRMED TO DISTRICT ARCHITECT PRIOR TO MANUFACTURE. SCREW FIXINGS INTO EXISTING TIMBER TO BE KEPT TO A MINIMUM.

ALL WORKS TO BE CARRIED OUT IN ACCORDANCE WITH THE GUIDANCE GIVEN IN THE HISTORIC SCOTLAND PUBLICATIONS 'GUIDE FOR PRACTITIONERS 3 - CONSERVATION OF SASH & CASE WINDOWS' AND 'TECHNICAL ADVICE NOTE 3'.



Existing view (Internal)



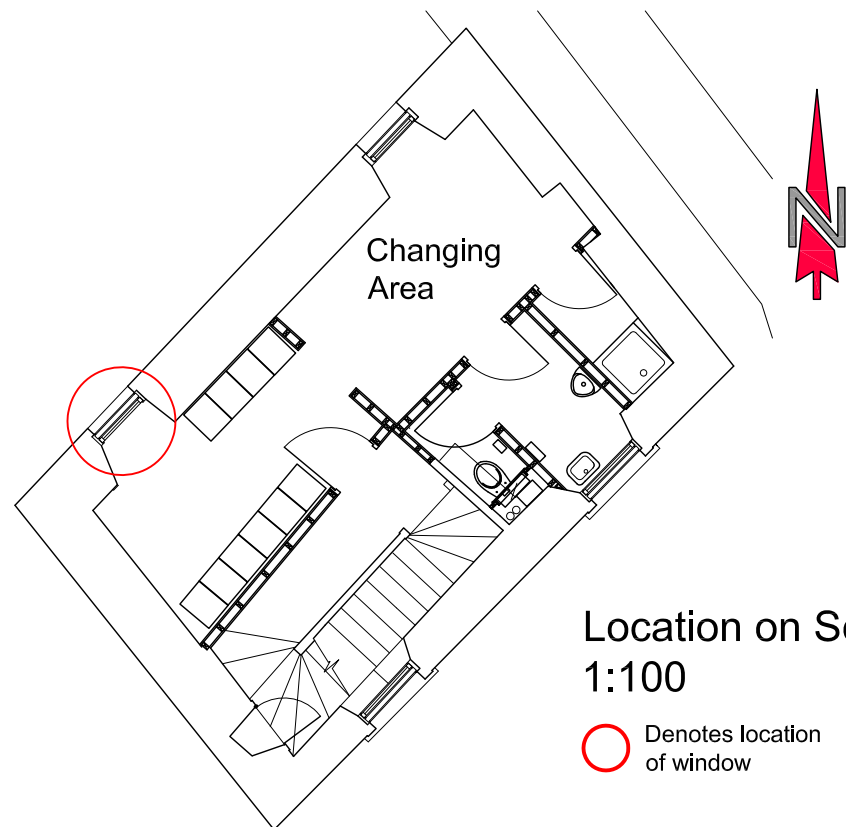
Existing view (Detail)

SMC

MONUMENT	STIRLING CASTLE
PROJECT	Secondary Glazing to Barrack Warden's House 2nd Floor - South East Window (Male WC)

	HISTORIC ENVIRONMENT SCOTLAND	ÀRAINNEACHD EACHDRAIDHEIL ALBA
---------------------------------------------------------------------------------------	-------------------------------------	--------------------------------------

PROJECT DRAWING NUMBER		337/291/H/77	
SCALE	1:5, 1:20 @ A3	ARCHITECT	T Gaze
DATE	September 2016	DRAWN BY	IDC
ARCHIVE NUMBER			



Location on Second Floor
1:100

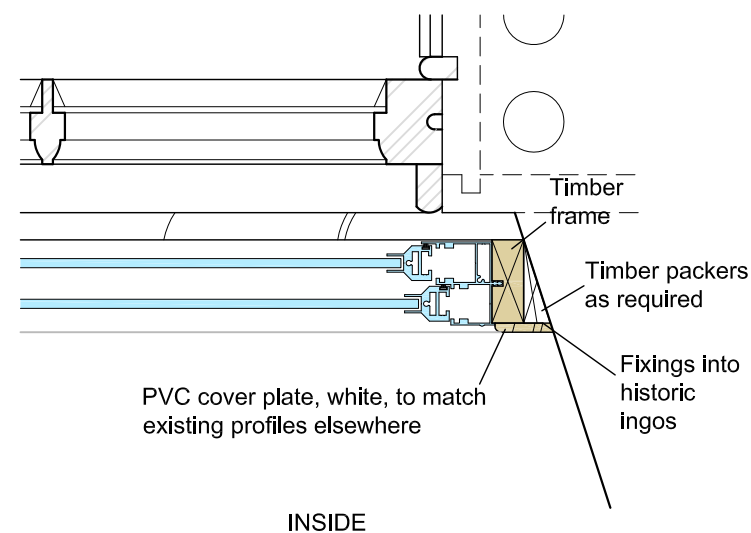
○ Denotes location
of window

SPECIFICATION:

NEW SECONDARY GLAZING TO BE 'GRANADA' HERITAGE BALANCED VERTICAL SLIDER FACE FIX TILT IN UNITS FITTED INTO WINDOW REVEAL IN ACCORDANCE WITH MANUFACTURERS INSTRUCTIONS. UNITS TO BE FITTED WITH 4mm TOUGHENED GLASS.

DIMENSIONS OF UNIT TO BE DETERMINED ON SITE AND CONFIRMED TO DISTRICT ARCHITECT PRIOR TO MANUFACTURE. SCREW FIXINGS INTO EXISTING TIMBER TO BE KEPT TO A MINIMUM.

ALL WORKS TO BE CARRIED OUT IN ACCORDANCE WITH THE GUIDANCE GIVEN IN THE HISTORIC SCOTLAND PUBLICATIONS 'GUIDE FOR PRACTITIONERS 3 - CONSERVATION OF SASH & CASE WINDOWS' AND 'TECHNICAL ADVICE NOTE 3'.



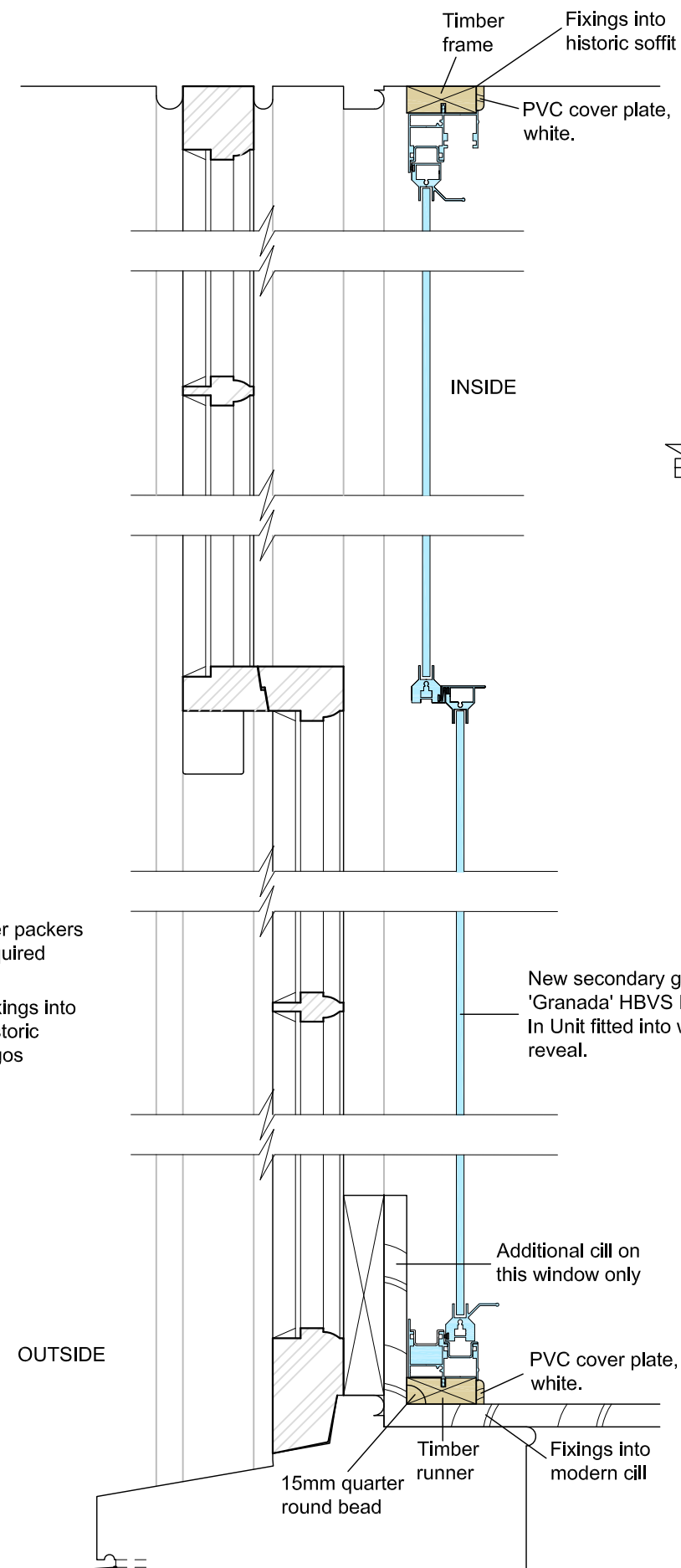
Section B-B 1:5



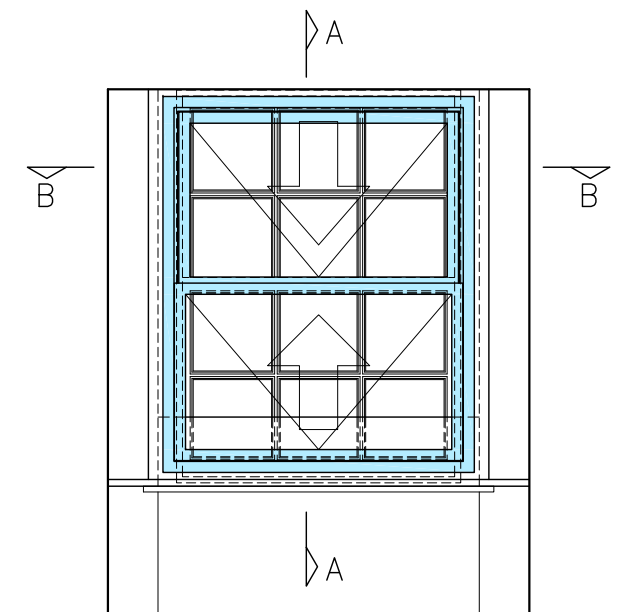
Existing view (Internal)



Existing view (Detail)



Section A-A 1:5



Internal Elevation
1:20

SMC

MONUMENT	STIRLING CASTLE
PROJECT	Secondary Glazing to Barrack Warden's House 2nd Floor - North West Window (Female Lockers Area)

	HISTORIC ENVIRONMENT SCOTLAND	ÀRAINNEACHD EACHDRAIDHEIL ALBA
---------------------------------------------------------------------------------------	-------------------------------------	--------------------------------------

PROJECT DRAWING NUMBER		337/291/H/76	
SCALE	1:5, 1:20 @ A3	ARCHITECT	T Gaze
DATE	September 2016	DRAWN BY	IDC
ARCHIVE NUMBER			