

## Burghead well – fit additional rope handrail

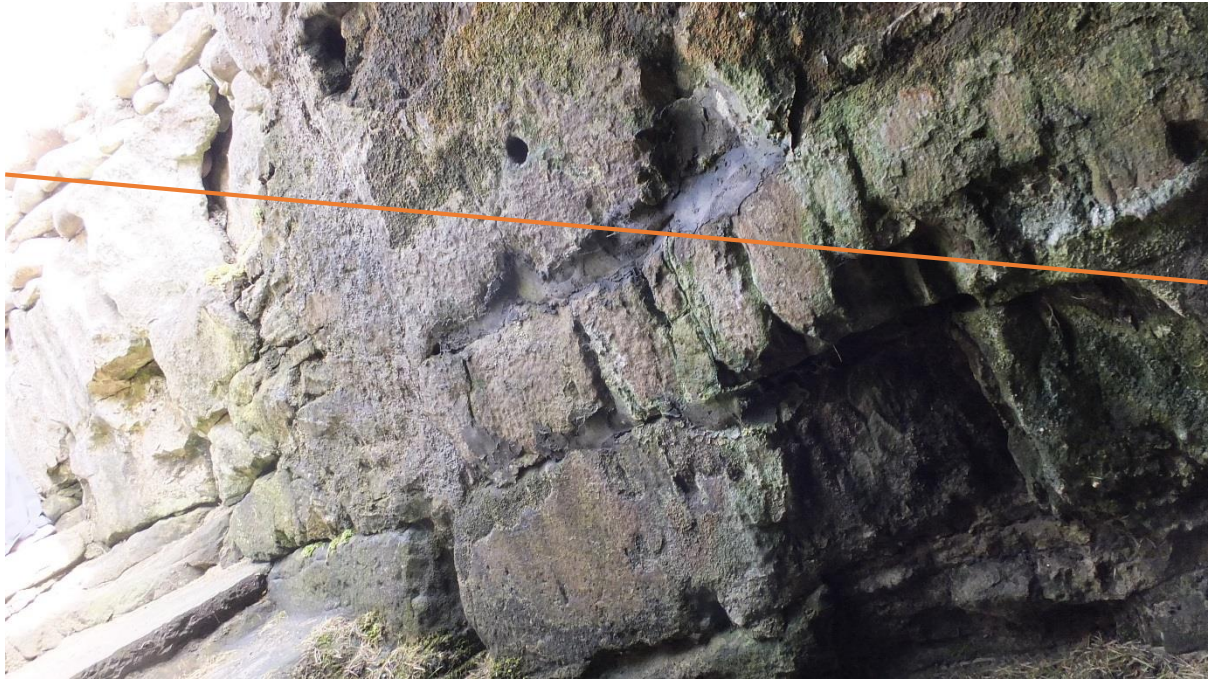


Existing handrail has 6no. anchors into masonry or concrete in joints.



Proposed base fixing for rail in concrete adjacent to grill





Fixings along handrail line to be selected to avoid early lime mortar



Modern rubble build to be locally rebuilt with cement mortar core where fixing required. Rope handrail.