

AM
THE ANCIENT MONUMENTS AND
ARCHAEOLOGICAL AREAS ACT 1979

24 JAN 2001 130
Entry in the Schedule of Monuments

2000

Re: The Monument known as
Caisteal Breac, dun, Glenborrodale

in the Parish of Ardnamurchan and
County of Argyll

10

Search Sheet No: 14456

Historic Scotland
Longmore House
Salisbury Place
Edinburgh

28 FEB 2001

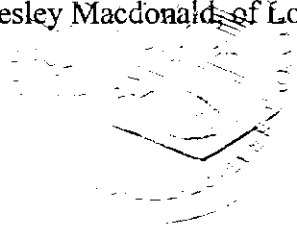
THE ANCIENT MONUMENTS AND ARCHAEOLOGICAL AREAS ACT 1979
ENTRY IN THE SCHEDULE OF MONUMENTS

The monument known as Caisteal Breac, dun, Glenborrodale comprises a dun, a fortified settlement of Iron Age date. The area to be scheduled comprises the remains described and an area around them within which related material may be expected to be found. It is circular with a diameter of 40m. The monument, which lies in the Parish of Ardnamurchan and the County of Argyll as shown outlined in red on the Plan annexed and executed as relative hereto



included in the Schedule of Monuments appearing to the Scottish Ministers to be of national importance compiled and maintained by them under section 1(1) of the Ancient Monuments and Archaeological Areas Act 1979.

Subscribed by Frank James Lawrie, Director of Heritage Policy with Historic Scotland, being an officer of the Scottish Ministers at Edinburgh on the 30th day of November Two thousand, before this witness Lesley Macdonald, of Longmore House, Salisbury Place, Edinburgh.



Director of Heritage Policy

Register on behalf of the Scottish Ministers in the Register of the County of Argyll.



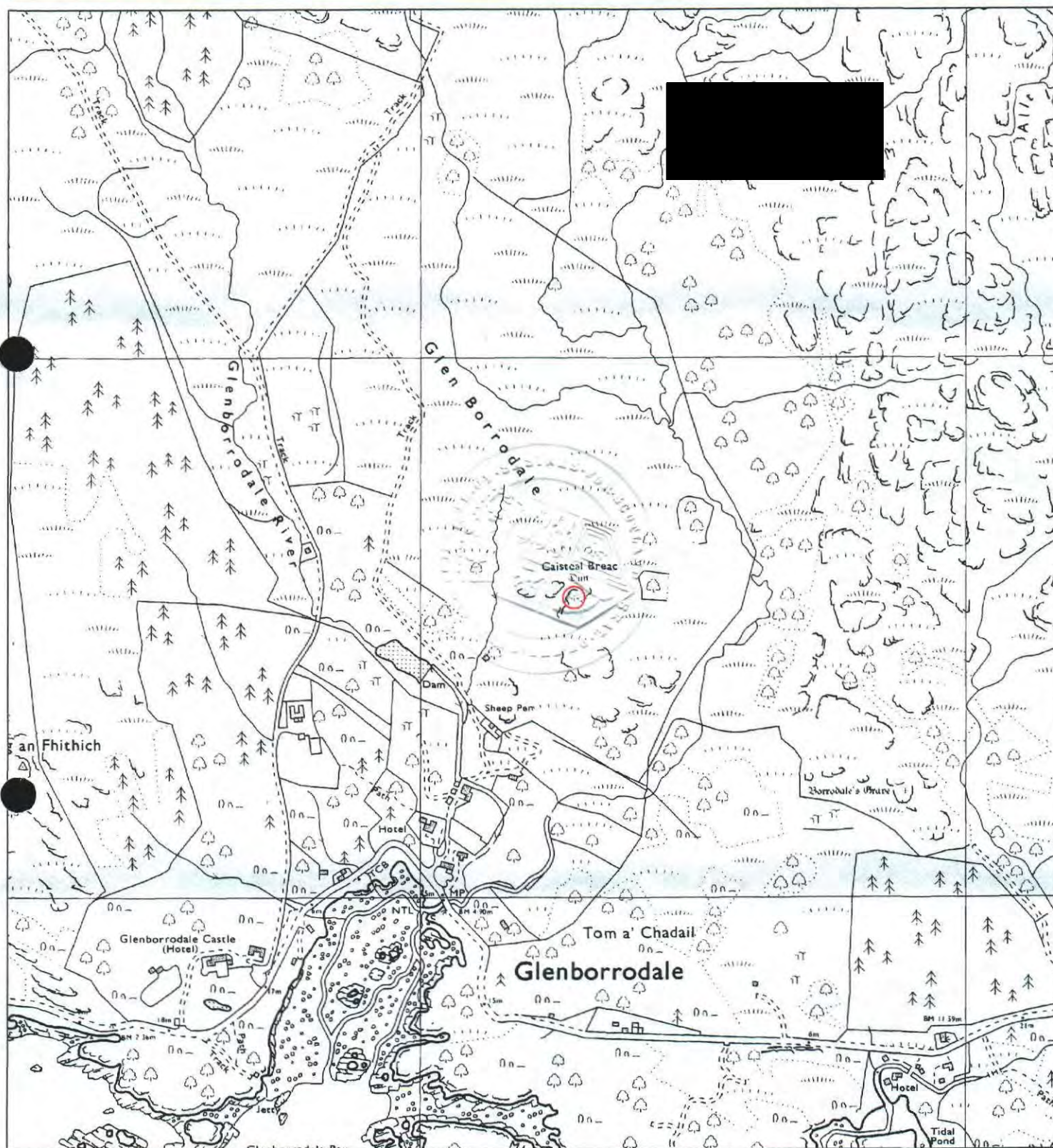
An Officer of the Scottish Ministers

MFA12585

REGISTERS OF SCOTLAND
GENERAL REGISTER OF SASINES
COUNTY OF ARGYLL
FICHE 8 FRAME 33
PRESENTED & RECORDED ON 24 JAN 2001

E

This is the plan referred to in the entry in the Schedule affecting: Caisteal Breac, dun, Glenborrodale
 dated: 30 November 2000
 and is signed as relative thereto.



Caisteal Breac, dun, Glenborrodale

Ardnamurchan Parish

Scheduled Area



Sheet: NM66SW

Scale 1:10000

100 0 100 200 300 400 Meters

This map is reproduced from the OS map by Historic Scotland with the permission of The Controller of Her Majesty's Stationery Office, © Crown copyright. Unauthorised reproduction infringes Crown Copyright and may lead to prosecution or civil proceedings. Licence No. GD 03135G0014.