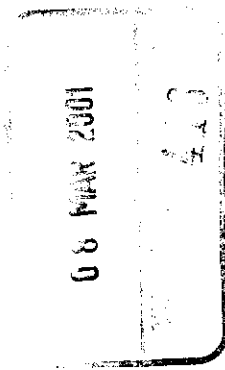


THE ANCIENT MONUMENTS AND
ARCHAEOLOGICAL AREAS ACT 1979

Entry in the Schedule of Monuments



ARG

14

2001

Re: The Monument known as
Beinn Bhan, standing stone 980m WNW of
summit

in the Parish of Morvern and

County of Argyll


Search Sheet No: 17875

Historic Scotland
Longmore House
Salisbury Place
Edinburgh

MFA07288

THE ANCIENT MONUMENTS AND ARCHAEOLOGICAL AREAS ACT 1979
ENTRY IN THE SCHEDULE OF MONUMENTS

The monument known as Beinn Bhan, standing stone 980m WNW of summit comprises a standing stone, probably of prehistoric date. The monument lies in a clearing in a conifer plantation at around 330m OD. It consists of a standing stone measuring about 1.8m in height, and some 0.5m by 0.6m at the base. The stone is approximately rectangular in cross-section, and has a pointed top. The monument may relate to ritual activity of Neolithic or Bronze Age date. The area to be scheduled comprises the standing stone and an area around it within which evidence relating to its erection and use is likely to survive. It is circular with a diameter of 20m. The monument, which lies in the Parish of Morvern and the County of Argyll as shown outlined in red on the Plan annexed and executed as relative hereto

 is hereby included in the Schedule of Monuments appearing to the Scottish Ministers to be of national importance compiled and maintained by them under section 1(1) of the Ancient Monuments and Archaeological Areas Act 1979.

Subscribed by Frank James Lawrie, Director of Heritage Policy with Historic Scotland, being an officer of the Scottish Ministers at Edinburgh on the 16th day of February Two thousand and one, before this witness Lesley Macdonald, of Longmore House, Salisbury Place, Edinburgh.

 Director of Heritage Policy

Register on behalf of the Scottish Ministers in the Register of the County of Argyll.

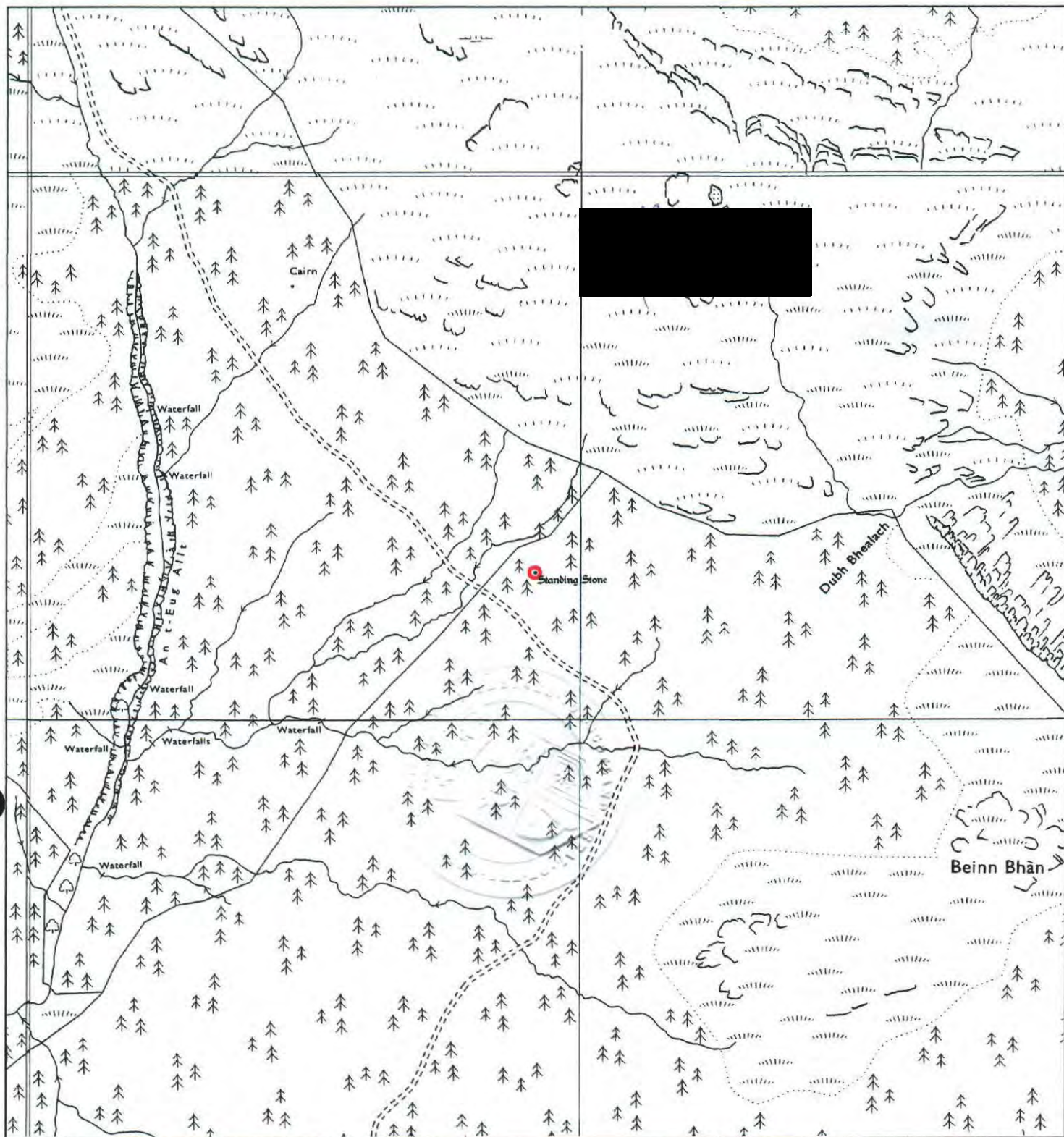

An Officer of the Scottish Ministers

MFA07488

ARG 01 2 8

REGISTERS OF SCOTLAND
GENERAL REGISTER OF SASINES
COUNTY OF ARGYLL
FICHE 96 FRAME 18
PRESENTED & RECORDED ON 08 MAR 2001

This is the plan referred to in the entry in the Schedule affecting
Beinn Bhan, standing stone 980m WNW of summit,
dated: 16 February 2001 and is signed as relative thereto.



Beinn Bhan, standing stone 980m
WNW of summit

Morvern Parish

Scheduled Area



MapSheet: NM64NE

Scale 1:10,000

100 0 100 200 300 400 500 Meters

This map is reproduced from the OS map by Historic Scotland
with the permission of The Controller of Her Majesty's Stationery
Office, © Crown copyright. Unauthorised reproduction infringes
Crown Copyright and may lead to prosecution or civil proceedings.
Licence No. GD 03135G0014.

ARG 01 2 6

19