

INV

THE ANCIENT MONUMENTS AND
ARCHAEOLOGICAL AREAS ACT 1979

37453

08 JUL 1997
YEARLY RUNNING No.
5229

Entry in the Schedule of Monuments

1996

Re: The Monument known as
Caledonian Canal, Loch Ness-Dochgarroch
Lock

in the Parish of Inverness and Bona and
County of Inverness

32

30

Search Sheet No: 37453

Solicitor
to the
Secretary of State
for Scotland
Victoria Quay
Edinburgh

MFA03563

6498

THE ANCIENT MONUMENTS AND ARCHAEOLOGICAL AREAS ACT 1979
ENTRY IN THE SCHEDULE OF MONUMENTS

The monument known as Caledonian Canal, Loch Ness-Dochgarroch Lock comprises that stretch of inland waterway known as the Caledonian Canal running north-eastward from Loch Ness as far as Dochgarroch Lock. The area proposed to be scheduled includes all the canal in water and the strip of ground extending up to 20m from the water on either side and containing the towpaths and embankments and any associated capstans, bollards, mooring hooks, mile posts, weirs and overflows, including the weir dividing Loch Dochfour from the River Ness. The scheduled area excludes Loch Dochfour itself, the surface of the A82(T) road running along part of the W side of Lochfour, all modern moorings, pontoons, slipways, walls and fences, power cables, lampposts and other street furniture. The monument, which lies in the Parish of Inverness and Bona and the County of Inverness as shown outlined in red on the Plan annexed and executed as relative hereto and which forms

[REDACTED]

is hereby included in the Schedule of Monuments appearing to the Secretary of State for Scotland to be of national importance compiled and maintained by him under section 1(1) of the Ancient Monuments and Archaeological Areas Act 1979.

Given under the Seal of the Secretary of State for Scotland.

[REDACTED]

Assistant Secretary

Date 30 August 1996

Historic Scotland
Longmore House
Salisbury Place
EDINBURGH
EH9 1SH

Register on behalf of the Secretary of State for Scotland in the Register of the County of Inverness.

[REDACTED]

Solicitor, Edinburgh, Agent

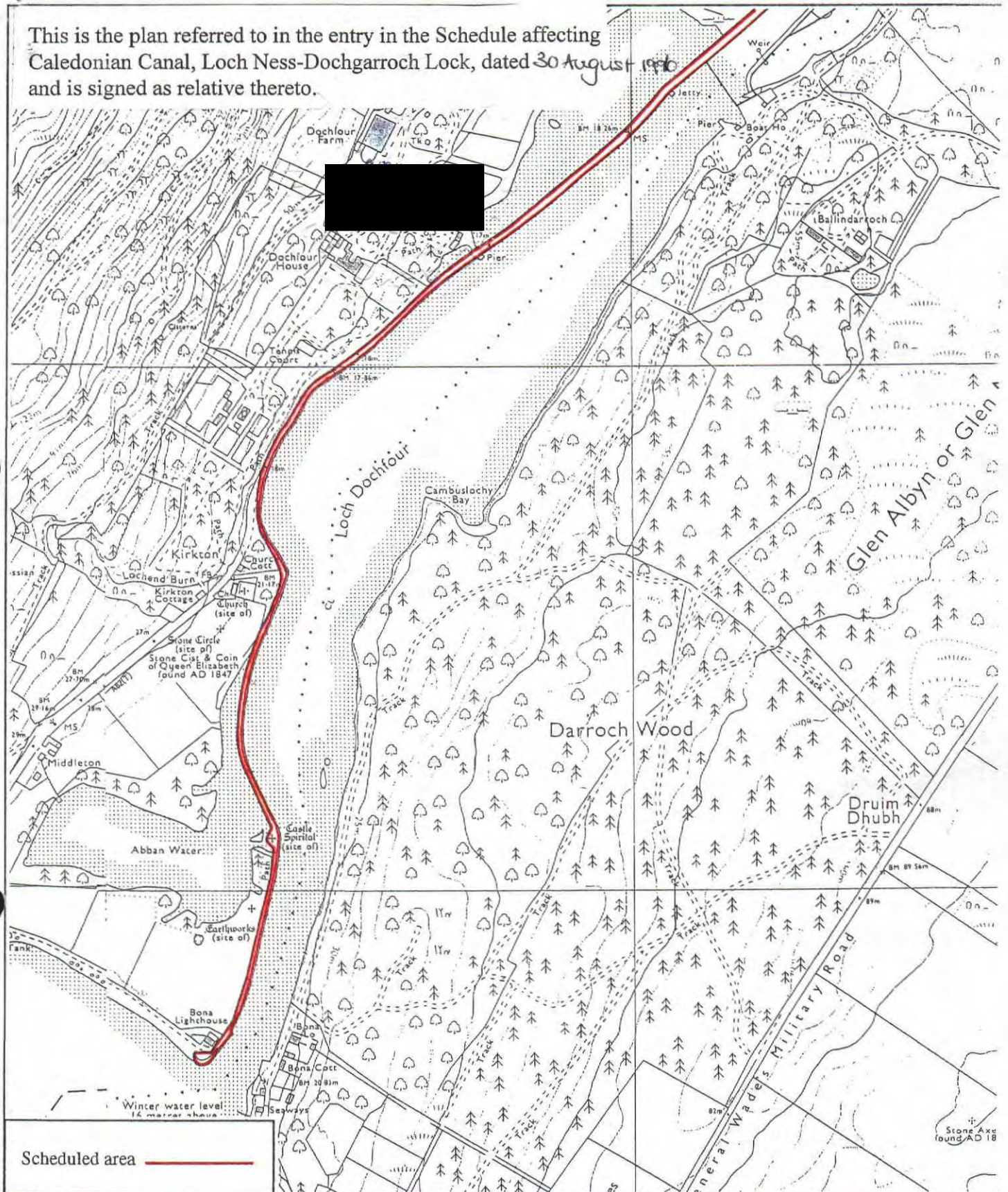
REGISTERS OF SCOTLAND
GENERAL REGISTER OF SASINES
COUNTY OF INVERNESS
FICHE 379 FRAME 40
PRESENTED & RECORDED ON - 8 JUL 1997

MFA03463

INV 97 379

40

This is the plan referred to in the entry in the Schedule affecting
Caledonian Canal, Loch Ness-Dochgarroch Lock, dated 30 August 1996
and is signed as relative thereto.



**Caledonian Canal, Loch Ness-
Dochgarroch Lock**

Map 1 of 2

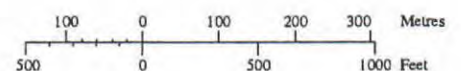
Inverness and Bona Parish



N

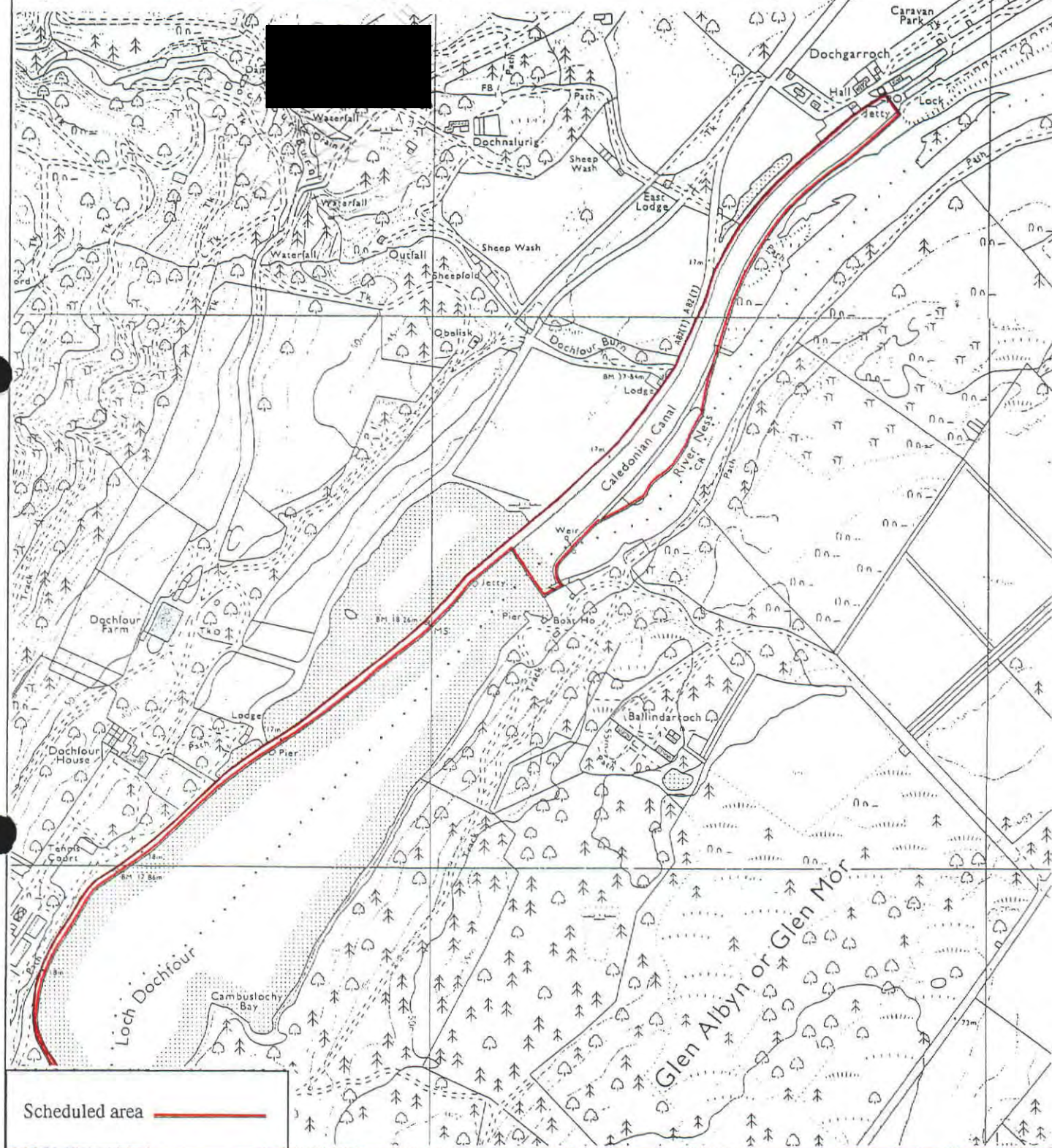
Sheet: NS63NW &
NS64SW

Scale 1:10,000



© Crown copyright reserved

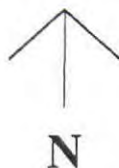
This is the plan referred to in the entry in the Schedule affecting Caledonian Canal, Loch Ness-Dochgarroch Lock, dated 30 August 1996 and is signed as relative thereto.



Caledonian Canal, Loch Ness-Dochgarroch Lock

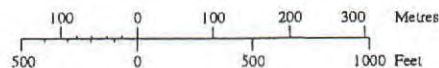
Map 2 of 2

Inverness and Bona Parish



Sheet: NS63NW & NS64SW

Scale 1:10,000



© Crown copyright reserved