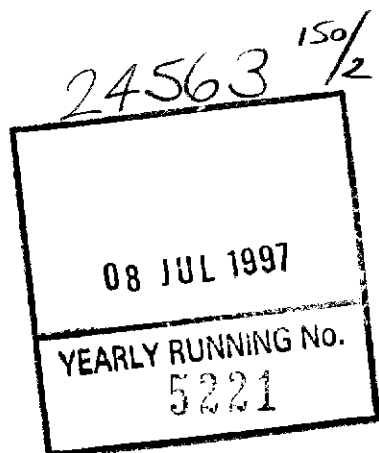


THE ANCIENT MONUMENTS AND  
ARCHAEOLOGICAL AREAS ACT 1979



Entry in the Schedule of Monuments

1996

24 22

Re: The Monument known as  
Caledonian Canal, Loch Oich to Cullochy  
Lock

in the Parish of Boleskine and Abertarff and  
County of Inverness

Search Sheet No: 24563


Solicitor  
to the  
Secretary of State  
for Scotland  
Victoria Quay  
Edinburgh

MFA03663

6495

THE ANCIENT MONUMENTS AND ARCHAEOLOGICAL AREAS ACT 1979  
ENTRY IN THE SCHEDULE OF MONUMENTS

The monument known as Caledonian Canal, Loch Oich to Cullochy Lock comprises that stretch of inland waterway known as the Caledonian Canal running from Loch Oich north-eastward to Cullochy Lock. The area to be scheduled includes all the canal in water and the strip of ground extending up to 20m from the water on either side and containing the towpaths and embankments and any associated capstans, bollards, mooring hooks, mile posts, weirs and overflows. The scheduled area also includes the abutments belonging to the former accommodation swing bridge to the north of the road swing bridge at Aberchalder, but excludes that road swing bridge as well as all modern moorings, pontoons, slipways, walls and fences, power cables, lampposts and other street furniture. The monument, which lies in the Parish of Boleskine and Abertarff and the County of Inverness as shown outlined in red on the Plan annexed and executed as relative hereto and which

 is hereby included in the Schedule of Monuments appearing to the Secretary of State for Scotland to be of national importance compiled and maintained by him under section 1(1) of the Ancient Monuments and Archaeological Areas Act 1979.


Given under the Seal of the Secretary of State for Scotland.

  
Assistant Secretary

Date 30 August 1996

Historic Scotland  
Longmore House  
Salisbury Place  
EDINBURGH  
EH9 1SH

Register on behalf of the Secretary of State for Scotland in the Register of the County of Inverness.

  
Solicitor, Edinburgh, Agent

REGISTERS OF SCOTLAND  
GENERAL REGISTER OF SASINES  
COUNTY OF INVERNESS  
FICHE 379 FRAME 19  
PRESENTED & RECORDED ON - 8 JUL 1997

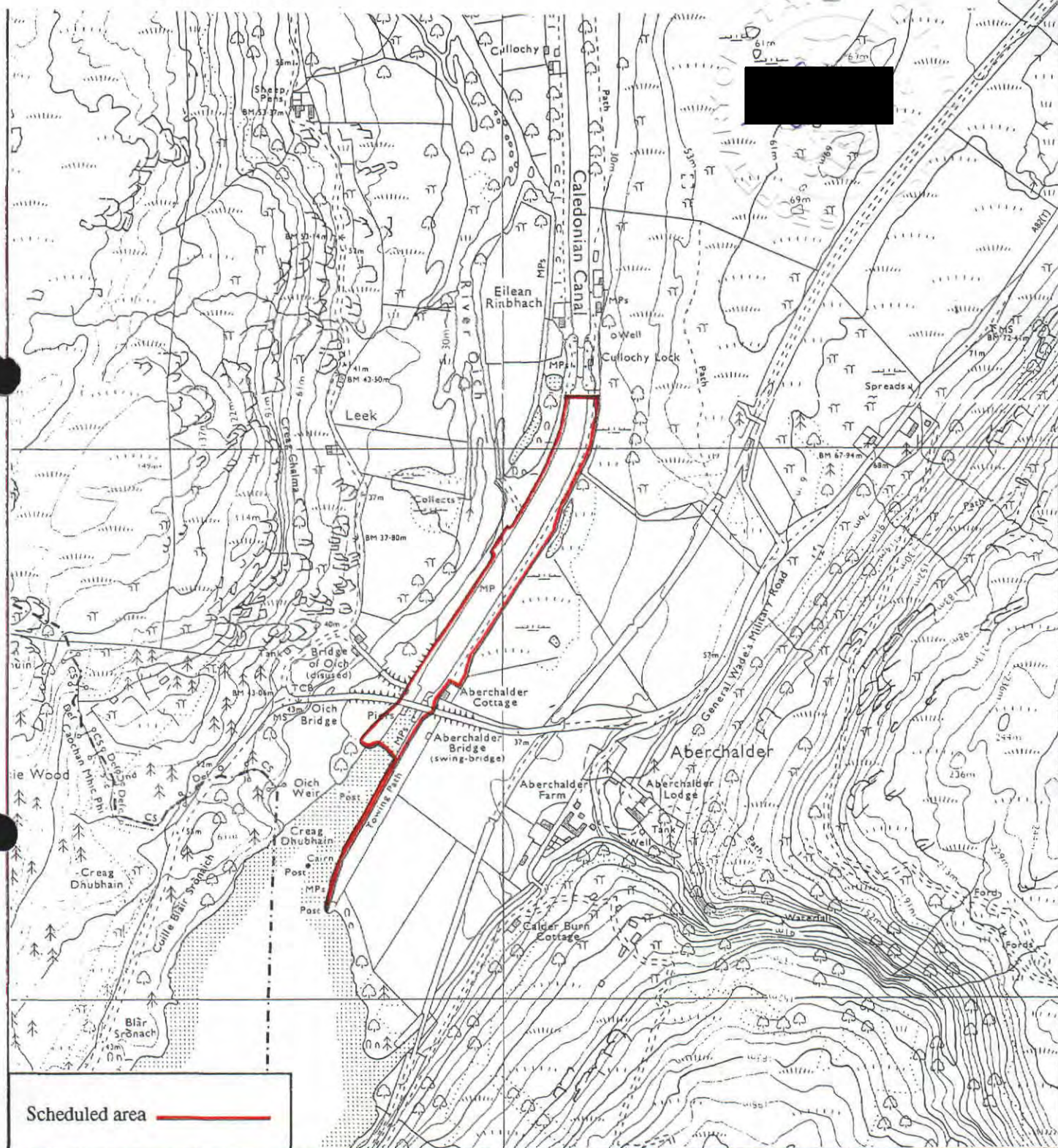
MFA03363

INV 97 379

19



This is the plan referred to in the entry in the Schedule affecting Caledonian Canal, Loch Oich to Cullochry Lock, dated 30 August 1996 and is signed as relative thereto.



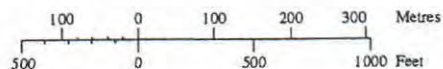
**Caledonian Canal, Loch Oich to Cullochry Lock**

**Boleskine and Abertarff Parish**



Sheet: NH30SW

**Scale 1:10,000**



© Crown copyright reserved

Prepared by HMSO Cartographic Centre J1752 January 1996

INV 97 379

20