

THE ANCIENT MONUMENTS AND
ARCHAEOLOGICAL AREAS ACT 1979

24563

08 JUL 1997
YEARLY RUNNING No. 5222

Entry in the Schedule of Monuments

1996

53
Re: The Monument known as
Caledonian Canal, Laggan Locks to Loch
Oich

in the Parish of Kilmonivaig and
County of Inverness

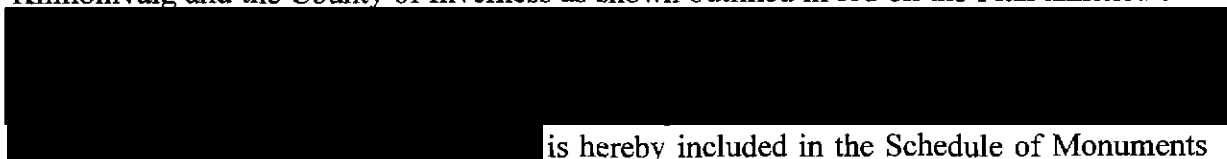
Search Sheet No: 24563

Solicitor
to the
Secretary of State
for Scotland
Victoria Quay
Edinburgh

MFA03163

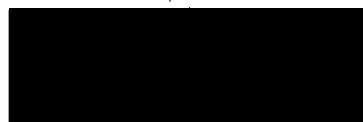
THE ANCIENT MONUMENTS AND ARCHAEOLOGICAL AREAS ACT 1979
ENTRY IN THE SCHEDULE OF MONUMENTS

The monument known as Caledonian Canal: Laggan Locks to Loch Oich comprises that stretch of inland waterway known as the Caledonian Canal running north-east from the Laggan Locks to Loch Oich. The area to be scheduled includes all the canal in water and the strip of ground extending up to 20m from the water on either side and containing the towpaths and embankments and any associated capstans, bollards, mooring hooks, mile posts, weirs and overflows. The scheduled area excludes the plate girder swing bridge at Laggan, all modern moorings, pontoons, slipways, walls and fences, power cables, lampposts and other street furniture. The monument, which lies in the Parish of Kilmonivaig and the County of Inverness as shown outlined in red on the Plan annexed and



is hereby included in the Schedule of Monuments appearing to the Secretary of State for Scotland to be of national importance compiled and maintained by him under section 1(1) of the Ancient Monuments and Archaeological Areas Act 1979.

Given under the Seal of the Secretary of State for Scotland.



Assistant Secretary

Date 30 August 1996

Historic Scotland
Longmore House
Salisbury Place
EDINBURGH
EH9 1SH

Register on behalf of the Secretary of State for Scotland in the Register of the County of Inverness.



Solicitor, Edinburgh, Agent

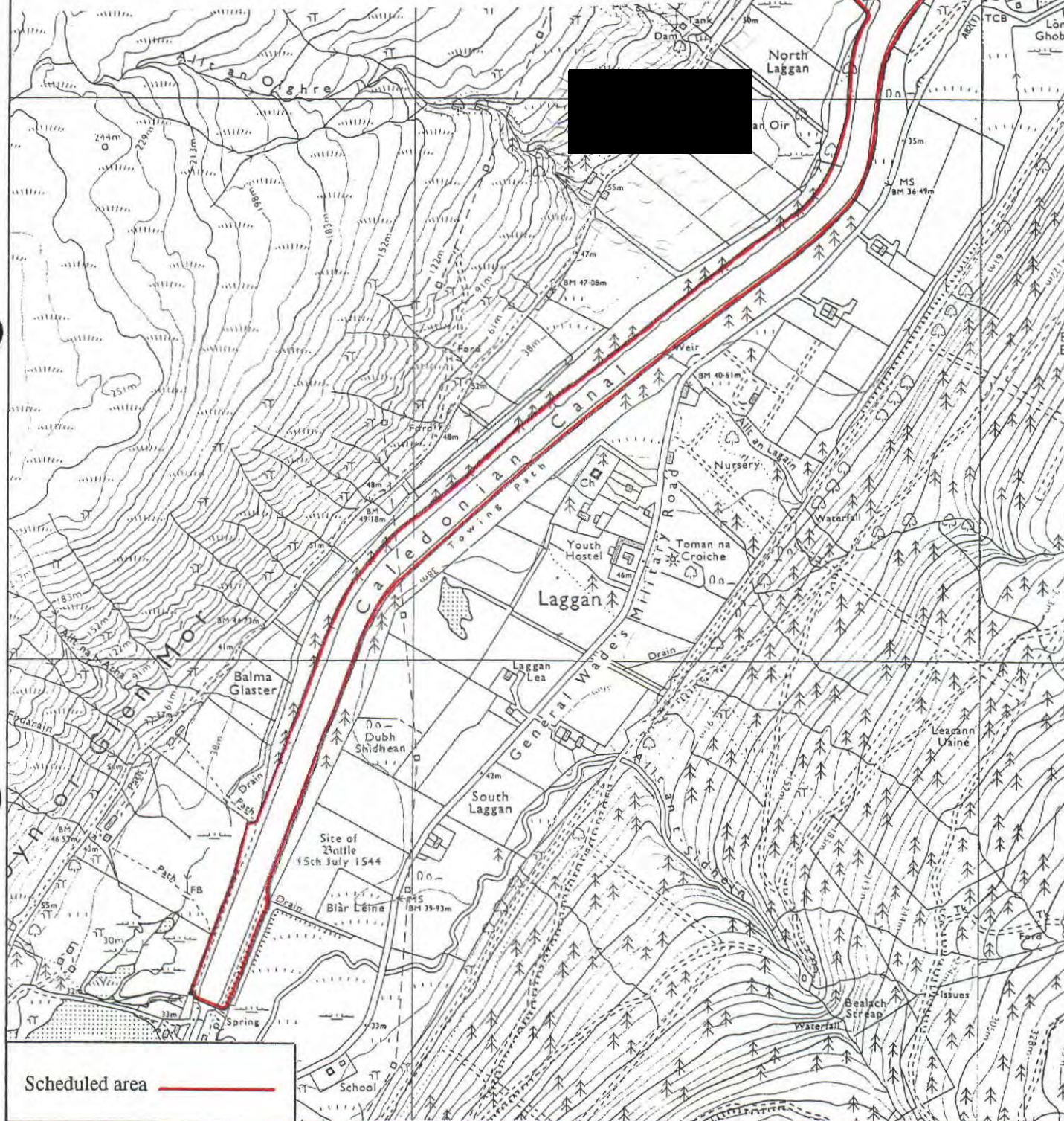
MFA03463

REGISTERS OF SCOTLAND
GENERAL REGISTER OF SASINES
COUNTY OF INVERNESS

FICHE 379 FRAME 2
PRESENTED & RECORDED ON 8 JUL 1997

INV 97 379

This is the plan referred to in the entry in the Schedule affecting Caledonian Canal, Laggan Locks to Loch Oich, dated 30 August 1994 and is signed as relative thereto.



Scheduled area

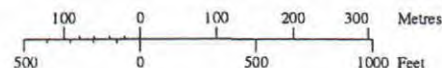
**Caledonian Canal, Laggan Locks to
Loch Oich**

Kilmonivaig Parish



Sheets: NN29NE
& NN39NW

Scale 1:10,000



© Crown copyright reserved