

INV

THE ANCIENT MONUMENTS AND
ARCHAEOLOGICAL AREAS ACT 1979

Entry in the Schedule of Monuments

1996

Re: The Monument known as
Harris Lodge, cairn 550m ESE of
in the Parish of Small Isles (Rum) and
County of Inverness

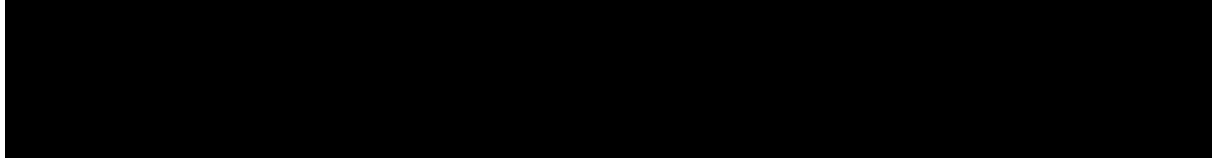
Search Sheet No: 8041

Solicitor
to the
Secretary of State
for Scotland
Victoria Quay
Edinburgh


MFA02061

THE ANCIENT MONUMENTS AND ARCHAEOLOGICAL AREAS ACT 1979
ENTRY IN THE SCHEDULE OF MONUMENTS

The monument known as Harris Lodge, cairn 550m ESE of comprises a small oval cairn located on a raised beach. The area to be scheduled is a circle measuring 40m in diameter which is centred on the cairn and includes the cairn and an area around it in which traces of activities associated with its construction and use may survive. The monument, which lies in the Parish of Small Isles (Rum) and the County of Inverness as shown outlined in red on the Plan annexed and executed as relative hereto and which forms part of the subjects

 is hereby included in the Schedule of Monuments appearing to the Secretary of State for Scotland to be of national importance compiled and maintained by him under section 1(1) of the Ancient Monuments and Archaeological Areas Act 1979.

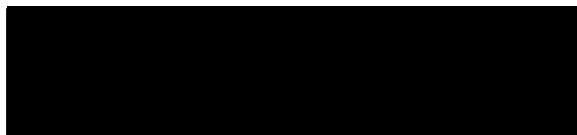
Given under the Seal of the Secretary of State for Scotland.


Assistant Secretary

Date 5 March 1996

Historic Scotland
Longmore House
Salisbury Place
EDINBURGH
EH9 1SH

Register on behalf of the Secretary of State for Scotland in the Register of the County of Inverness.


Solicitor, Edinburgh, Agent

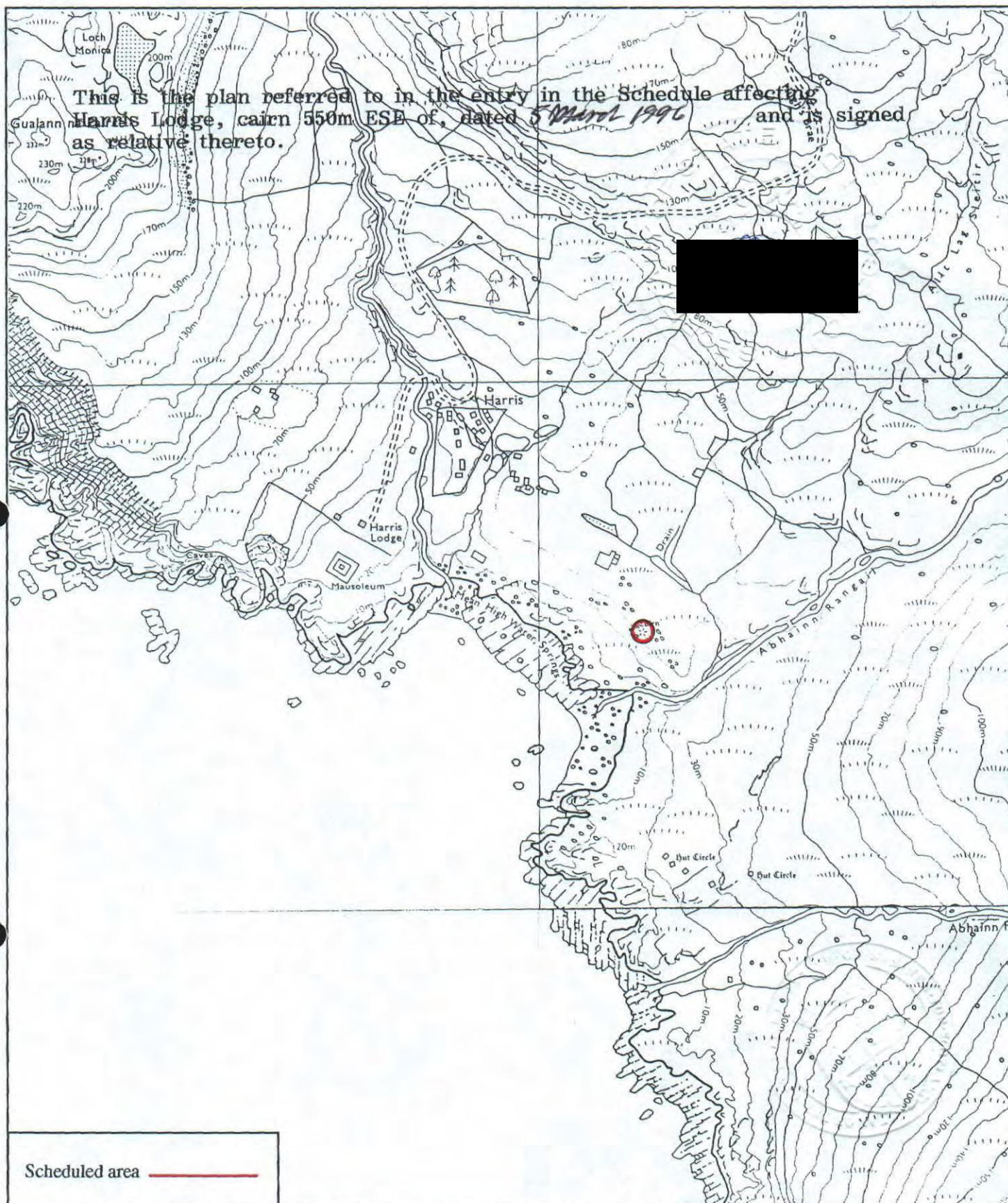
1000 262

MFA01961

REGISTERS OF SCOTLAND
GENERAL REGISTER OF SASINES
COUNTY OF INVERNESS
FICHE 295 FRAME 16
PRESENTED & RECORDED ON

13 JUN 1996

16



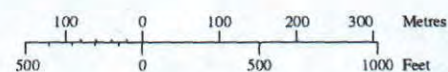
Harris Lodge, cairn 550m ESE of

Small Isles (Rum) Parish



Sheet: NM39NW

Scale 1:10,000



© Crown copyright reserved