

31 MAR 1993
No. 1207
FREC 722-00

THE ANCIENT MONUMENTS AND
ARCHAEOLOGICAL AREAS ACT 1979

Entry in the Schedule of Monuments

1993

Re: The Monument known as
Gamelshiel Castle

in the Parish of Stenton and
County of East Lothian

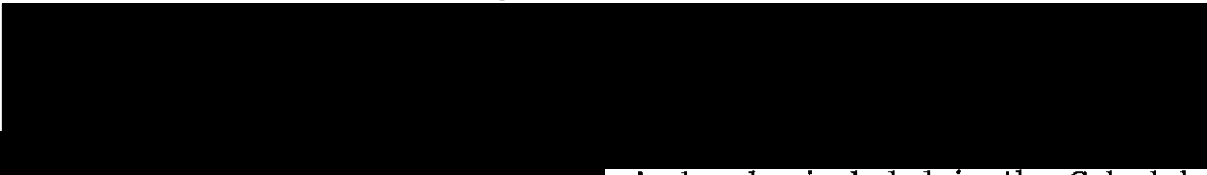
File Ref:

Solicitor
to the
Secretary of State
for Scotland
New St Andrew's House
Edinburgh

FAB 7333

THE ANCIENT MONUMENTS AND ARCHAEOLOGICAL AREAS ACT 1979
ENTRY IN THE SCHEDULE OF MONUMENTS

The monument known as Gamelshiel Castle comprises the ruins of Gamelshiel Castle, a small towerhouse of sixteenth century date. The area to be scheduled is triangular and measures a maximum of 50m N-S by 55m E-W, to include the castle and a surrounding portion of land where buried features relating to the castle are likely to survive. The N boundary is defined by the Hall Burn, the E limit is defined by a track which is excluded from the scheduled area. The monument, which lies in the Parish of Stenton and the County of East Lothian as shown outlined in red on the Plan annexed and executed as relative hereto and which



, is hereby included in the Schedule of Monuments appearing to the Secretary of State for Scotland to be of national importance compiled and maintained by him under section 1(1) of the Ancient Monuments and Archaeological Areas Act 1979.

Given under the Seal of the Secretary of State for Scotland.

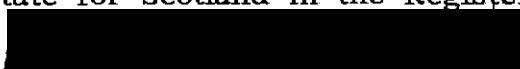


Assistant Secretary
Date 17 FEBRUARY 1993

Historic Scotland
20 Brandon Street
Edinburgh
EH3 5RA

Register on behalf of the Secretary of State for Scotland in the Register of the County of East Lothian.

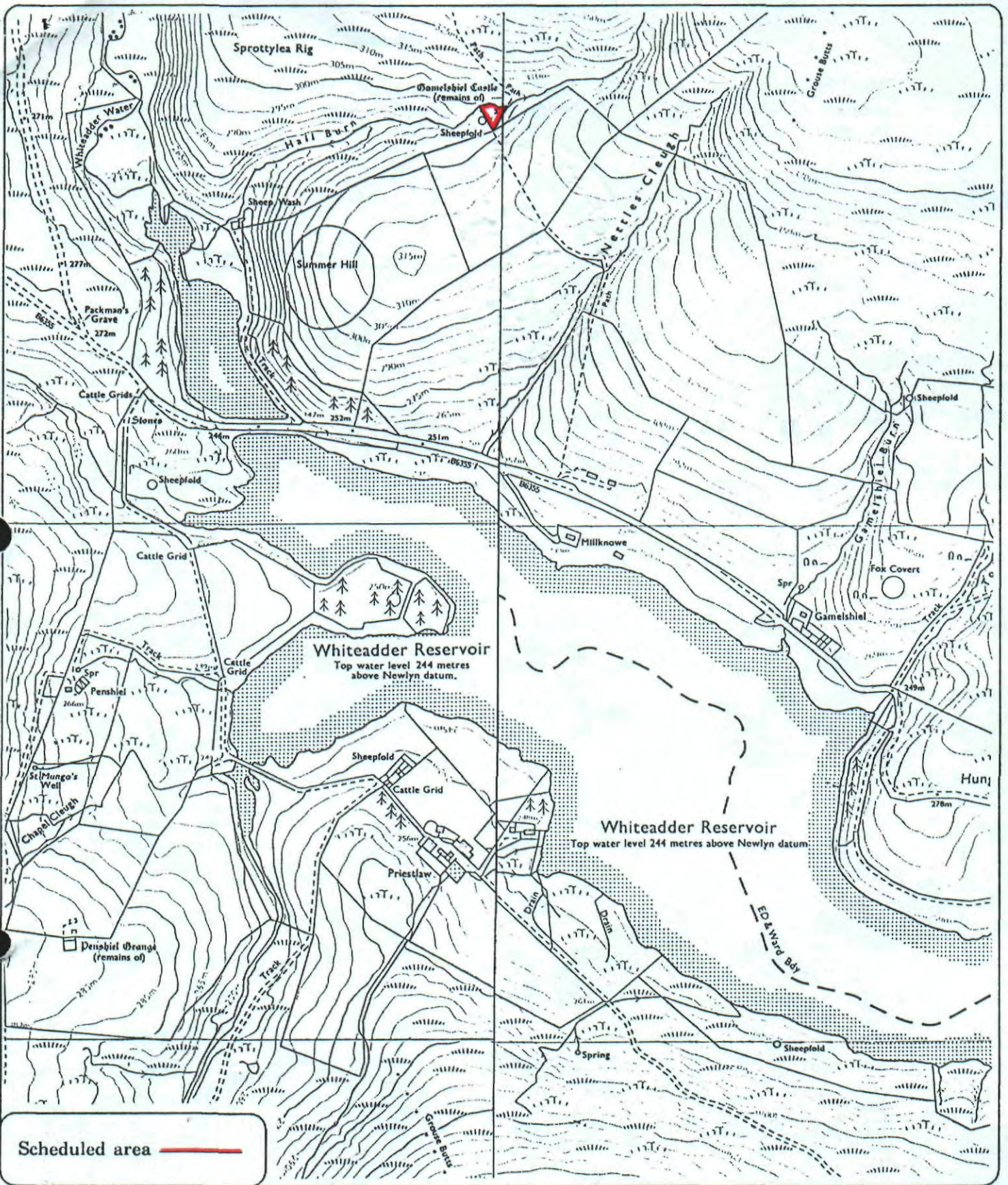
Solicitor, Edinburgh, Agent



EL 93 00

9

REGISTERS OF SCOTLAND
GENERAL REGISTER OF SASINES
COUNTY OF EAST LOTHIAN
Fiche.....66.... Frame.....9.....
Presented and Recorded on 31 MAR 1993



Scheduled area

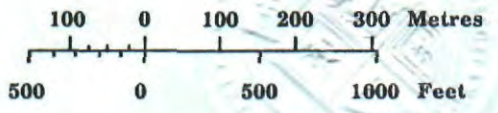
Gamelshiel Castle

Stenton Parish



Sheet : NT 66 SW

Scale : 1/10,000



© Crown copyright reserved