

THE ANCIENT MONUMENTS AND  
ARCHAEOLOGICAL AREAS ACT 1979

Entry in the Schedule of Monuments

1991

Re: The Monument known as  
Loch Tigh na Creige, sheepfold  
300m NW of

in the Parish of Lairg and  
County of Sutherland

File Ref:

Solicitor  
to the  
Secretary of State  
for Scotland  
New St Andrew's House  
Edinburgh

7333

THE ANCIENT MONUMENTS AND ARCHAEOLOGICAL AREAS ACT 1979  
ENTRY IN THE SCHEDULE OF MONUMENTS

The monument known as Loch Tigh na Creige, sheepfold 300m NW of comprises a well preserved sheepfold with associated enclosures. The low drystone wall of the sheepfold, which is overgrown with turf and heather, encloses an area about 12m in diameter and has a SE entrance. Walls run off from the sheepfold to S and N and may form small subsidiary sheepfolds, lambing pens or shepherds' huts. The area to be scheduled measures 30m N-S and 20m E-W, to cover the sheepfold and the subsidiary enclosures to N and S. The monument, which lies in the Parish of Lairg and the County of Sutherland as shown outlined in red on the Plan annexed and executed as relative hereto and which forms part of

[REDACTED], is hereby included in the Schedule of Monuments appearing to the Secretary of State for Scotland to be of national importance compiled and maintained by him under section 1(1) of the Ancient Monuments and Archaeological Areas Act 1979.

Given under the Seal of the Secretary of State for Scotland.

[REDACTED]  
Assistant Secretary  
Date 21 OCTOBER 1991

Historic Scotland  
20 Brandon Street  
Edinburgh  
EH3 5RA

Register on behalf of the Secretary of State for Scotland in the Register of the County of Sutherland.

[REDACTED]  
Solicitor, Edinburgh, Agent

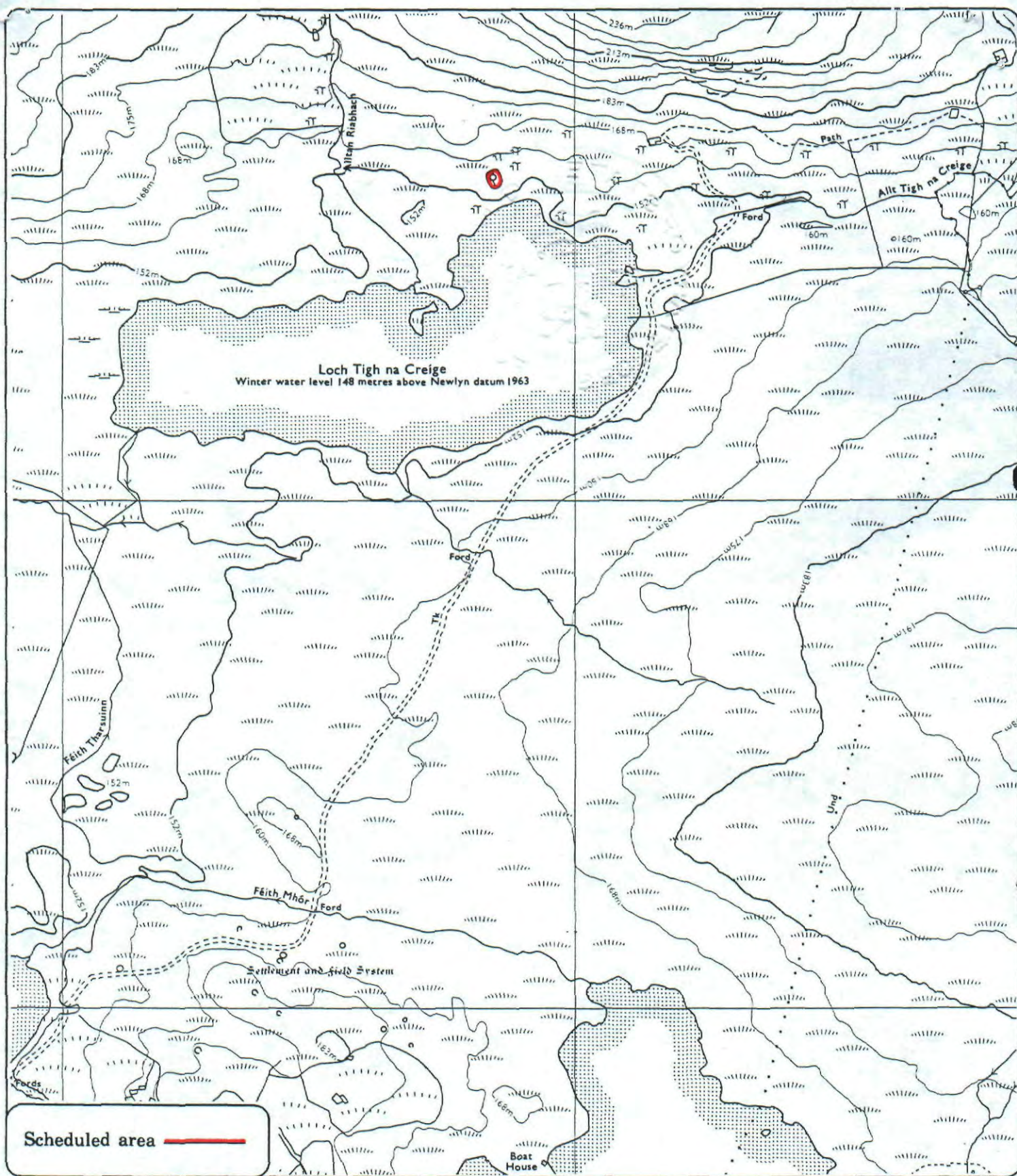
REGISTERS OF SCOTLAND  
GENERAL REGISTER OF SASINES  
COUNTY OF SUTHERLAND

Fiche.....38..... Frame.....7.....  
Presented and Recorded on - 3 JUL 1992

C2102021.051

BU 92 38





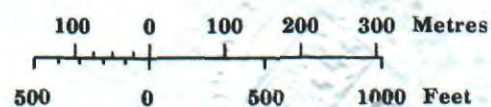
Loch Tigh na Creige,  
sheepfold 300m NW of

Lairg Parish



Sheet : NC60NW

Scale : 1/10,000



© Crown copyright reserved