

483

Ch
Am

28 JUN 1988
- 6 JUN 1988
No
CF 11.00
CUT

THE ANCIENT MONUMENTS AND
ARCHAEOLOGICAL AREAS ACT 1979

Entry in the Schedule of Monuments

1988

Re: The Monument known as
Bille Castle

in the Parish of Bunkle and Preston
and County of Berwick

A.S

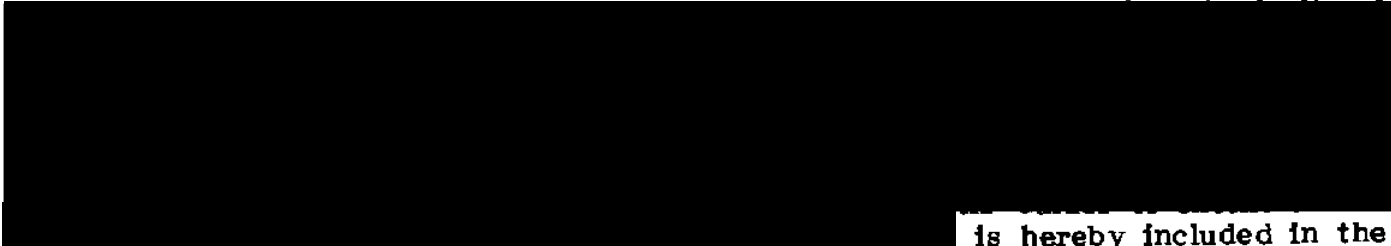
File Ref:

Solicitor
to the
Secretary of State
for Scotland
New St Andrew's House
Edinburgh


FAS 7233

THE ANCIENT MONUMENTS AND ARCHAEOLOGICAL AREAS ACT 1979
ENTRY IN THE SCHEDULE OF MONUMENTS

The monument known as Bille Castle being a castle and domestic structures of the medieval period comprises the remains of the keep, other stone fortifications, earthwork fortifications, three domestic enclosures, the remains of two rectangular buildings, a kiln, and all within an area to be scheduled measuring 310m E-W by 100m transversely. The monument, which lies in the Parish of Bunkle and Preston and the County of Berwick as shown outlined in red on the Plan annexed and executed as relative hereto and which forms part of the subjects described in the

 is hereby included in the Schedule of Monuments appearing to the Secretary of State for Scotland to be of national importance compiled and maintained by him under section 1(1) of the Ancient Monuments and Archaeological Areas Act 1979.

Given under the Seal of the Secretary of State for Scotland.


Assistant Secretary
Date 28 March 1988

Scottish Development Department
Historic Buildings and Monuments
20 Brandon Street
Edinburgh
EH3 5RA

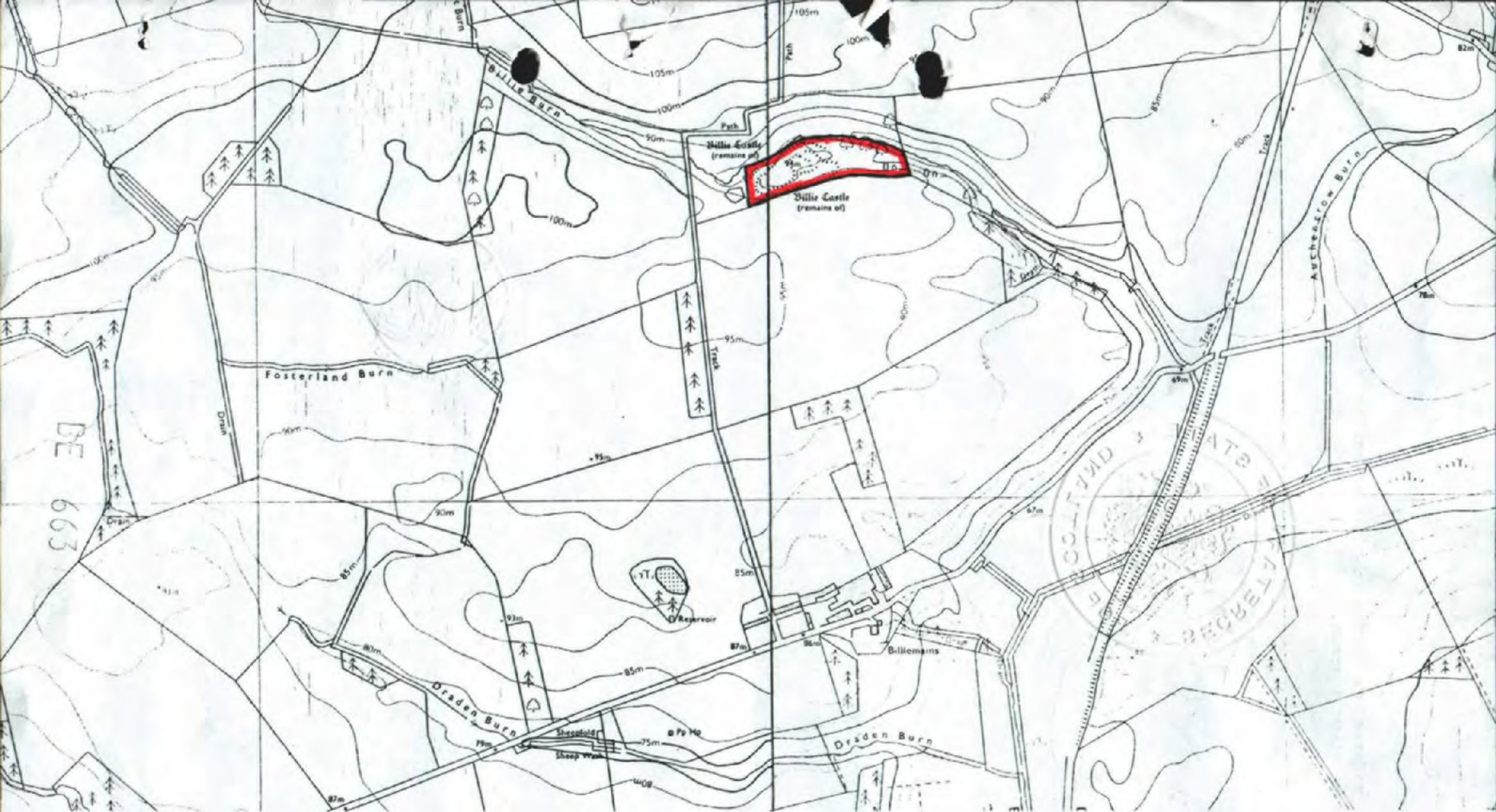
Register on behalf of the Secretary of State for Scotland in the Register of the County of Berwick.


Solicitor, Edinburgh, Agent

EE 663

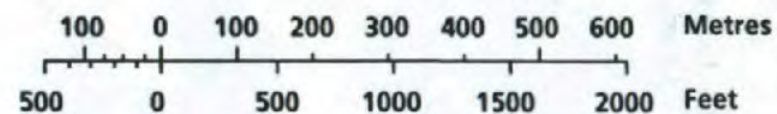
REGISTERS OF SCOTLAND.
GENERAL REGISTER OF SASINES.

COUNTY OF BERWICK.
Book 663 Folio 70
Presented and Recorded on 6 JUN 1988



Billie Castle

Scale : 1/10 000



Bunkle and Preston Parish

Sheet NT 85 NE

© Crown copyright reserved