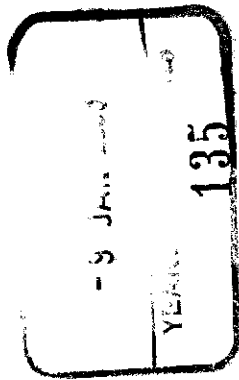


Ayr

THE ANCIENT MONUMENTS AND
ARCHAEOLOGICAL AREAS ACT 1979



Entry in the Schedule of Monuments

36
~~37~~

2002

Re: The Monument known as
Haylie House, chambered cairn

in the Parish of Largs and
County of Ayr

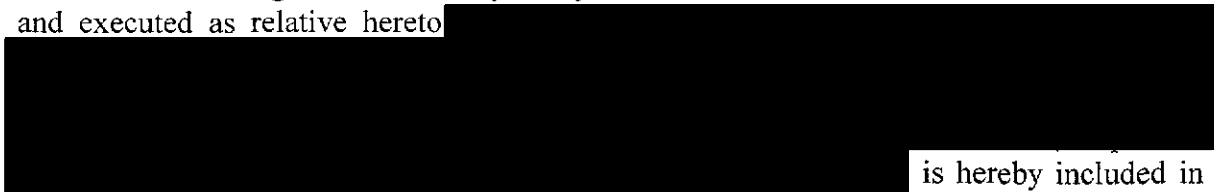
530445645101

Search Sheet No: 84490

Historic Scotland
Longmore House
Salisbury Place
Edinburgh

THE ANCIENT MONUMENTS AND ARCHAEOLOGICAL AREAS ACT 1979
ENTRY IN THE SCHEDULE OF MONUMENTS

The monument known as Haylie House, chambered cairn comprises the remains of a chambered cairn, dating from the Neolithic period. The area to be scheduled is irregular and measures 25m maximum from E to W by 17m transversely. The monument, which lies in the Parish of Largs and the County of Ayr as shown outlined in red on the Plan annexed and executed as relative hereto



is hereby included in the Schedule of Monuments appearing to the Scottish Ministers to be of national importance compiled and maintained by them under section 1(1) of the Ancient Monuments and Archaeological Areas Act 1979.

Subscribed by Sheenagh Adams, Director of Heritage Policy with Historic Scotland, being an officer of the Scottish Ministers at Edinburgh on the 20th day of November Two thousand and two, before this witness Lesley Macdonald, of Longmore House, Salisbury Place, Edinburgh.



Director of Heritage Policy

Register on behalf of the Scottish Ministers in the Register of the County of Ayr.



An Officer of the Scottish Ministers

MFA05690.092

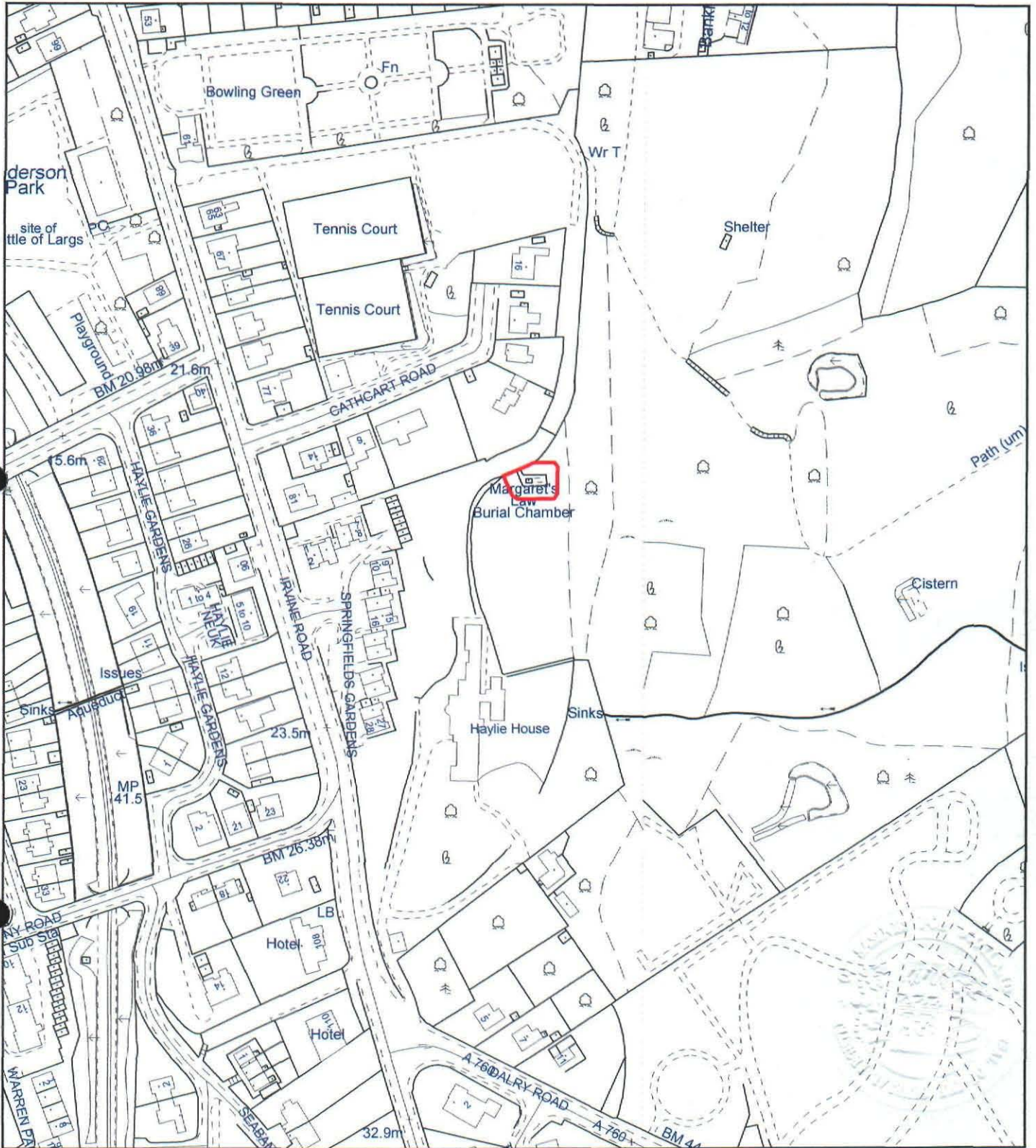
AYR 03 6

REGISTERS OF SCOTLAND
GENERAL REGISTER OF SASINES
COUNTY AYR
FICHE 6 FRAME 24
PRESENTED AND RECORDED ON

- 9 JAN 2003

24

This is the plan referred to in the entry in the Schedule affecting Haylie House, chambered cairn, dated: 20/1/02 and is signed as relative thereto.



<p>Haylie House, chambered cairn</p> <p>Largs Parish</p> <p>[REDACTED]</p> <p>Scheduled Area </p>	<p>N</p>  <p>MapSheet: NS25NW</p>	<p>Scale 1:2,500</p>  <p>This map is reproduced from the OS map by Historic Scotland with the permission of The Controller of Her Majesty's Stationery Office, © Crown copyright. Unauthorised reproduction infringes Crown Copyright and may lead to prosecution or civil proceedings. Licence No. GD 03135G0014.</p>
---	--	--

25