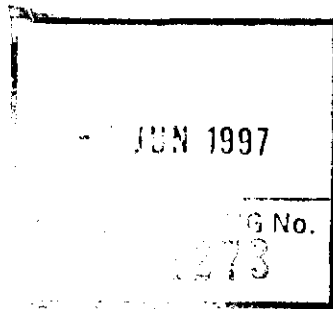


Am

THE ANCIENT MONUMENTS AND
ARCHAEOLOGICAL AREAS ACT 1979

Amended Entry in the Schedule of
Monuments



1997

Re: The Monument known as
Dun Borrafiach, broch, Waternish

in the Parish of Duirinish and
County of Inverness

58

Search Sheet No:

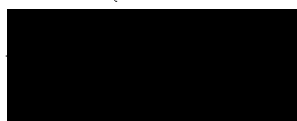
Solicitor
to the Secretary of State
for Scotland
Victoria Quay
Edinburgh

MFA05868

THE ANCIENT MONUMENTS AND ARCHAEOLOGICAL AREAS ACT 1979
AMENDED ENTRY IN THE SCHEDULE OF MONUMENTS

The entry in the Schedule of monuments appearing to the Secretary of State for Scotland to be of national importance compiled and maintained by him under Section 1(1) of the above Act in respect of the monument known as Dun Borrafiach, broch, Waternish, dated 13 September 1960 and recorded in the Division of the General Register of Sasines for the County of Inverness on 30 September 1960 is hereby in accordance with the provisions of section 1(5) of the above Act amended to describe the area of the scheduled monument as being a circle measuring 40m in diameter centred on the broch as shown delineated in red on the plan annexed and executed as relative hereto.

Given under the Seal of the Secretary of State for Scotland

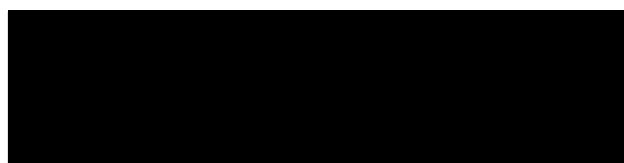


Assistant Secretary

Date 28 February 1997

Historic Scotland
Longmore House
Salisbury Place
EDINBURGH
EH9 1SH

Register on behalf of the Secretary of State for Scotland in the Register of the County of Inverness.



Solicitor, Edinburgh, Agent

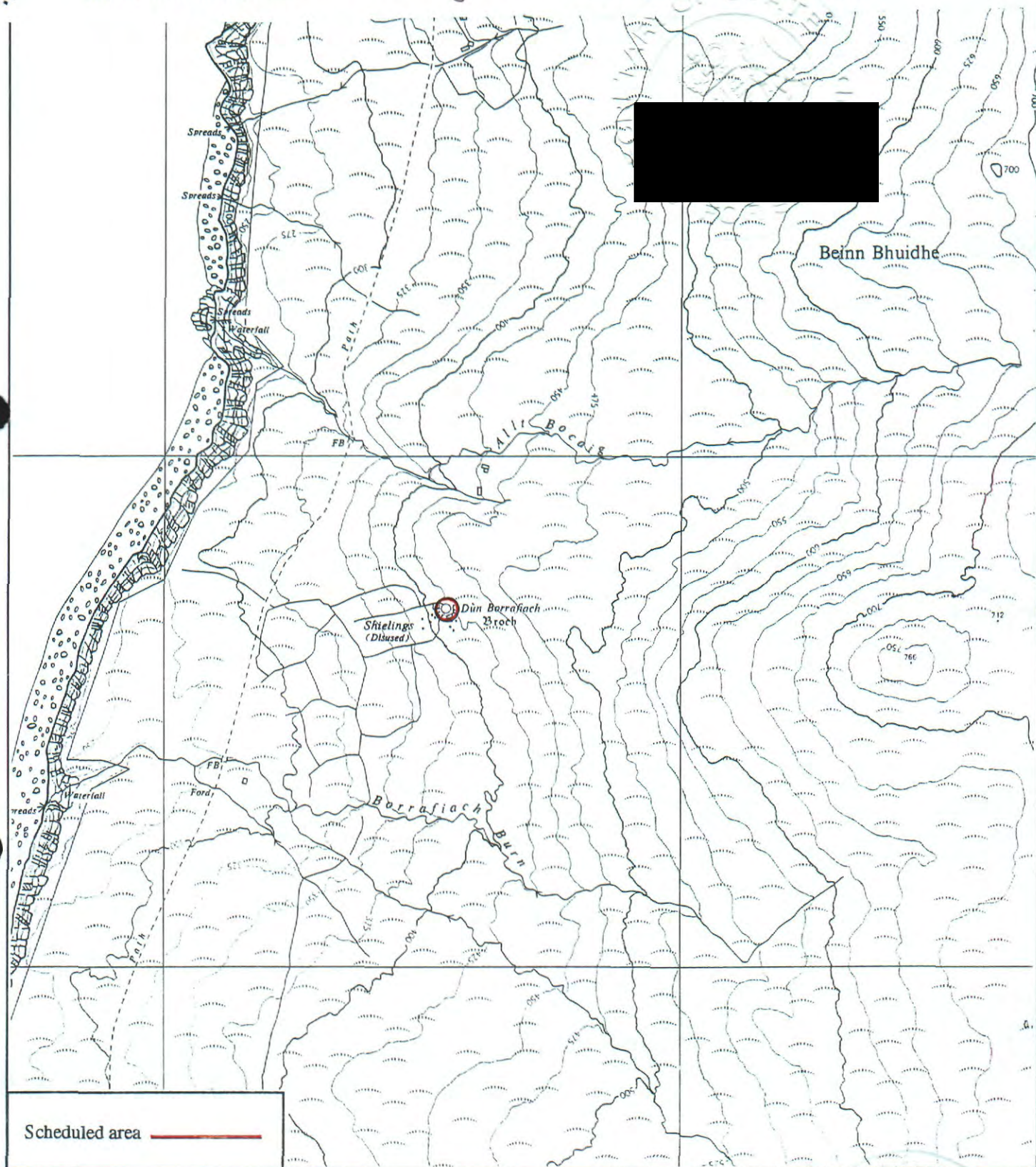
INV 97

312

MFA05768

REGISTERS OF SCOTLAND
GENERAL REGISTER OF SASINES
COUNTY OF INVERNESS
FICHE 312 FRAME 15
PRESENTED & RECORDED ON - 4 JUN 1997

This is the plan referred to in the amended entry in the Schedule affecting Dun Borrafiach, broch, Waternish, dated 28 February 1997 and is signed as relative thereto.



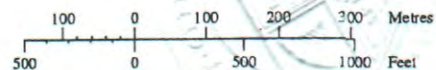
Dun Borrafiach, broch, Waternish

Duirinish Parish



Sheet: NG26SW

Scale 1:10,560



© Crown copyright reserved

INV 97 312